

ONE DOOR QUADRANT



INSTALLATION INSTRUCTION

8MO 09

IMPORTANT

Please familiarise yourself with the fitting instructions before commencing fitting.

1. Check that you have the tools required.
2. Check that the installation site is compatible with size of door supplied.
3. Check all the enclosure components.
4. Check that the installation kit is complete.

DO NOT attempt to install the product unless you can tick ALL 4 boxes as satisfactory.

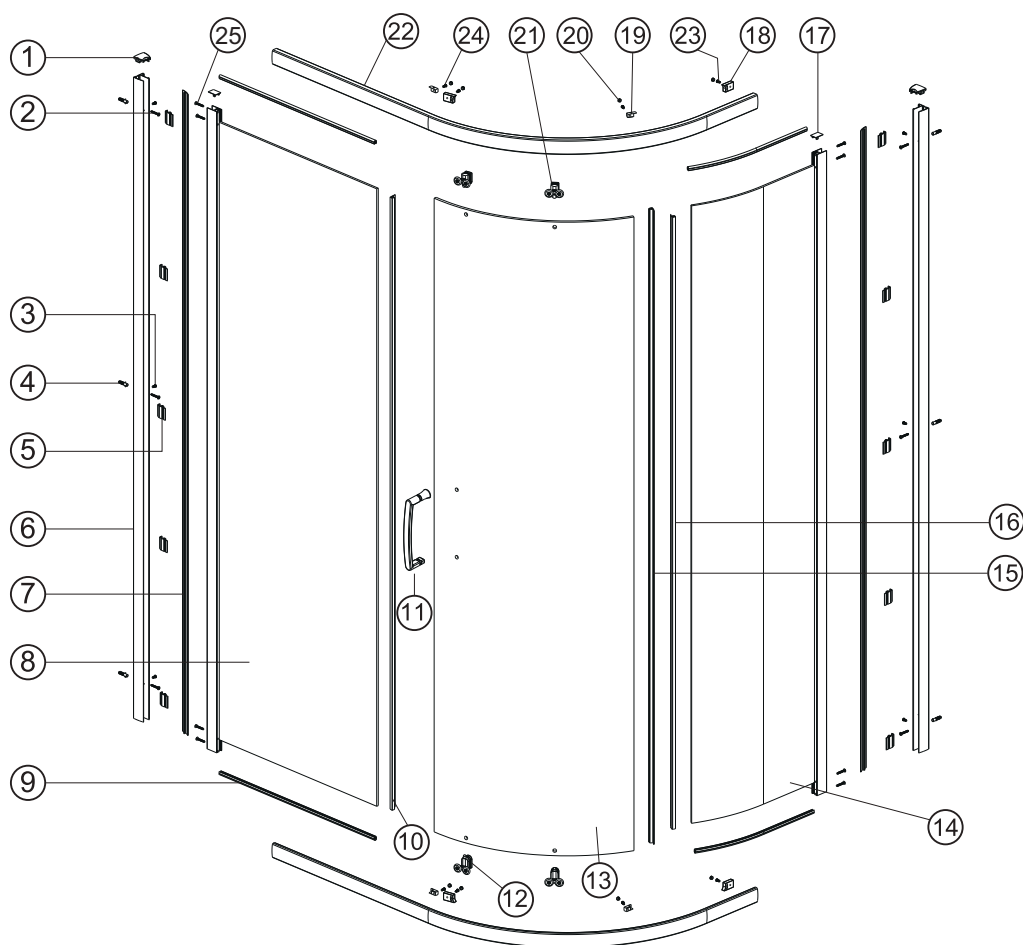
The wall plugs supplied with the installation kit are for use in solid walls. Hollow or 'stud-partition' walls will require alternative fixings. Please consult a hardware supplier for the correct type.

It may also be necessary to consult your tiling supplier about the correct method for drilling your tiles.

USE SAFETY EYEWEAR WHEN DRILLING

Any parts missing or damaged must be reported to your supplier within 5 days of purchase. Inspect shower enclosure before fitting. No claims will be acceptable after product has been installed.

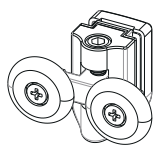
COMPONENTS AND BOX CONTENTS



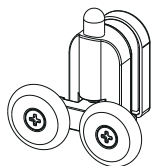
No.	Description	Qty	Part No.	No.	Description	Qty	Part No.
1	Cover cap for wall profile L/R	2	B08060 L/R	14	Curved fixed panel	1	D
2	Screw ST4x30	6	A2403001	15	Upright water seal for moving panel	1	B08080
3	Flat head screw ST4x12	6	A2401201	16	Upright water seal for curved fixed pane	1	B08117
4	Ø6x30 wall plug	6	BB6304	17	Cover cap for upright profile	2	B08062
5	Cover strip clip	10	B08054	18	Roller stop L/R	4	B08065 L/R
6	Wall profile	2	B08021	19	Glass clip L/R	4	B08120/B08121
7	Cover strip	2	B08026	20	Glass clip cover cap	4	B08069
8	Flat fixed panel	1	A	21	Top double roller	2	B08074
9	Fixed panel top & bottom seal	4	B08119	22	Top and bottom rail	2	E
10	Upright seal for flat fixed panel	1	B08116	23	Roller stop screw ST4x10	4	B08089
11	Handle	1	B	24	Glass clip screw ST4x10	4	B08089
12	Bottom double roller	2	B08075	25	Screw ST4x40	8	B08129
13	Moving panel	1	C				

Note: Further part details for fixing kit available on page 2

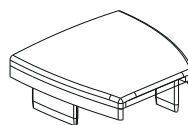
FIXING KIT COMPONENTS, TOOLS REQUIRED



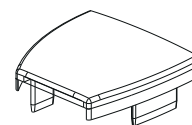
B08074
x2



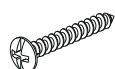
B08075
x2



B08060L
x1



B08060R
x1



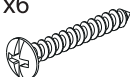
A2403001
x6



A2401201
x6



BB6304
x6



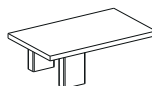
B08129
x8



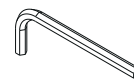
B08092
x1



B08069
x4



B08062
x2



B08068
x1

Handle as supplied in carton may be different than shown

Tools Required

- 6mm masonry drill bit
- Spanner
- Power drill
- Quality Silicone
- Pencil
- Tape Measure
- #2 Philips Head screw driver
- Spirit level with horizontal and vertical level indicators

IMPORTANT – Installation site

1. Ensure the top surface of the shower tray on which the enclosure will be installed is level in every direction.
2. The tiles or other wall finishing should be effectively sealed at the tray edges.
3. Tiles should extend at least to the corners of the tray and a minimum of 2.0 metres from the top of the tray.

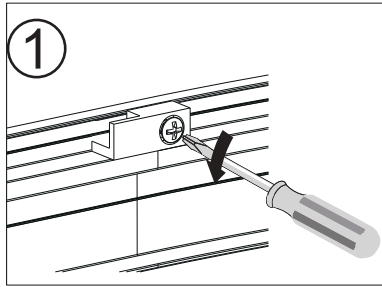
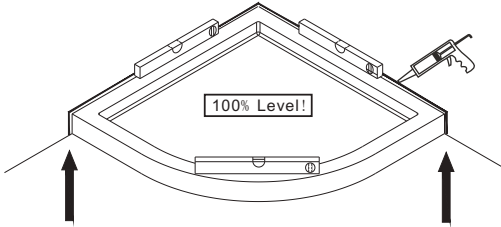
FITTING FRAME

PROCEDURE

TRAY MUST BE 100% LEVEL IN ALL DIRECTIONS.

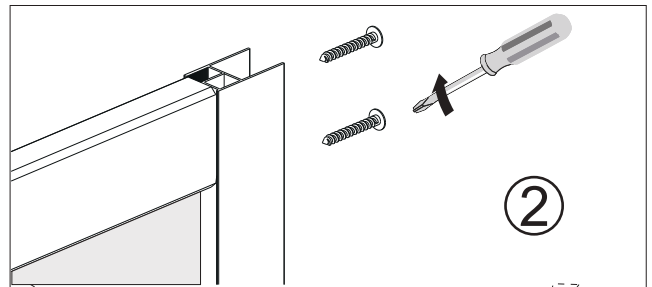
Ensure the shower tray is level in all directions and is properly sealed to the wall. The wall must be tiled down to the top edge of the tray. Do not angle out bottom tile.

TRAY MUST BE SEALED FULLY AROUND WHERE THE TRAY MEETS THE WALL.



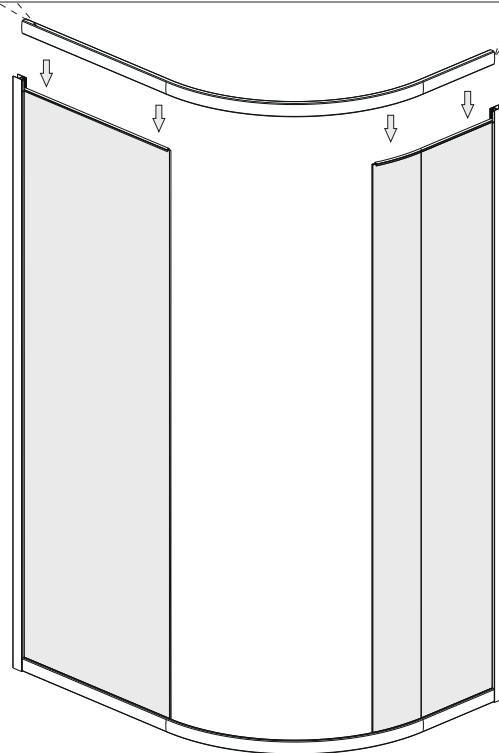
Step 1.

Loosen fixed glass panel clip.
Do not remove the screw.



Step 2.

Fix the two fixed panels and upright profiles to the top bottom rail, using **B08129** screw.



Step 3.

Put a dab of silicone in the corner between glass panel and fixed clip on the bottom when sliding the clip under the glass and back into position.
Ensure bottom seal is present on glass, remove small corner protector/seal if present.

