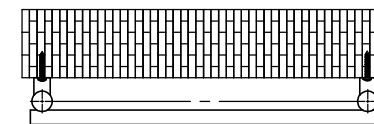
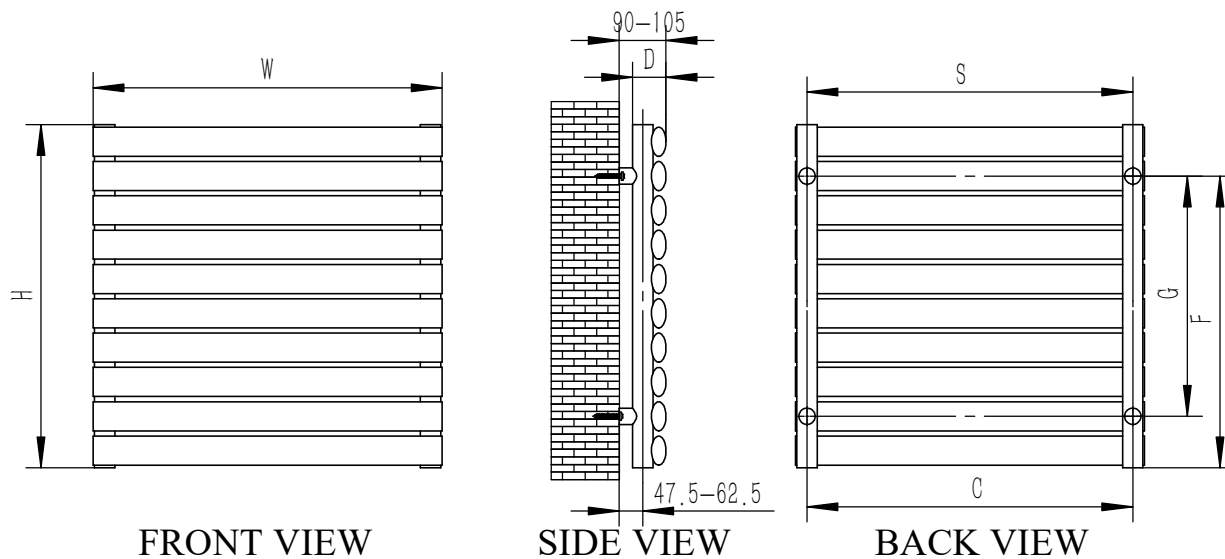


ARTENA



TOP VIEW

SUPPLIED INSTALLATION ACCESSORIES



ALLEN KEY 1PCS



SMALL SCREW 4PCS



WALL PLUG 4PCS



POLOSHING CLOTH (Brush)1PCS



AIR VENT 1PCS



SCREW 4PCS

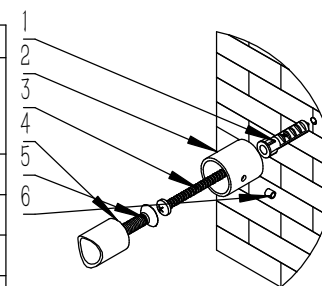


BACKET 4PCS



WALL BACKET 4PCS

- Vertical Mounting
- Optional 304 QUALITY STAINLESS STEEL RADIATOR (RNS-AT906P/B:ARTENA RADIATOR)
- POLISHED
- MAX Operational Pressure:10Bar
- Inlet/Outlet:1/2"Female Pipe Thread
- All Dimensions are in mm



Product Name	Product Cude	Height	Width	Thick Ness	Plumbing Axes Center to Center	Hanger Axes Horizontal	Hanger To Bottom of the Product	Hanger Axes Vertical	Water Volume	Empty Weight	Thermal Output
		H mm	W mm	D mm	C mm	S mm	F mm	G mm	- L	- kg	Wat-Btu/hr($\Delta 50^\circ$)
RNS-AT904P/B	ARTENA/S-904 P+B	590	400	58	355	270	501.5	472	4.5	4.5	292-996
RNS-AT906P/B	ARTENA/S-906 P+B	590	600	58	555	470	501.5	472	6.2	6.2	407-1388
RNS-AT908P/B	ARTENA/S-908 P+B	590	800	58	755	670	501.5	472	7.9	7.9	521-1777
RNS-AT910P/B	ARTENA/S-910 P+B	590	1000	58	955	870	501.5	472	9.6	9.6	636-2170
RNS-AT912P/B	ARTENA/S-912 P+B	590	1200	58	1155	1070	501.5	472	11.3	11.3	750-2550

