

# BRISTAN

## Installation Instructions & User Guide

Please follow these instructions with the end user

Product Code: BRU 5MCDV C (D)

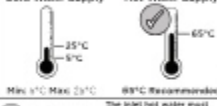
### Specifications

#### Dynamic Water Pressure



Maximum Static Pressure: 10.0 bar

Inlet Water Temperature  
Cold Water Supply Hot Water Supply



**IMPORTANT**  
The inlet hot water must be at least 10°C above the required blend temperature.

#### Inlet Dimensions



#### Inlet Connections



### Prior to Installation

All products manufactured and supplied by Bristan are sold to you with a warranty. They are available below and should always be installed in accordance with Bristan instructions.

This product needs to be installed in accordance with, and meet the requirements of, the Water Supply (Water Fittings) Regulations 1999 and carried by law. For full installation requirements & notes, please contact [www.ukplumbing.com](http://www.ukplumbing.com)

Installation notes must be read for the hot water supply, to ensure correct future maintenance. Before installing this product, the water supply must be thoroughly flushed in order to remove any scale, sediment etc. Full access must be made available for future maintenance/repairs to pipes.

Before drilling into walls, check that there are no hidden electrical wires, cables or water supply pipes. This can be checked with the aid of an electronic detector.

Where tools are used do not forget to:  
- Wear eye protection  
- Use PPE equipment when use

This product must not be modified in any way as this will void the warranty.

If in doubt, contact a registered plumber, your local water authority or the secretary of the Institute of Plumbing, 383 Rd as follows:

The Institute of Plumbing  
64 South Lane,  
145 Southolt,  
Middlesex,  
TW20 2WR, Tel: 01753 477731

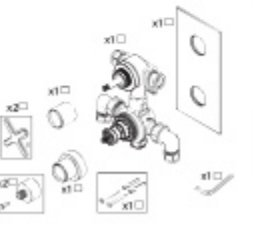
### Cavity Dimensions (mm)

Minimum Fitting Depth: 60mm

Maximum Fitting Depth: 75mm

Concealing Plate Adjustment Range: 5mm

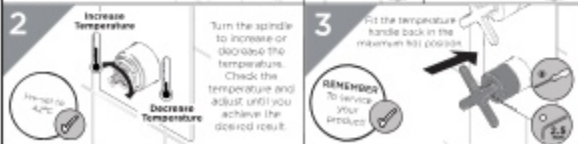
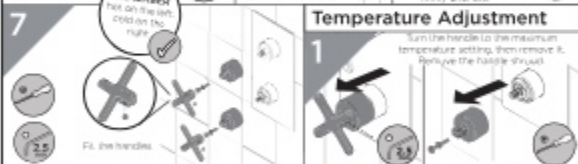
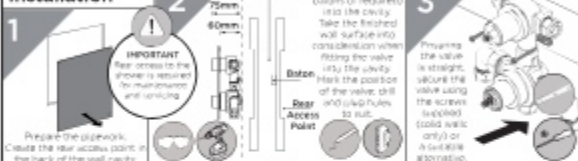
### Pack Contents



### Valve Configuration



### Installation



General Cleaning	Operation
<p>Bristan products are made from premium materials, with hand polished, PVD, EPD or electroplated finishes.</p> <p>Your shower should be regularly cleaned with warm water, a mild pH-neutral liquid soap, and polished with a soft cloth. Any residues from soap, toothpaste, shampoo and shower gels can cause blemishes if not rinsed off straight after use.</p> <p>Household bleaches and cleaners contain harsh chemicals and may damage the surface finish. Avoid using abrasive cloths, scouring pads, scrub sponges, steel wool or anything similar.</p>	

Maintenance - Cartridge Cleaning	
<p><b>1</b></p> <p>Remove the handles.</p>	<p><b>2</b></p> <p>Gently remove the conical ring plate from the wall.</p>
<p><b>4</b></p> <p>Remove any O-rings and soak all components in Bristolone and wash off in clean water. Examine all parts and replace if needed. Use WOLAC approved silicon based grease on all seals.</p>	<p><b>3</b></p> <p>Unscrew the shrouds. Remove the cartridges and piston.</p>
<p><b>5</b></p> <p>Reverse the installation steps, ensuring the temperature stop is aligned correctly.</p>	<p><b>6</b></p> <p>Follow the Temperature Adjustment Steps if required.</p> <p>Labels: 'Increase Temperature' and 'Decrease Temperature' with arrows pointing towards the adjustment stop.</p>

Notes
<p>At Bristan, we want to make things as easy as possible for our customers. That's why we offer 30-day guarantees on all our products, effective from the date of purchase, to give you peace of mind.</p> <p>To start your free guarantee claim, scan the QR code and register your product. Alternatively visit <a href="http://www.bristan.com/register">www.bristan.com/register</a>.</p> <p>For any other queries, please call our Customer Service on 0330 026 6272 where our expert team of advisors will be able to offer you any help and advice.</p> <p>For full guarantee terms and conditions visit <a href="http://www.bristan.com/service-contacts/guarantee">www.bristan.com/service-contacts/guarantee</a>.</p>

Troubleshooting		
Symptom	Cause	Remedy
Intermittent water heater cycles on and off at flow rate or pressure is too low.	Partially closed isolation valve	Open valves on system
	Hot/Cold water being taken off elsewhere causing pressure changes or intermittent boiler temperature changes.	Increase water flow rate or pressure through system
No flow or low flow rate	Heat of water is below the minimum distance required	Refer to the specification for the minimum distance required
	Are the water supply pressures balanced? Hot or cold water being taken off elsewhere causing pressure changes or intermittent boiler temperature changes.	If pressures are unbalanced, a pressure reducing valve should be used for optimum performance.
Hot/Cold water supply has failed	Airlock or partial blockage in the supply network	Do not use other water outlets when using the shower. Flush through pipework and filters to ensure removal of debris and any airlocks.
	Hot/Cold water supply has failed	Check the hot and cold feeds. The shower will not work if either fails.
Maximum Water Temperature too Hot/Cold	Maximum Water Temperature needs adjusting.	Refer to the Temperature Setting section to set your desired maximum temperature.
	Filter/blockage	Flush through pipework and filters to ensure removal of debris and any airlocks.
Outlet Water Temperature too Hot/Cold	Installation conditions outside operating parameters.	Refer to the specification for the minimum distance required.
	Hot water temperature is less than 10°C above the required blend temperature	Adjust hot water temperature or wait for water to reheat if a stored water system is used.
	Intermittent water not heating because the water flow rate is too low.	Increase water flow rate through the system. Refer to the Maintenance section to check the cartridge and filters for any damage. Contact your boiler manufacturer.
Intermittent water not heating because the water pressure is too low.	Intermittent water not heating because the water pressure is too low.	Refer to the specification for system requirements. Increase water pressure through the system. Contact your boiler manufacturer.
	Only hot/cold water from Shower Valve	Hot water supplies are reversed.
Water dripping from shower	Filter/blockage	Flush through pipework and filters to ensure removal of debris and any airlocks.
	This is normal for a short time after using the shower.	This is caused by residual water tension the build up of water in the shower.
Shower does not turn on	If water continues to drip, possibly due to the cartridge.	Remove cartridge and clean, refer to 'Maintenance' section before starting any maintenance.
	Closed isolation valve.	Open isolation valve.
	Main water supply turned off.	Turn on main water supply.

Our Guarantee	
<p>At Bristan, we want to make things as easy as possible for our customers. That's why we offer 30-day guarantees on all our products, effective from the date of purchase, to give you peace of mind.</p> <p>To start your free guarantee claim, scan the QR code and register your product. Alternatively visit <a href="http://www.bristan.com/register">www.bristan.com/register</a>.</p> <p>For any other queries, please call our Customer Service on 0330 026 6272 where our expert team of advisors will be able to offer you any help and advice.</p> <p>For full guarantee terms and conditions visit <a href="http://www.bristan.com/service-contacts/guarantee">www.bristan.com/service-contacts/guarantee</a>.</p>	
<p><b>Bristan Group Ltd.</b>            UK: Bristan Group, 476 G6            Manor Square 2 &amp; 3, 14 Blue Bristan            8822 Meresford, Lancashire.</p>	<p><b>Customer Service:</b> +44-0330 026 6272  <b>Web:</b> <a href="http://www.bristan.com">www.bristan.com</a>  <b>Email:</b> <a href="mailto:enquiry@bristan.com">enquiry@bristan.com</a></p>

# BRISTAN

## Installation Instructions & User Guide

Please leave these instructions  
with the end user

FHC ABSQ01 Range (D2)

### Specifications

#### Dynamic Water Pressure

Min: 0.2 bar Max: 5.0 bar



Maximum Static Pressure: 10.0 bar

#### Inlet Water Temperature



Maximum Hot 60°C

#### IMPORTANT

The inlet hot water must be at  
least 10°C above the require  
blend temperature.

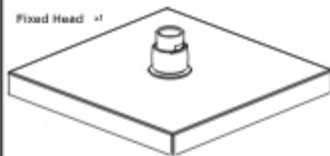
#### Inlet Connections



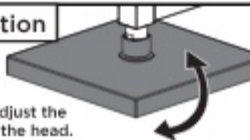
1/2" BSP (female)

### Pack Contents

Fixed Head x1



### Operation



Tilt to adjust the  
angle of the head.

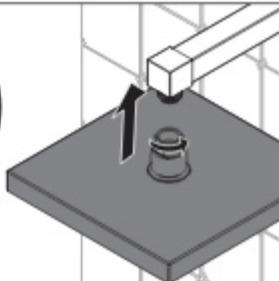
### Installation



Products shown in these instructions are for illustration  
purposes only. Your shower can still be installed and operated by  
following these instructions.



Ensure the washer  
is correctly inserted  
into the fixed head.



Screw the shower head onto the wall arm by  
**HAND ONLY**. Turn on the water supply and check all  
joints and connections for any leaks.

### Prior to Installation

All products manufactured and supplied by Britsan are safe to use provided that they are installed,  
operated and receive regular maintenance in accordance with these instructions.

This product needs to be installed in accordance with, and meet the requirements of The Water Supply (Water  
Fittings) Regulations (Northern Ireland) 2009 and The Water Supply (Water Fittings) (Scotland) Byelaws 2004.  
For full Installation Requirements & Notes (PIN) please visit [www.wasapprovals.co.uk/approvals-directory](http://www.wasapprovals.co.uk/approvals-directory)

Isolation valves must be fitted to the inlet water supply to ensure ease of future maintenance. Before installing the  
product the water supply must be thoroughly flushed in order to remove any silt, solder etc. Full access must be  
made available for future maintenance/servicing purposes.

If power tools are used do not forget to: - Wear eye protection - Unplug equipment after use

This product must not be modified in any way as this will invalidate the guarantee.

### Spare Parts



To replace any spare  
parts for your tap, why  
not scan the QR Code or  
visit [www.bristan.com](http://www.bristan.com)  
and search for  
your product.

# Cleaning

## General Cleaning

Bristan products are made from premium materials, with hand polished, PVD, EPD or electroplated finishes. Your product should be regularly cleaned with warm water, a mild pH-neutral liquid soap, and polished with a soft cloth. Any residues from soap, toothpaste, shampoos and shower gels can cause blemishes if not rinsed off straight after use.

Household bleaches and cleaners contain harsh chemicals and may damage the surface finish. Avoid using abrasive cloths, scouring pads, scrub sponges, steel wool or anything similar.

## Cleaning The Shower Head

Your Bristan shower head is equipped with rub-clean nozzles for easy cleaning. Simply rub your fingers across the rubber spray jets regularly and before you turn the shower on to remove and scale or debris.

The hardness of the water in your area will determine how often you should clean your shower head. Build up of scale in particularly hard water areas combined with constant use means you may need to clean your shower head weekly. To ensure continued performance, the shower head needs to be regularly de-scaled.

## Contact Us

**Bristan Group Ltd.**  
**A Masco Company**

**BRISTAN**

part of **BRISTAN GROUP**

**UK:** Bristan Group,  
Pooley Hall Drive,  
Birch Coppice Business Park,  
Dordon, Tamworth  
B78 1SG.

**EU:** Masco Europe S.à.r.l.  
14 Rue Strachen  
6933 Mensdorf  
Luxembourg

**Email Us:** [enquire@bristan.com](mailto:enquire@bristan.com)  
**Website:** [www.bristan.com](http://www.bristan.com)  
**Call Us:** +44330 026 6273

## Our Guarantee

At Bristan, we want to make things as easy as possible for our customers. That's why we offer solid guarantees on all our products, effective from the date of purchase, to give you peace of mind.

To start your free guarantee simply scan the QR code and register your product. Alternatively visit [www.bristan.com/register](http://www.bristan.com/register).

For any other queries, please call our Customer Service on 0330 026 6273 where our expert team of advisers will be able to offer you any help and advice.

For full guarantee terms and conditions visit [www.bristan.com/service-centre/guarantees](http://www.bristan.com/service-centre/guarantees).



# BRISTAN

## Installation Instructions & User Guide

Please leave these instructions  
with the end user

ARM WASG01 Range (D6)

### Specifications

#### Dynamic Water Pressure

Min: 0.2 bar Max: 5.0 bar



Maximum Static Pressure: 10.0 bar

#### Inlet Water Temperature



Maximum Hot 65°C

#### IMPORTANT

The inlet hot water must be at  
least 10°C above the require  
blend temperature.

#### Inlet Connections



1/2" BSP

### Pack Contents

Shroud x1



Backnut x1

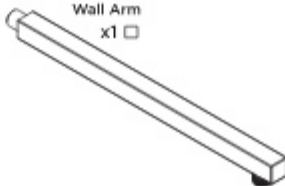


Rubber  
Washer x1



Wall Arm

x1



### Tools Required for Installation



Pipe Cutter



Pencil



Adjustable Spanner



Drill



PTFE Tape



Safety  
Goggles



Electronic Detector

### Prior to Installation

All products manufactured and supplied by Bristan are safe to use provided that they are installed, operated and receive regular maintenance in accordance with these instructions.

This product needs to be installed in accordance with, and meet the requirements of The Water Supply (Water Fittings) Regulations (Northern Ireland) 2009 and The Water Supply (Water Fittings) (Scotland) Byelaws 2004. For full installation Requirements & Notes (PIN) please visit [www.wasapprovals.co.uk/approvals-directory](http://www.wasapprovals.co.uk/approvals-directory)

Isolation valves must be fitted to the inlet water supply to ensure ease of future maintenance. Before installing the product the water supply must be thoroughly flushed in order to remove any silt, solder etc. Full access must be made available for future maintenance/servicing purposes.

If power tools are used do not forget to:

- Wear eye protection

- Unplug equipment after use

This product must not be modified in any way as this will invalidate the guarantee.

### Spare Parts



To replace any spare  
parts for your tap, why  
not scan the QR Code or  
visit: [www.bristan.com](http://www.bristan.com)  
and search for  
your product.

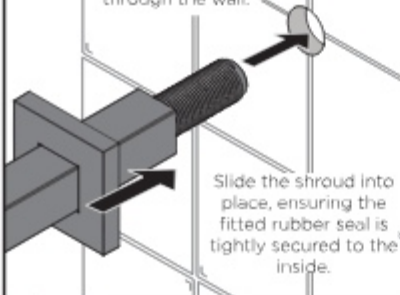
# Installation



PLEASE NOTE - Products shown in these instructions are for illustration purposes only. Your product can still be installed by following these instructions.

1

Thread the arm through the wall.



Slide the shroud into place, ensuring the fitted rubber seal is tightly secured to the inside.

2

Place the rubber washer followed by the backnut onto the threaded connection.



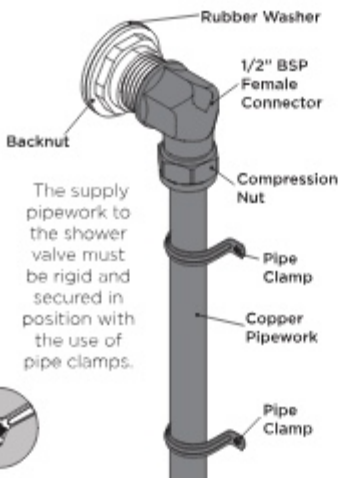
Slide the washer towards the wall and tighten the backnut.

Ensure the arm is stable and secured in place.



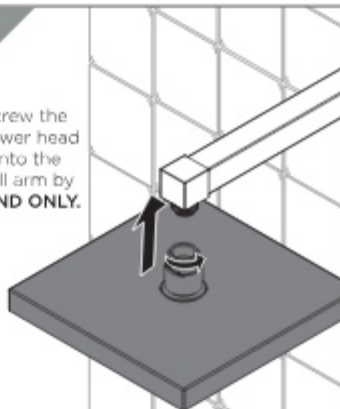
3

Connect the outlet pipework to the shower arm using a suitable connector (not supplied).



4

Screw the shower head onto the wall arm by **HAND ONLY**.



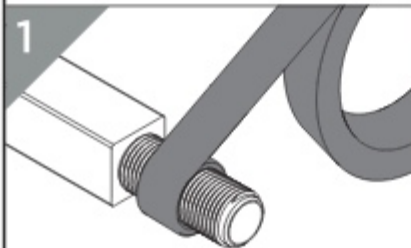
Turn on the water supply and check all joints and connections for any leaks.

## Alternative Installation



PLEASE NOTE - Products shown in these instructions are for illustration purposes only. Your riser outlet can still be installed by following these instructions.

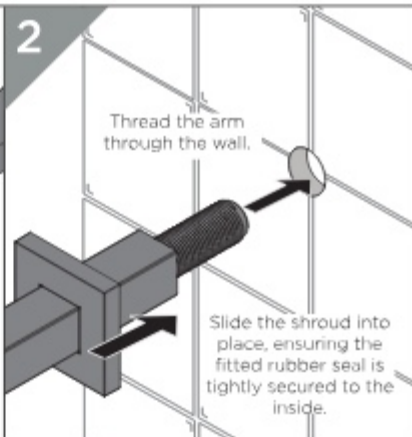
1



Use a suitable sealant that is compliant with UK Water Regulations around the thread.



2

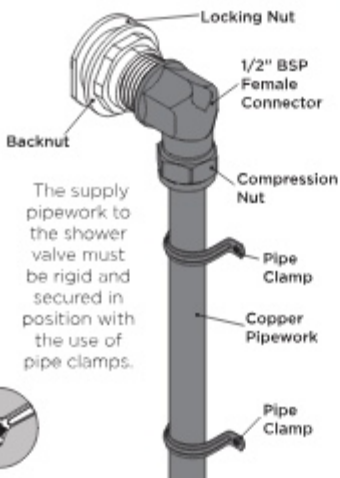


Thread the arm through the wall.

Slide the shroud into place, ensuring the fitted rubber seal is tightly secured to the inside.

3

Connect the outlet pipework to the shower arm using a suitable connector (not supplied).

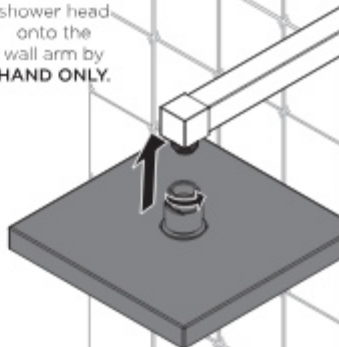


The supply pipework to the shower valve must be rigid and secured in position with the use of pipe clamps.



4

Screw the shower head onto the wall arm by **HAND ONLY**.



Turn on the water supply and check all joints and connections for any leaks.

# Cleaning

## General Cleaning

Bristan products are made from premium materials, with hand polished, PVD, EPD or electroplated finishes. Your product should be regularly cleaned with warm water, a mild pH-neutral liquid soap, and polished with a soft cloth. Any residues from soap, toothpaste, shampoos and shower gels can cause blemishes if not rinsed off straight after use.

Household bleaches and cleaners contain harsh chemicals and may damage the surface finish. Avoid using abrasive cloths, scouring pads, scrub sponges, steel wool or anything similar.

## Cleaning The Shower Head

The hardness of the water in your area will determine how often you should clean your shower head. Build up of scale in particularly hard water areas combined with constant use means you may need to clean your shower head weekly. To ensure continued performance, the shower head needs to be regularly de-scaled.

## Contact Us

**Bristan Group Ltd.**  
**A Masco Company**

**BRISTAN**

part of **BRISTAN GROUP**

**UK:** Bristan Group,  
Pooley Hall Drive,  
Birch Coppice Business Park,  
Dordon, Tamworth  
B78 1SG.

**EU:** Masco Europe S.à.r.l.  
14 Rue Strachen  
6933 Mensdorf  
Luxembourg

**Email Us:** [enquire@bristan.com](mailto:enquire@bristan.com)  
**Website:** [www.bristan.com](http://www.bristan.com)  
**Call Us:** +44330 026 6273

## Our Guarantee

At Bristan, we want to make things as easy as possible for our customers. That's why we offer solid guarantee on all our products, effective from the date of purchase, to give you peace of mind.

To start your free guarantee simply scan the QR code and register your product.  
Alternatively visit [www.bristan.com/register](http://www.bristan.com/register).



For any other queries, please call our Customer Service on 0330 026 6273 where our expert team of advisers will be able to offer you any help and advice.

For full guarantee terms and conditions visit [www.bristan.com/service-centre/guarantees](http://www.bristan.com/service-centre/guarantees).



## Notes

Please use this space for any notes you or your installer may have regarding the installation/plumbing of this product.

## General Cleaning

Bristan products are made from premium materials, with hand polishing and electroplated, PVD or EPD finishes.

Your taps, shower and accessories should be regularly cleaned with warm water, a mild pH-neutral liquid soap, and polished with a soft cloth. Any residues from soap, toothpaste, shampoos and shower gels can cause blemishes if not rinsed off straight after use.

Household bleaches and cleaners contain harsh chemicals and may damage the surface finish.

Avoid using abrasive cloths, scouring pads, scrub sponges, steel wool or anything similar.

## Contact Us

**BRISTAN**by BRISTAN GROUP

**Bristan Group Ltd.**  
A Masco Company

**UK:** Bristan Group,  
Pockley Hall Drive,  
Birch Coppice Business Park,  
Dorcan, Tainworth  
B78 15G

**EU:** Masco Europe S.à.r.l.  
14 Rue Strachen  
6933 Mersdorf  
Luxembourg

**Email Us:** [enquire@bristan.com](mailto:enquire@bristan.com)  
**Website:** [www.bristan.com](http://www.bristan.com)  
**Call Us:** +44330 026 6275

## Our Guarantee

At Bristan, we want to make things as easy as possible for our customers. That's why we offer solid guarantees on all our products, effective from the date of purchase, to give you peace of mind.

To start your free guarantee simply scan the QR code and register your product. Alternatively visit:

[www.bristan.com/register](http://www.bristan.com/register).

For any other queries, please call our Customer Service on 0330 026 6275 where our expert team of advisors will be able to offer you any help and advice.

For full guarantee terms and conditions visit [www.bristan.com/service-centre/guarantees](http://www.bristan.com/service-centre/guarantees)

