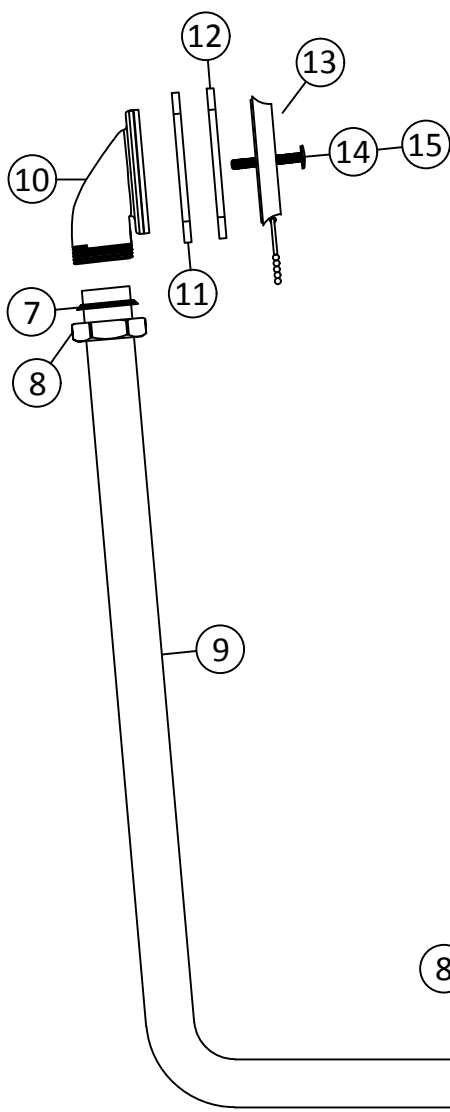


GENERAL FITTING GUIDE

EXPOSED BATH WASTE

1. Identify all components are present prior to installation.
2. Remove fixing bolt (2) from flange (3), then remove the waste plate from the waste body (6).
3. Secure the waste body (6) against the underneath of the bath with the sealing washer (5) in position. Use the waste plate (3) with the rubber washer (4) between the waste plate & the bath, securing the assembly with fixing bolt (2). Do not over tighten. Use a silicone sealant where necessary.
4. Use the conical washer (7) and fixing nut (8), in the order shown, to hold the tube (9) into the waste body (6).
5. Use the same process to assemble the overflow elbow (10) to the tube (9).
6. Secure the overflow elbow (10) to the bath using the sealing washer (11) & the overflow washer (12), positioned either side of the bath surface. Then place the overflow face (13) on top of the overflow washer (12) & secure the assembly using fixing screw (14). Use a silicone sealant as necessary.
7. Tighten fixing screw (14). (DO NOT OVER TIGHTEN).
8. Check all joints & connections for leaks.



COMPONENTS

1. PLUG & CHAIN ASSEMBLY
2. FIXING BOLT
3. WASTE PLATE
4. RUBBER WASHER
5. SEALING WASHER
6. WASTE BODY
7. CONICAL WASHER
8. FIXING NUT
9. CHROME TUBE (Oversize)
10. OVERFLOW ELBOW
11. OVERFLOW SEAL WASHER
12. OVERFLOW RUBBER WASHER
13. OVERFLOW FACE
14. FIXING SCREW 25mm
15. FIXING SCREW 35mm

