

BRISTAN

Installation Instructions & User Guide

Please leave these instructions with the end user

Product Code: N31 SHC/DV/BB (DU)

Specifications

Dynamic Water Pressure



Maximum Static Pressure: 10.0 bar

Inlet Water Temperature

Cold Water Supply



Min: 5°C Max: 25°C

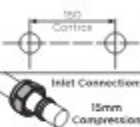
Hot Water Supply



85°C Recommended

IMPORTANT
The inlet hot water must be at least 10°C above the required outlet temperature.

Inlet Dimensions



15mm Compression

Tools You'll Need



Prior to Installation

All products manufactured and supplied by Bristan are sold to you with a 3-year warranty. They are not subject to standard electrical safety regulations in Australia or New Zealand. Instructions.

This product needs to be installed in accordance with, and meet the requirements of, the Water Supply (Water Fit) Regulations 2010 and current by-laws. For full installation requirements & notes, refer to the website: www.bristan.com.au

Installation notes must be followed for the inlet water supplies. In some cases, all future maintenance requires the drilling into product. The maker's warranty must be thoroughly checked in order to remove any voided/warranty voided area. Full access must be made available for future maintenance/repairs/repairs.

Before drilling into walls, check that there are no hidden electrical wires, cables or water supply pipes. This can be checked with the aid of an electrician, electrician.

If power tools are used do not forget to:
- Wear eye protection
- Wear ear protection when use

This product must not be modified in any way as this will void the 3-year warranty.

If in doubt, contact a registered plumber, your local water authority or the secretary of the Institute of Plumbing, 369 N31 as follows:

The Institute of Plumbing
64 SOUTH LANE
403 SOUTH
DUNDEE
PERTH WA 6150 (08) 94777111

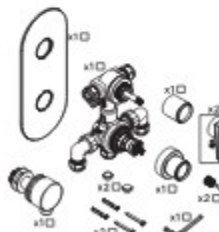
Cavity Dimensions (mm)

Minimum Fitting Depth: 60mm

Maximum Fitting Depth: 75mm

Concealing Plate Adjustment Range: 5mm

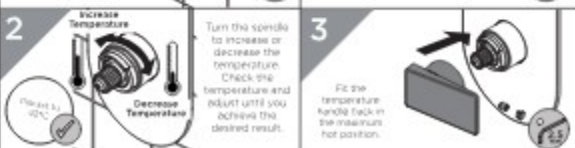
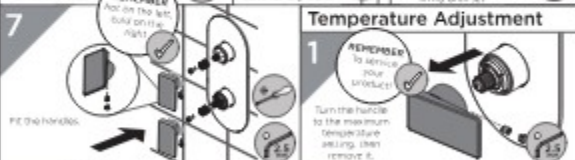
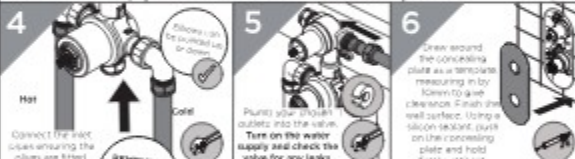
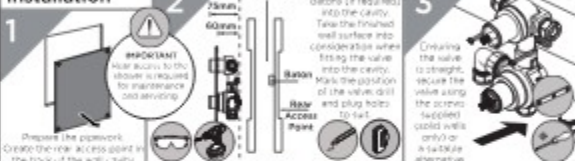
Pack Contents



Valve Configuration



Installation



General Cleaning	Operation
<p>Bristan products are made from premium materials, with hand polished, PVD, EPD or electroplated finishes.</p> <p>Your shower should be regularly cleaned with warm water, a mild pH-neutral liquid soap, and polished with a soft cloth. Any residues from soap, toothpaste, shampoo and shower gels can cause blisters if not rinsed off straight after use.</p> <p>Household bleaches and cleaners contain harsh chemicals and may damage the surface finish, avoid using abrasive cloths, scouring pads, scrub sponges, steel wool or anything similar.</p>	<p>Right Outlet On Increased Temperature</p> <p>Left Outlet On Decreased Temperature</p>

Wall Outlet Installation	With rear access
<p>Choose the location for the wall outlet and create a 23-50mm hole in the wall. Ensure your shower accessories have enough reach from that position. Finish the wall surface.</p>	<p>Fit the wall outlet ensuring the wires are fitted inside the side of the wall.</p>
<p>Servicing Intervals</p> <p>To reduce the build-up of lime scale and to ensure the shower works to its maximum performance we recommend this shower is serviced every 6-12 months depending on the hardness of your water.</p>	<p>Without rear access</p> <p>Go to Step 5 in the Installation Steps.</p> <p>Follow Step 5 in the Installation Steps, fitting a 1/2" female connector at the hole in the wall (not supplied).</p> <p>Screw the wall outlet into the 1/2" female connector, using a suitable thread sealant ensuring the cable seal is fixed to the back of the wall outlet.</p>

Maintenance - Cartridge Cleaning		
<p>1 Remove the handles.</p>	<p>2 IMPORTANT! Flush the water supply before entering interior.</p>	<p>3</p> <p>Carefully remove the concealing plate from the wall.</p>
<p>4</p> <p>Unscrew the screws. Remove the cartridge and piston.</p>	<p>5</p> <p>Follow the Temperature Adjustment Steps if required.</p> <p>Increase Temperature</p> <p>Decrease Temperature</p>	<p>6</p> <p>Reverse the installation steps, ensuring the temperature stop is aligned correctly.</p>
<p>4 Remove any limescale and scale off in clean water. Examine all seals and replace if needed. Use WD40 applied twice to ease grease on all seals.</p>	<p>5</p>	<p>6</p>

Troubleshooting		
Symptom	Cause	Remedy
Intermittent water heater cycles on and off at flow rate or pressure is too low.	Pressure (cold) outlet valve	Open coils on valves
Hot/Cold water being taken off shower causing pressure changes or intermittent boiler temperature changes.	Hot/Cold water supply has failed	Check the hot and cold feeds. The shower will not work if either fails.
Hot or cold water being taken off shower causing pressure changes or intermittent boiler temperature changes.	Maximum Water Temperature needs adjusting	Refer to the Temperature Setting section to set your desired maximum temperature.
Hot water temperature is less than 10°C above the required blend temperature.	Filter/blockage	Flush through pipework and filters to ensure removal of debris and any airlocks.
Intermittent water not working because the water flow (cold) is too low.	Installation conditions provide opposing pressures	Refer to the specification for the minimum distance required.
Intermittent water not working because the water pressure is too low.	Hot water temperature is less than 10°C above the required blend temperature	Adjust hot water temperature or wait for water to reheat if a stored water system is used.
Intermittent water not working because the water pressure is too low.	Intermittent water not working because the water flow (cold) is too low.	Increase water flow rate through the system. Refer to the maintenance section to check/flush the cartridge and filters for any damage. Contact your boiler manufacturer.
Intermittent water not working because the water pressure is too low.	Intermittent water not working because the water pressure is too low.	Refer to the specification for system requirements. Increase water pressure through the system. Contact your boiler manufacturer.
Only hot/cold water from Shower Valve	Hot water supplies are opened	Check the water inlet connections are the correct way around. Hot on the left, Cold on the right when viewed from the front. Rework pipework if necessary.
Water dripping from shower	Filter/blockage	Flush through pipework and filters to ensure removal of debris and any airlocks.
Water dripping from shower	This is normal for a short time after using the shower. If water continues to drip, possibly due to the cartridge	This is caused by residual water tension, the build up of water in the shower. Remove cartridge and clean, refer to 'Maintenance' section before starting any maintenance.
Shower does not turn on	Closed isolation valve	Open isolation valve.
Shower does not turn on	Main water supply turned off	Turn on main water supply.

Our Guarantee	
<p>At Bristan, we want to make things as easy as possible for our customers. That's why we offer 100% guarantees on all our products, effective from the date of purchase, to give you peace of mind.</p> <p>To start your free guarantee enquiry, scan the QR code and explore your product.</p> <p>Alternatively visit www.bristan.com/register.</p> <p>For any other queries, please call our Customer Service on 0330 026 6272 where our expert team of advisors will be able to help you any help and advice.</p> <p>Our full guarantee terms and conditions visit www.bristan.com/service-contacts/guarantee.</p>	
<p>Bristan Group Ltd. UK: Bristan Group, 17th Fl, Metro Square 2 & 3, 14 Rue Brichet 8522 Hennefont, La Roche-sur-Yvon</p>	<p>Customer Service: +44-330 026 6272 Web: www.bristan.com Email: enquiry@bristan.com</p>
<p>BRISTAN A Moce Company</p>	

BRISTAN

Installation Instructions & User Guide

Please leave these instructions
with the end user

ARM CTRD02 BB (D3)

Specifications

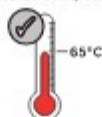
Dynamic Water Pressure

Min: 0.2 bar Max: 5.0 bar



Maximum Static Pressure: 10.0 bar

Inlet Water Temperature



Maximum Hot 65°C

IMPORTANT

The inlet hot water must be at
least 10°C above the require
blend temperature.

Inlet Connections



1/2" BSP

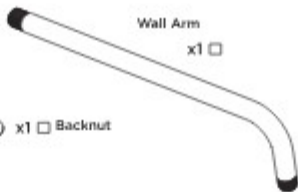
Pack Contents

Shroud x1



Wall Arm

x1



Rubber
Washer

x1



x1 Backnut



Tools Required for Installation



Pipe Cutter



Pencil



Adjustable Spanner



Drill



PTFE Tape



Safety
Goggles



Electronic Detector

Prior to Installation

All products manufactured and supplied by Britan are safe to use provided that they are installed, operated and receive regular maintenance in accordance with these instructions.

This product needs to be installed in accordance with, and meet the requirements of The Water Supply (Water Fittings) Regulations (Northern Ireland) 2009 and The Water Supply (Water Fittings) (Scotland) Byelaws 2004. For full installation Requirements & Notes (PIN) please visit www.wasapprovals.co.uk/approvals-directory

Isolation valves must be fitted to the inlet water supply to ensure ease of future maintenance. Before installing the product the water supply must be thoroughly flushed in order to remove any silt, solder etc. Full access must be made available for future maintenance/servicing purposes.

If power tools are used do not forget to: - Wear eye protection - Unplug equipment after use

This product must not be modified in any way as this will invalidate the guarantee.

Spare Parts



To replace any spare
parts for your tap, why
not scan the QR Code or
visit: www.bristan.com
and search for
your product.

Installation



PLEASE NOTE - Products shown in these instructions are for illustration purposes only. Your product can still be installed by following these instructions.

1

Thread the arm through the wall.

Slide the shroud into place, ensuring the fitted rubber seal is tightly secured to the inside.

2

Place the rubber washer followed by the backnut onto the threaded connection.



Slide the washer towards the wall and tighten the backnut.

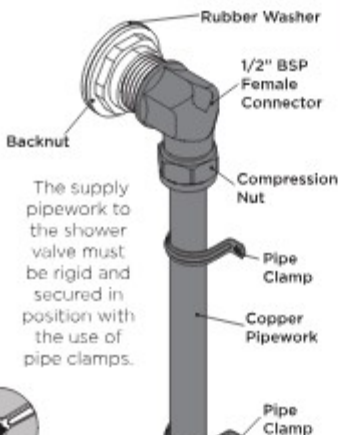


Ensure the arm is stable and secured in place.



3

Connect the outlet pipework to the shower arm using a suitable connector (not supplied).



4

Screw the shower head onto the wall arm by **HAND ONLY**.



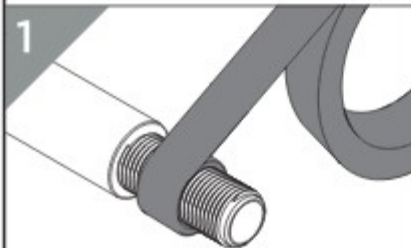
Turn on the water supply and check all joints and connections for any leaks.

Alternative Installation



PLEASE NOTE - Products shown in these instructions are for illustration purposes only. Your riser outlet can still be installed by following these instructions.

1



Use a suitable sealant that is compliant with UK Water Regulations around the thread.



2

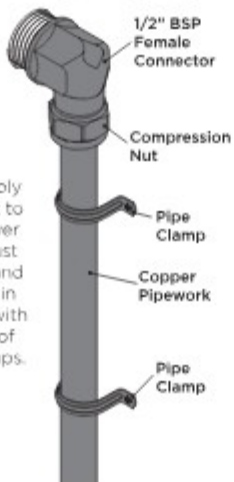


Thread the arm through.

Slide the shroud into place, ensuring the fitted rubber seal is tightly secured to the inside.

3

Connect the outlet pipework to the shower arm using a suitable connector (not supplied).



The supply pipework to the shower valve must be rigid and secured in position with the use of pipe clamps.

1/2" BSP
Female
Connector

Compression
Nut

Pipe
Clamp

Copper
Pipework

Pipe
Clamp

4

Screw the shower head onto the wall arm by **HAND ONLY**.



Turn on the water supply and check all joints and connections for any leaks.

Cleaning

General Cleaning

Bristan products are made from premium materials, with hand polished, PVD, EPD or electroplated finishes. Your product should be regularly cleaned with warm water, a mild pH-neutral liquid soap, and polished with a soft cloth. Any residues from soap, toothpaste, shampoos and shower gels can cause blemishes if not rinsed off straight after use.

Household bleaches and cleaners contain harsh chemicals and may damage the surface finish. Avoid using abrasive cloths, scouring pads, scrub sponges, steel wool or anything similar.

Cleaning The Shower Head

The hardness of the water in your area will determine how often you should clean your shower head. Build up of scale in particularly hard water areas combined with constant use means you may need to clean your shower head weekly. To ensure continued performance, the shower head needs to be regularly de-scaled.

Contact Us

Bristan Group Ltd.
A Masco Company

BRISTAN

part of **BRISTAN GROUP**

UK: Bristan Group,
Pooley Hall Drive,
Birch Coppice Business Park,
Dordon, Tamworth
B78 1SG.

EU: Masco Europe S.à.r.l.
14 Rue Strachen
6933 Mendsdorf
Luxembourg

Email Us: enquire@bristan.com
Website: www.bristan.com
Call Us: +44330 026 6273

Our Guarantee

At Bristan, we want to make things as easy as possible for our customers. That's why we offer solid guarantee on all our products, effective from the date of purchase, to give you peace of mind.

To start your free guarantee simply scan the QR code and register your product.
Alternatively visit www.bristan.com/register.



For any other queries, please call our Customer Service on 0330 026 6273 where our expert team of advisers will be able to offer you any help and advice.

For full guarantee terms and conditions visit www.bristan.com/service-centre/guarantees.

BRISTAN

Installation Instructions & User Guide

Please leave these instructions
with the end user

FH SLRD01 BB (D2)

Specifications

Dynamic Water Pressure

Min: 0.2 bar Max: 5.0 bar



Maximum Static Pressure: 10.0 bar

Inlet Water Temperature



Maximum Hot 85°C

IMPORTANT

The inlet hot water must be at
least 10°C above the require
blend temperature.

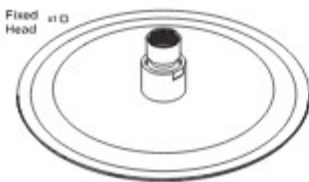
Inlet Connections



1/2" BSP (female)

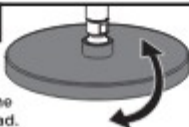
Pack Contents

Filter
Washer 



Operation

Tilt to adjust
the angle of the head.



Installation



Products shown in these instructions are for illustration
purposes only. Your shower can still be installed and operated by
following these instructions.



Ensure the filter
washer is correctly
inserted into the
fixed head.



Screw the shower head onto the wall arm by
HAND ONLY. Turn on the water supply and check all
joints and connections for any leaks.

Prior to Installation

All products manufactured and supplied by Bristan are safe to use provided that they are installed,
operated and receive regular maintenance in accordance with these instructions.

This product needs to be installed in accordance with, and meet the requirements of The Water Supply (Water
Fittings) Regulations (Northern Ireland) 2009 and The Water Supply (Water Fittings) (Scotland) Byelaws 2004.
For full Installation Requirements & Notes (PIN) please visit www.wasapprovals.co.uk/approvals-directory

Isolation valves must be fitted to the inlet water supply to ensure ease of future maintenance. Before installing the
product the water supply must be thoroughly flushed in order to remove any silt, solder etc. Full access must be
made available for future maintenance/servicing purposes.

If power tools are used do not forget to: - Wear eye protection - Unplug equipment after use

This product must not be modified in any way as this will invalidate the guarantee.

Spare Parts



To replace any spare
parts for your tap, why
not scan the QR Code or
visit www.bristan.com
and search for
your product.

Cleaning

General Cleaning

Bristan products are made from premium materials, with hand polished, PVD, EPD or electroplated finishes. Your product should be regularly cleaned with warm water, a mild pH-neutral liquid soap, and polished with a soft cloth. Any residues from soap, toothpaste, shampoos and shower gels can cause blemishes if not rinsed off straight after use.

Household bleaches and cleaners contain harsh chemicals and may damage the surface finish. Avoid using abrasive cloths, scouring pads, scrub sponges, steel wool or anything similar.

Cleaning The Shower Head

Your Bristan shower head is equipped with rub-clean nozzles for easy cleaning. Simply rub your fingers across the rubber spray jets regularly and before you turn the shower on to remove and scale or debris.

The hardness of the water in your area will determine how often you should clean your shower head. Build up of scale in particularly hard water areas combined with constant use means you may need to clean your shower head weekly. To ensure continued performance, the shower head needs to be regularly de-scaled.

Contact Us

Bristan Group Ltd.
A Masco Company

BRISTAN

part of **BRISTAN GROUP**

UK: Bristan Group,
Pooley Hall Drive,
Birch Coppice Business Park,
Dordon, Tamworth
B78 1SG.

EU: Masco Europe S.à.r.l.
14 Rue Strachen
6933 Mensdorf
Luxembourg

Email Us: enquire@bristan.com
Website: www.bristan.com
Call Us: +44330 026 6273

Our Guarantee

At Bristan, we want to make things as easy as possible for our customers. That's why we offer solid guarantees on all our products, effective from the date of purchase, to give you peace of mind.

To start your free guarantee simply scan the QR code and register your product. Alternatively visit www.bristan.com/register.

For any other queries, please call our Customer Service on 0330 026 6273 where our expert team of advisers will be able to offer you any help and advice.

For full guarantee terms and conditions visit www.bristan.com/service-centre/guarantees.



BRISTAN

Installation Instructions & User Guide

Please leave these instructions
with the end user

Product Code: C W5002 80 (D)

Specifications

Working Pressure



Tools You'll Need



Inlet Connections



15mm Compression Nut
via Wall Mount

Maximum Static Pressure: 10.0 bar

Adjustable corner

Prior to Installation

All products manufactured and supplied by Britan are made in the UK. They are installed using correct and secure (e.g. crimp) connections in accordance with state-of-the-art standards.

Installation must be done in accordance with the requirements of the Water Supply (Water Fittings) Regulations 1999 and Scottish Bylaws 2004.

This product must not be modified in any way as this will void the guarantee.

Full access must be made available for future maintenance / servicing purposes. This product needs to be installed in accordance with and meet the requirements of the Water Supply (Water Fittings) Regulations 1999 and Scottish Bylaws 2004.

Before using any installation please consider the following: install in a dry, well-ventilated area, away from any hot surfaces, pipes, cables or water supply lines. This can be checked with the aid of an electronic detector.

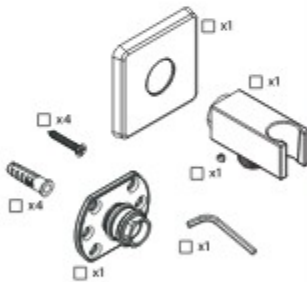
If power tools are used do not forget to:
- wear eye protection
- always disconnect power use

Warning! It is essential that you thoroughly flush through the shower before use. This is to ensure any manufacturing debris is removed. Failure to carry out this procedure could cause problems or damage.

If in doubt, contact a registered plumber or your Local Water Authority at the locality of the install or Plumbing Services at Britan:

The Institute of Plumbing
66 Chiswell Lane,
Henham Road,
Dorset
BH52 6NS. Tel: 01705 412709

Pack Contents



Spare Parts

To replace any spare parts for your product why not scan the QR Code or visit www.britan.com and search for your product.



Installation

1



Uncrew the nut from the front of the metal backplate then remove the olive. Ensure the rubber backplate starts with the metal backplate for fitting.

2



Fit plumbing to location and cut pipework to length. The distance of the pipe protruding from the wall must be 23-30mm. Place wall plate over the pipe against the (red) surface. Mark the screw holes.

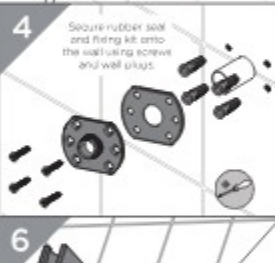
Max. 30mm

3



Check wall for concealed wires and pipework. Drill holes where marked.

4



Secure rubber seal and fixing kit onto the wall using screws and wall plugs.

5



IMPORTANT
Hardware must not protrude past the olive by more than 10mm

Push olive onto pipe, then connect the threaded connector to the fixing kit. Tighten with an adjustable spanner. **DO NOT OVER TIGHTEN.** Place the wall shield over the nut, olive and protruding pipework.

6



Carefully push the wall arm into the backplate and secure in place with the grub screw. Screw the shower hose (not supplied) onto the outlet ensuring the sealing washer is fitted.

Notes

Please use this space for any notes you or your installer may have regarding the installation/plumbing of this product.

General Cleaning

Bristan products are made from premium materials, with hand polishing and electroplated, PVD or EPD finishes.

Your taps, shower and accessories should be regularly cleaned with warm water, a mild pH-neutral liquid soap, and polished with a soft cloth. Any residues from soap, toothpaste, shampoos and shower gels can cause blemishes if not rinsed off straight after use.

Household bleaches and cleaners contain harsh chemicals and may damage the surface finish.

Avoid using abrasive cloths, scouring pads, scrub sponges, steel wool or anything similar.

Contact Us

BRISTANby MASCO GROUP

Bristan Group Ltd.
A Masco Company

UK: Bristan Group,
Pooley Hall Drive,
Birch Coppice Business Park,
Dorcan, Tainworth
B78 15G

EU: Masco Europe S.à.r.l.
14 Rue Strehen
6933 Mersdorf
Luxembourg

Email Us: enquire@bristan.com
Website: www.bristan.com
Call Us: +44330 026 6275

Our Guarantee

At Bristan, we want to make things as easy as possible for our customers. That's why we offer solid guarantees on all our products, effective from the date of purchase, to give you peace of mind.

To start your free guarantee simply scan the QR code and register your product. Alternatively visit

www.bristan.com/register.

For any other queries, please call our Customer Service on 0330 026 6275 where our expert team of advisors will be able to offer you any help and advice.

For full guarantee terms and conditions visit www.bristan.com/service-centre/guarantees

