



General Cleaning	Operation
<p>Bristan products are made from premium materials, with hand polished, PVD, EPD or electroplated finishes.</p> <p>Your shower should be regularly cleaned with warm water, a mild pH-neutral liquid soap, and polished with a soft cloth. Any residues from soap, toothpaste, shampoo and shower gels can cause blisters if not rinsed off straight after use.</p> <p>Household bleaches and cleansers contain harsh chemicals and may damage the surface finish, avoid using abrasive cloths, scouring pads, scrub sponges, steel wool or anything similar.</p>	<p>Right Outlet On Increased Temperature</p> <p>Left Outlet On Decreased Temperature</p>

Wall Outlet Installation	With rear access
<p>Choose the location for the wall outlet and create a 23-50mm hole in the wall. Ensure your shower accessories have enough reach from that position. Finish the wall surface.</p>	<p>Fit the wall outlet ensuring the wires are fitted either side of the wall.</p>
<p>Go to Step 5 in the Installation Steps.</p>	<p>Without rear access</p> <p>Follow Step 5 in the Installation Steps, fitting a 1/2" female connector at the hole in the wall (not supplied).</p> <p>Screw the wall outlet into the 1/2" female connector, using a suitable thread sealant ensuring the cable seal is fixed to the back of the wall outlet.</p>

Maintenance - Cartridge Cleaning	
<p>1 Remove the handles.</p>	<p>2 <b>IMPORTANT</b> Flush the water supply before entering interior.</p>
<p>3 Gently remove the concealing plate from the wall.</p>	<p>4 Unscrew the screws. Remove the cartridge and piston.</p>
<p>5 Remove any limescale and scale off components in de-scale and wash off in clean water. Examine all seals and replace if needed. Use WD40 applied twice to ease grease on all seals.</p>	<p>6 Follow the Temperature Adjustment Steps if required.</p> <p>Increase Temperature</p> <p>Decrease Temperature</p>
<p>7 Reverse the installation steps, ensuring the temperature stop is aligned correctly.</p>	

Troubleshooting		
Symptom	Cause	Remedy
Intermittent water heater cycles on and off at flow rate or pressure is too low.	Pressure (closed isolation valve)	Open valves on valves
Hot/cold water being taken off ensuring causing pressure changes or intermittent boiler temperature changes.	Increase water flow rate or pressure through system	
No flow or low flow rate	Isol./Cold water supply has failed	Refer to the specification for the minimum distance required
Hot or cold water being taken off ensuring causing pressure changes or intermittent boiler temperature changes.	Are the water supply components balanced?	If pressures are unbalanced, a pressure reducing valve should be used for optimum performance
Hot/Cold water supply has failed	High through pipework and filters to ensure removal of debris and any airlocks	Do not use other water outlets when using the shower
Maximum Water Temperature too Hot/Cold	Maximum Water Temperature needs adjusting	Check the hot and cold feeds. The shower will not work if either fails.
Outlet Water Temperature too Hot/Cold	Filter/blockage	Refer to the Temperature Setting section to set your desired maximum temperature
	Installation conditions provide opposing elements	Flush through pipework and filters to ensure removal of debris and any airlocks
Intermittent water not working (because the water flow stops too low)	Isol water temperature is less than 10°C above the required blend temperature	Refer to the specification for the minimum distance required
	Intermittent water not working (because the water flow stops too low)	Adjust hot water temperature or wait for water to reheat if a stored water system is used
Intermittent water not working (because the water pressure is too low)	Hot water supply not opened	Flush through pipework and filters to ensure removal of debris and any airlocks
	Hot water supply not opened	Check the water inlet connections are the correct way around. Hot on the left, Cold on the right when viewed from the front. Rework pipework if necessary.
Water dripping from shower	This is normal for a short time after using the shower.	Refer to the specification for system requirements. Increase water pressure through the system. Contact your boiler manufacturer.
Shower does not turn as	If water continues to drip, possibly due to the cartridge	Flush through pipework and filters to ensure removal of debris and any airlocks
	Closed isolation valve	This is caused by residual water tension, the build up of water in the shower.
Shower does not turn as	Open isolation valve	Remove cartridge and clean, refer to 'Maintenance' section before starting any maintenance.
	Main water supply turned off	Open isolation valve
Shower does not turn as	Turn on main water supply	Open isolation valve

Our Guarantee	
<p>At Bristan, we want to make things as easy as possible for our customers. That's why we offer a 10-year guarantee on all our products, effective from the date of purchase, to give you peace of mind.</p> <p>To start your free guarantee enquiry, scan the QR code and explore your product.</p> <p>Alternatively visit <a href="http://www.bristan.com/register">www.bristan.com/register</a>.</p> <p>For any other queries, please call our Customer Service on 0330 026 6272 where our expert team of advisors will be able to help you any help and advice.</p> <p>Our full guarantee terms and conditions visit <a href="http://www.bristan.com/service-contacts/guarantee">www.bristan.com/service-contacts/guarantee</a>.</p>	
<p>Bristan Group Ltd.            UK: Bristan Group, R76 6GJ            Metro Centre 2 &amp; 3, 14 Blue Street            8522 Hemmott, Luton, Bedfordshire.</p>	<p>Customer Service: +44-0330 026 6272            Web: <a href="http://www.bristan.com">www.bristan.com</a>            Email: <a href="mailto:enquiry@bristan.com">enquiry@bristan.com</a></p> <p><b>BRISTAN</b> A Moce Company</p>

# BRISTAN

## Installation Instructions & User Guide

Please leave these instructions  
with the end user

ARM CTRD02 BLK (D4)

### Specifications

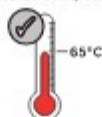
#### Dynamic Water Pressure

Min: 0.2 bar Max: 5.0 bar



Maximum Static Pressure: 10.0 bar

#### Inlet Water Temperature



Maximum Hot 65°C

#### IMPORTANT

The inlet hot water must be at  
least 10°C above the require  
blend temperature.

#### Inlet Connections



1/2" BSP

### Pack Contents

Shroud x1



Wall Arm

x1

Rubber  
Washer x1



x1 Backnut

### Tools Required for Installation



Pipe Cutter



Pencil



Adjustable Spanner



Drill



PTFE Tape



Safety  
Goggles



Electronic Detector

### Prior to Installation

All products manufactured and supplied by Britan are safe to use provided that they are installed, operated and receive regular maintenance in accordance with these instructions.

This product needs to be installed in accordance with, and meet the requirements of The Water Supply (Water Fittings) Regulations (Northern Ireland) 2009 and The Water Supply (Water Fittings) (Scotland) Byelaws 2004. For full Installation Requirements & Notes (PIN) please visit [www.wasapprovals.co.uk/approvals-directory](http://www.wasapprovals.co.uk/approvals-directory)

Isolation valves must be fitted to the inlet water supply to ensure ease of future maintenance. Before installing the product the water supply must be thoroughly flushed in order to remove any silt, solder etc. Full access must be made available for future maintenance/servicing purposes.

If power tools are used do not forget to: - Wear eye protection - Unplug equipment after use

This product must not be modified in any way as this will invalidate the guarantee.

### Spare Parts



To replace any spare  
parts for your tap, why  
not scan the QR Code or  
visit: [www.bristan.com](http://www.bristan.com)  
and search for  
your product.

# Installation



PLEASE NOTE - Products shown in these instructions are for illustration purposes only. Your product can still be installed by following these instructions.

1

Thread the arm through the wall.

Slide the shroud into place, ensuring the fitted rubber seal is tightly secured to the inside.

2

Place the rubber washer followed by the backnut onto the threaded connection.



Slide the washer towards the wall and tighten the backnut.

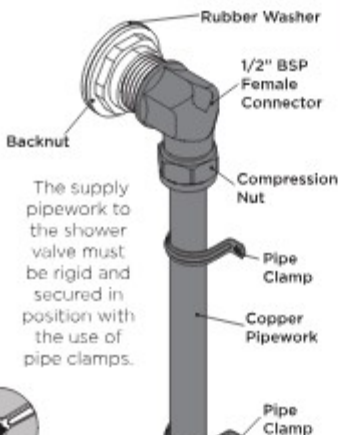


Ensure the arm is stable and secured in place.



3

Connect the outlet pipework to the shower arm using a suitable connector (not supplied).



4

Screw the shower head onto the wall arm by **HAND ONLY**.



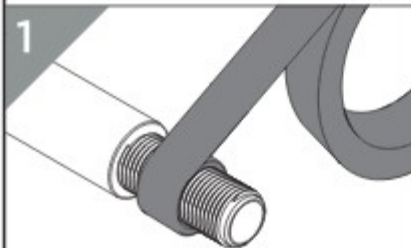
Turn on the water supply and check all joints and connections for any leaks.

## Alternative Installation



PLEASE NOTE - Products shown in these instructions are for illustration purposes only. Your riser outlet can still be installed by following these instructions.

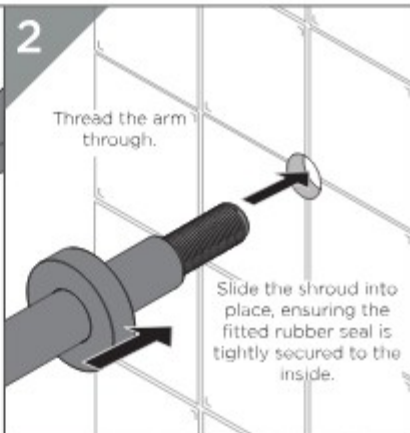
1



Use a suitable sealant that is compliant with UK Water Regulations around the thread.



2

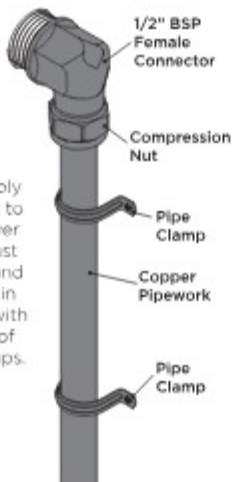


Thread the arm through.

Slide the shroud into place, ensuring the fitted rubber seal is tightly secured to the inside.

3

Connect the outlet pipework to the shower arm using a suitable connector (not supplied).



The supply pipework to the shower valve must be rigid and secured in position with the use of pipe clamps.



4

Screw the shower head onto the wall arm by **HAND ONLY**.



Turn on the water supply and check all joints and connections for any leaks.

# Cleaning

## General Cleaning

Bristan products are made from premium materials, with hand polished, PVD, EPD or electroplated finishes. Your product should be regularly cleaned with warm water, a mild pH-neutral liquid soap, and polished with a soft cloth. Any residues from soap, toothpaste, shampoos and shower gels can cause blemishes if not rinsed off straight after use.

Household bleaches and cleaners contain harsh chemicals and may damage the surface finish. Avoid using abrasive cloths, scouring pads, scrub sponges, steel wool or anything similar.

## Cleaning The Shower Head

The hardness of the water in your area will determine how often you should clean your shower head. Build up of scale in particularly hard water areas combined with constant use means you may need to clean your shower head weekly. To ensure continued performance, the shower head needs to be regularly de-scaled.

## Contact Us

**Bristan Group Ltd.**  
**A Masco Company**

**BRISTAN**

part of **BRISTAN GROUP**

**UK:** Bristan Group,  
Pooley Hall Drive,  
Birch Coppice Business Park,  
Dordon, Tamworth  
B78 1SG.

**EU:** Masco Europe S.à.r.l.  
14 Rue Strachen  
6933 Mendsdorf  
Luxembourg

**Email Us:** [enquire@bristan.com](mailto:enquire@bristan.com)  
**Website:** [www.bristan.com](http://www.bristan.com)  
**Call Us:** +44330 026 6273

## Our Guarantee

At Bristan, we want to make things as easy as possible for our customers. That's why we offer solid guarantee on all our products, effective from the date of purchase, to give you peace of mind.

To start your free guarantee simply scan the QR code and register your product.  
Alternatively visit [www.bristan.com/register](http://www.bristan.com/register).



For any other queries, please call our Customer Service on 0330 026 6273 where our expert team of advisers will be able to offer you any help and advice.

For full guarantee terms and conditions visit [www.bristan.com/service-centre/guarantees](http://www.bristan.com/service-centre/guarantees).

# BRISTAN

## Installation Instructions & User Guide

Please leave these instructions  
with the end user

FH SLRDO1 BLK (D3)

### Specifications

#### Dynamic Water Pressure

Min: 0.2 bar Max: 5.0 bar



Maximum Static Pressure: 10.0 bar

#### Inlet Water Temperature



Maximum Hot 85°C

#### IMPORTANT

The inlet hot water must be at  
least 10°C above the require  
blend temperature.

#### Inlet Connections



1/2" BSP (female)

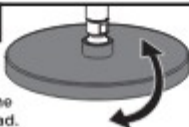
### Pack Contents

Filter  
Washer 

Fixed  
Head 

### Operation

Tilt to adjust  
the angle of the head.



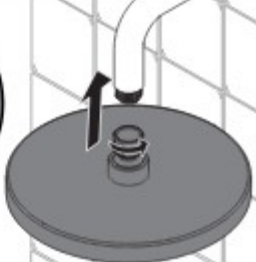
### Installation



Products shown in these instructions are for illustration  
purposes only. Your shower can still be installed and operated by  
following these instructions.



Ensure the filter  
washer is correctly  
inserted into the  
fixed head.



Screw the shower head onto the wall arm by  
**HAND ONLY**. Turn on the water supply and check all  
joints and connections for any leaks.

### Prior to Installation

All products manufactured and supplied by Bristan are safe to use provided that they are installed,  
operated and receive regular maintenance in accordance with these instructions.

This product needs to be installed in accordance with, and meet the requirements of The Water Supply (Water  
Fittings) Regulations (Northern Ireland) 2009 and The Water Supply (Water Fittings) (Scotland) Byelaws 2004.  
For full Installation Requirements & Notes (PIN) please visit [www.wasapprovals.co.uk/approvals-directory](http://www.wasapprovals.co.uk/approvals-directory)

Isolation valves must be fitted to the inlet water supply to ensure ease of future maintenance. Before installing the  
product the water supply must be thoroughly flushed in order to remove any silt, solder etc. Full access must be  
made available for future maintenance/servicing purposes.

If power tools are used do not forget to: - Wear eye protection - Unplug equipment after use

This product must not be modified in any way as this will invalidate the guarantee.

### Spare Parts



To replace any spare  
parts for your tap, why  
not scan the QR Code or  
visit [www.bristan.com](http://www.bristan.com)  
and search for  
your product.

# Cleaning

## General Cleaning

Bristan products are made from premium materials, with hand polished, PVD, EPD or electroplated finishes. Your product should be regularly cleaned with warm water, a mild pH-neutral liquid soap, and polished with a soft cloth. Any residues from soap, toothpaste, shampoos and shower gels can cause blemishes if not rinsed off straight after use.

Household bleaches and cleaners contain harsh chemicals and may damage the surface finish. Avoid using abrasive cloths, scouring pads, scrub sponges, steel wool or anything similar.

## Cleaning The Shower Head

Your Bristan shower head is equipped with rub-clean nozzles for easy cleaning. Simply rub your fingers across the rubber spray jets regularly and before you turn the shower on to remove and scale or debris.

The hardness of the water in your area will determine how often you should clean your shower head. Build up of scale in particularly hard water areas combined with constant use means you may need to clean your shower head weekly. To ensure continued performance, the shower head needs to be regularly de-scaled.

## Contact Us

**Bristan Group Ltd.**  
**A Masco Company**

**BRISTAN**

part of **BRISTAN GROUP**

**UK:** Bristan Group,  
Pooley Hall Drive,  
Birch Coppice Business Park,  
Dordon, Tamworth  
B78 1SG.

**EU:** Masco Europe S.à.r.l.  
14 Rue Strachen  
6933 Mensdorf  
Luxembourg

**Email Us:** [enquire@bristan.com](mailto:enquire@bristan.com)  
**Website:** [www.bristan.com](http://www.bristan.com)  
**Call Us:** +44330 026 6273

## Our Guarantee

At Bristan, we want to make things as easy as possible for our customers. That's why we offer solid guarantees on all our products, effective from the date of purchase, to give you peace of mind.

To start your free guarantee simply scan the QR code and register your product. Alternatively visit [www.bristan.com/register](http://www.bristan.com/register).

For any other queries, please call our Customer Service on 0330 026 6273 where our expert team of advisers will be able to offer you any help and advice.

For full guarantee terms and conditions visit [www.bristan.com/service-centre/guarantees](http://www.bristan.com/service-centre/guarantees).



# BRISTAN

## Installation Instructions & User Guide

Please leave these instructions  
with the end user

Product Code: C W05G02 BLK (D)

### Specifications

#### Working Pressure



Min: 0.2 bar Max: 10 bar

Maximum Static Pressure: 10.0 bar

#### Tools You'll Need



Adjustable spanner

#### Inlet Connections



15mm Compression Nut  
15mm Compression Nut with Wall Mount

#### Prior to Installation

All products manufactured and supplied by Britsan are made in the UK. They are installed under warranty and are covered by our 10-year guarantee.

Installation must be done by a qualified plumber or electrician to ensure safe and reliable operation.

This product must not be modified in any way as this will void the guarantee.

Full access must be made available for future maintenance / servicing purposes. This product needs to be installed in accordance with and meet the requirements of the Water Supply (Water Fittings) Regulations 1999 and Scottish Bylaws 2004.

Before using any installation please consider the following: install in a dry, well-ventilated area, away from any flammable or explosive materials, and away from any electrical wiring, cables or water supply pipes. This can be checked with the aid of an electronic detector.

If power tools are used do not forget to:  
- wear eye protection  
- always disconnect from the power

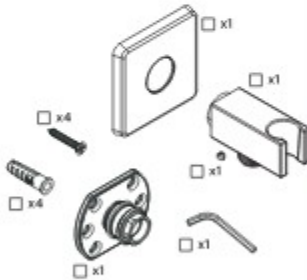
Warning! It is essential that you thoroughly flush through the shower before use. This is to ensure any manufacturing debris is removed. Failure to carry out this procedure could cause problems or damage.

If in doubt, contact a registered plumber or your Local Water Authority at the territory of the location of plumbing, electrical or firework.

The liability of Humbug, Ltd. (Britsan) and its subsidiaries.

01753 691231, Tel: 01709 412709

#### Pack Contents



#### Spare Parts

To replace any spare parts for your product why not scan the QR Code or visit [www.britsan.com](http://www.britsan.com) and search for your product.



### Installation

1



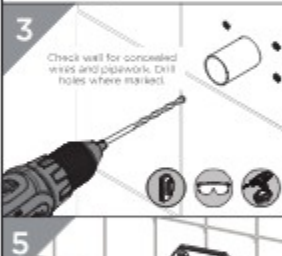
Uncrew the nut from the front of the metal backplate then remove the olive. Ensure the rubber backplate starts with the metal backplate for fitting.

2



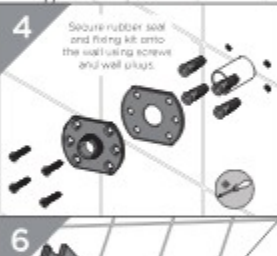
Fit plumbing to location and cut pipework to length. The distance of the pipe protruding from the wall must be 23-30mm. Place wall plate over the pipe against the (left) surface. Mark the screw holes.

3



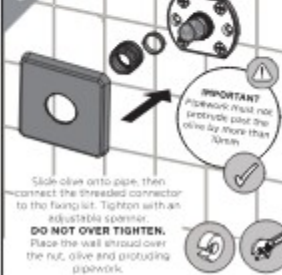
Check wall for concealed wires and pipework. Drill holes where marked.

4



Secure rubber seal and firing kit onto the wall using screws and wall plugs.

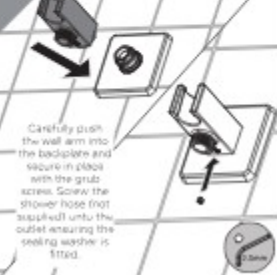
5



**IMPORTANT**  
Please do not over-tighten the olive by more than 1/2 turn.

Push olive onto pipe, then connect the threaded connector to the firing kit. Tighten with an adjustable spanner. **DO NOT OVER TIGHTEN.** Place the wall shield over the nut, olive and protruding pipework.

6



Carefully push the wall arm into the backplate and secure in place with the grub screws. Screw the shower hose (not supplied) onto the outlet ensuring the sealing washer is fitted.

## Notes

Please use this space for any notes you or your installer may have regarding the installation/plumbing of this product.

## General Cleaning

Bristan products are made from premium materials, with hand polishing and electroplated, PVD or EPD finishes.

Your taps, shower and accessories should be regularly cleaned with warm water, a mild pH-neutral liquid soap, and polished with a soft cloth. Any residues from soap, toothpaste, shampoos and shower gels can cause blemishes if not rinsed off straight after use.

Household bleaches and cleaners contain harsh chemicals and may damage the surface finish.

Avoid using abrasive cloths, scouring pads, scrub sponges, steel wool or anything similar.

## Contact Us

**BRISTAN**by MASCO GROUP

**Bristan Group Ltd.**  
A Masco Company

**UK:** Bristan Group,  
Pooley Hall Drive,  
Birch Coppice Business Park,  
Dorcan, Tainworth  
B78 15G

**EU:** Masco Europe S.à.r.l.  
14 Rue Strehen  
6933 Mersdorf  
Luxembourg

**Email Us:** [enquire@bristan.com](mailto:enquire@bristan.com)  
**Website:** [www.bristan.com](http://www.bristan.com)  
**Call Us:** +44330 026 6275

## Our Guarantee

At Bristan, we want to make things as easy as possible for our customers. That's why we offer solid guarantees on all our products, effective from the date of purchase, to give you peace of mind.

To start your free guarantee simply scan the QR code and register your product. Alternatively visit

[www.bristan.com/register](http://www.bristan.com/register).

For any other queries, please call our Customer Service on 0330 026 6275 where our expert team of advisors will be able to offer you any help and advice.

For full guarantee terms and conditions visit [www.bristan.com/service-centre/guarantees](http://www.bristan.com/service-centre/guarantees)

