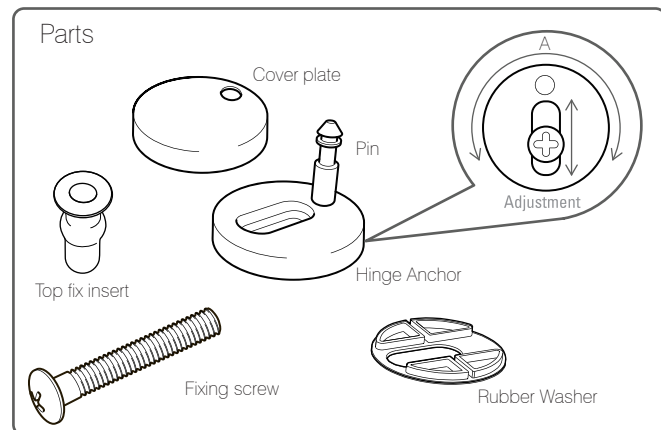


Geo Soft Close Thermoset Toilet Seat

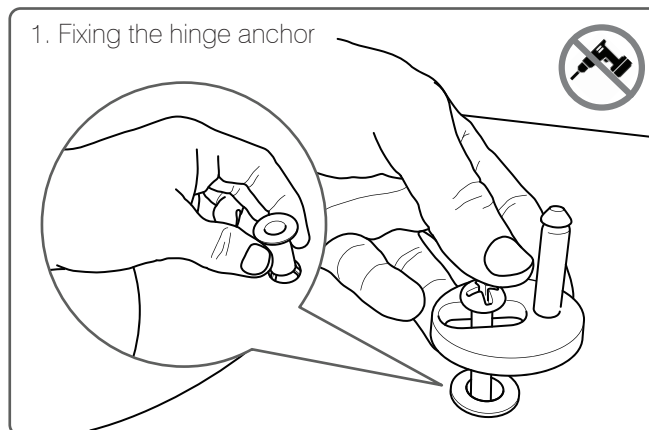
Fitting Instructions

ROPER RHODES®

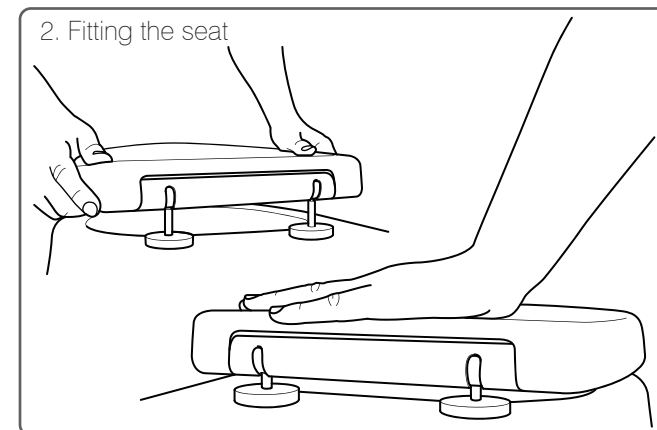
Please read carefully before attempting to fit the seat. If you are not the end user, please make sure these aftercare instructions are made available for the end customer.



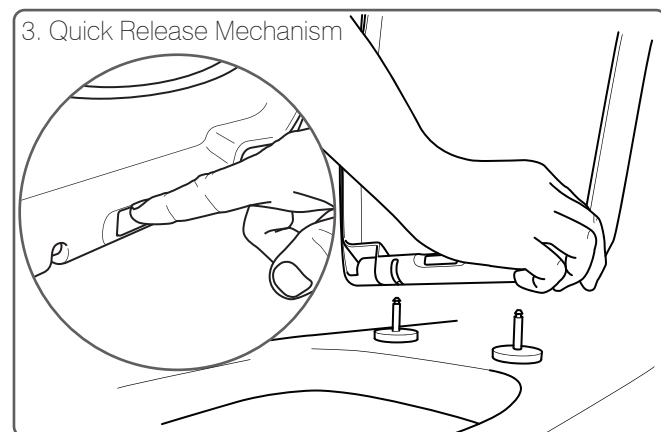
Maximum adjustment of the pin position is achieved by rotating the hinge anchor around the screw (adjustment A above). Further fine adjustment of the pin position can be achieved by sliding the screw in the slot (adjustment B).



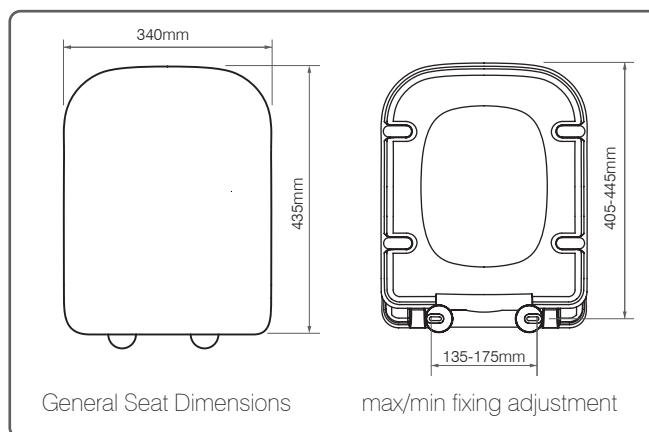
Place the top fix inserts into the fixing holes in the toilet pan. Insert the rubber seal washers into the bases of the hinge anchors. Insert the screws within the hinge anchors as shown and begin to tighten the screws until they are loosely secured, to allow for further adjustment of the seat on the pan.



Align and insert the pins into the seat hinge sockets and firmly press down until you hear them 'click' into position. Adjust the hinge anchors to make sure the seat is lined up with the edges of the pan. When the seat is positioned correctly, remove from the hinge anchors (see step 3) and fully tighten the screws in the top fix inserts. Place the cover plates over the hinge anchors. Replace the seat and click into position.



This toilet seat is designed for quick and easy removal when cleaning the toilet pan. To activate the quick release function, lift the lid and seat up and press the button in the centre of the hinges to loft off. To replace the seat, align the sockets with the pins and firmly press into position.



Safety Instructions

After a few days always check that the fixings are still tight. This is necessary as components could compress during the first few days. Never use a battery powered driver or drill - tighten by hand as tight as possible.

Please take care when handling or moving the toilet seat as careless handling may cause damage or injury. The toilet seat can be dangerous if installed incorrectly. Assembly should only be carried out by a competent person. No liability will be accepted for damage or injury caused by incorrect installation.

Aftercare Instructions



Clean surfaces with a soft damp cloth and mild soap solution



Do not scrub or scour



Do not use abrasive cleaning products



Do not stand on the lid or ring of your toilet seat

When using abrasive, corrosive or chlorine based cleaners for the toilet bowl, ensure these do not come into contact with the seat. Always keep the seat and cover in an upright position until cleaning agents are flushed away.