

# Greenwich

## SOLID WOOD TOILET SEAT

### FITTING INSTRUCTIONS

Please read carefully before attempting to fit the seat. If you are not the end user, please make sure the aftercare instructions are made available for the end user to read.

1) Rotate the base plate covers and base plates to the desired position by loosening the base plate bolts. Then, offer the seat up to the toilet pan and check whether the fixing holes on the top of the pan line up with the square holes in the base plates and the seat lines up with the overall profile of the pan. Once you are happy with the position, tighten the base plate fixing bolts fully. Adjustments can be made to the seat's position by adjusting the position on the fixing bolts and washers relative to the base plates.

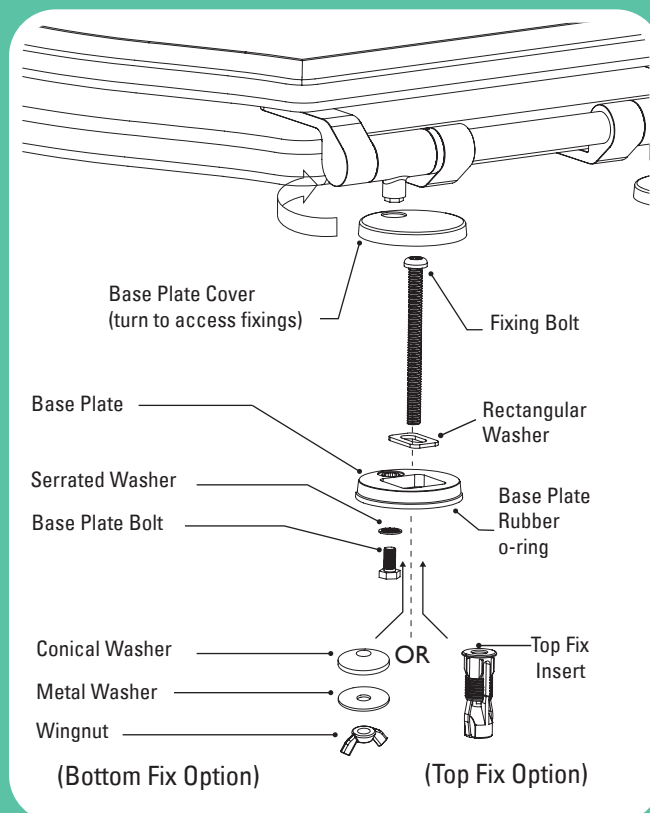
(Note: it is important that you use the non slip washers between the base plate and base plate bolts).

2) If using top fix, insert the top fix inserts into the pan fixing holes and press in firmly. Make sure the rubber o-rings are in the bottom of each base plate. Insert the rectangular washers and fixing bolts through each base plate and screw into the fixing bolts inserts. As you tighten the bolt, the underside of the fixing bolt insert will expand and pull tight against the underside of the pan. Do not overtighten at this point.

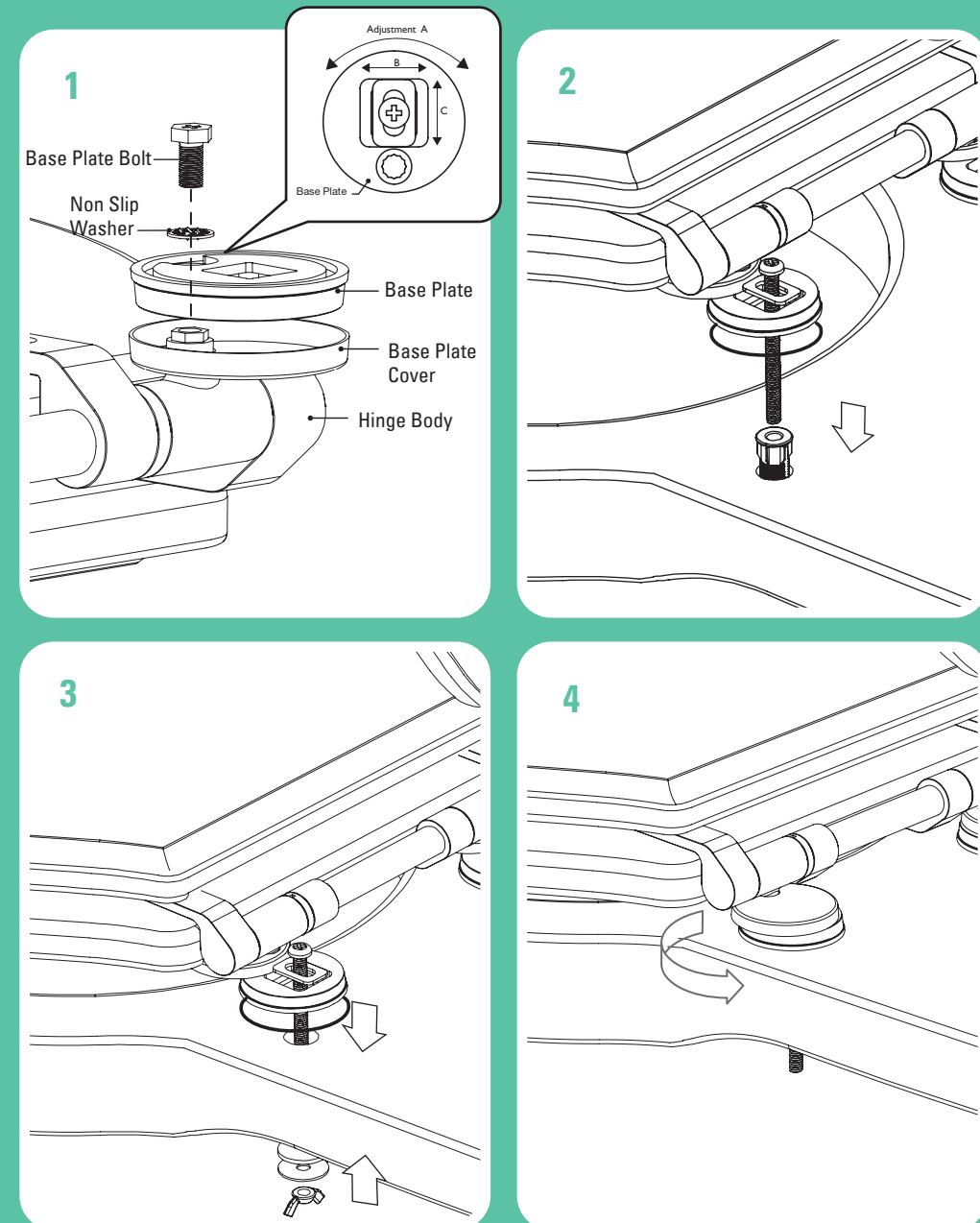
3) If you are using the bottom fix method, make sure the rubber o-rings are in the bottom of each base plate then insert the rectangular washers and fixing bolts. Pass the bolts through the pan fixing holes and screw on the conical washers, metal washers and wingnuts as shown. Do not overtighten at this stage.

4) Once you are happy with the seat's position fully tighten the fixing bolts and swivel the base plate covers over the base plates and push down to secure. Note you may need to lift the seat to an upright position to move the covers.

### PARTS / ASSEMBLY DIAGRAM

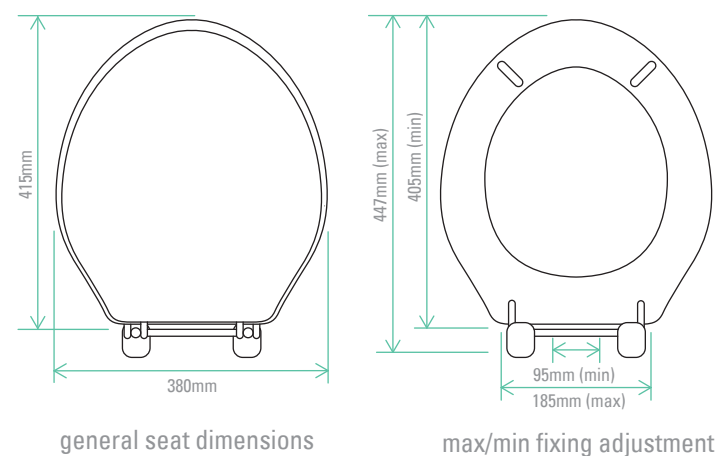


### FITTING DIAGRAM



### DOES IT FIT?

Please can you measure before opening the pack



### AFTERCARE INSTRUCTIONS



Clean surfaces with a soft damp cloth and mild soap solution



Do not use abrasive cleaning agents on the seat. The seat must be kept in an upright position until any WC cleaner has been flushed away to prevent discolouring



Do not scrub or scour



Do not stand on the lid or ring of your toilet seat

**ROPER RHODES**

Roper Rhodes Limited  
Brassmill Lane Trading Estate, Bath, BA1 3JF

t. 01225 303 900

f. 01225 448 877

e. sales@roperrhodes.co.uk

w. www.roperrhodes.co.uk