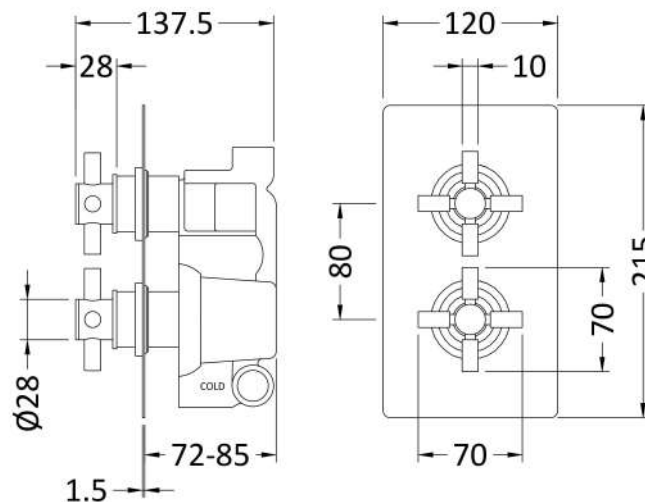
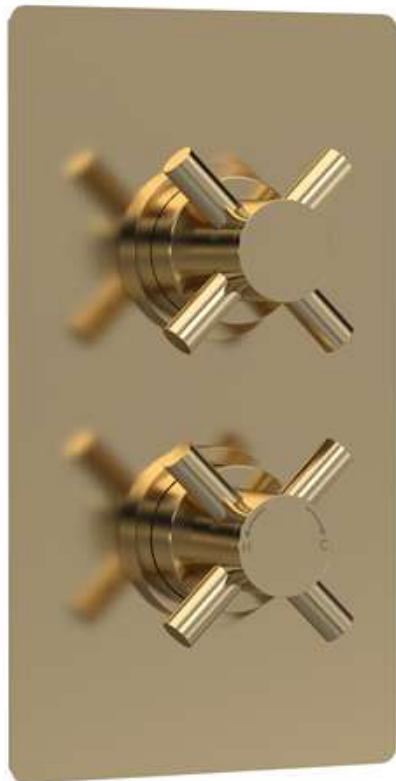


Sales Code: KRI8207

Description: Kristal Twin Conc Thermo Valve Div



**Product Dimensions**

|                   |      |
|-------------------|------|
| Length (mm):      |      |
| Width (mm):       | 120  |
| Height (mm):      | 215  |
| Depth (mm):       | 138  |
| Nett Weight (kg): | 3.05 |

**Packaging Dimensions**

|                    |      |
|--------------------|------|
| Length (mm):       | 1200 |
| Width (mm):        | 100  |
| Height (mm):       | 90   |
| Gross Weight (kg): | 3.05 |

**Packaging Data**

|               |                     |
|---------------|---------------------|
| Box Colour:   | White Cardboard Box |
| Box Qty:      | 0                   |
| Label Size:   | 0 x 0               |
| Label Colour: | White Label         |
| Label Qty:    | 0                   |

**Outer Box Dimensions (If Applicable)**

|                    |               |
|--------------------|---------------|
| Length (mm):       |               |
| Width (mm):        |               |
| Height (mm):       |               |
| Depth (mm):        |               |
| Gross Weight (kg): | 28            |
| Barcode:           | 5056462673929 |

**Product Details**

|  |                       |
|--|-----------------------|
| Country of Origin:   | United Kingdom        |
| Fitting Instruction:   | No                    |
| Product Material:  | Brass/ABS             |
| Mount Type:  | Recessed              |
| Outlet Elbow Supplied:   | No                    |
| Easy Clean:  | Not Applicable        |
| Head Included:   | No                    |
| Handset Included:  | No                    |
| Body Jets Included:  | No                    |
| No of Body Jets:   | Not Applicable        |
| Operating Pressure (bar):  | 0.5                   |
| Valve/Cartridge Type:  | 1/4 Turn Ceramic Disc |
| Flow Rates (L/min): 0.1 bar: N/A 0.5 bar: 13 1 bar: 17 2 bar: 24 3 bar: 27 |                       |
| TMV2 Approved: No  | Approval No: N/A      |
| TMV3 Approved: No  | Approval No: N/A      |
| WRAS Approved: No  | Approval No: N/A      |
| Head Function:   | Not Applicable        |
| Handset Function:  | Not Applicable        |
| Body Jet Info:   | Not Applicable        |
| Pipe Size:   | 15 mm & 22 mm         |
| Pipe Centres:  | N/A                   |
| Colour/Finish:   | Brushed Brass         |
| Hose Included:   | Not Applicable        |
| No. of Outlets:  | 2                     |