

CEILING panel

- Decorative PVC panels are available in a stunning range of decors.
- Can be up to 50% cheaper than conventional tiling.

FOR CEILING WALLS & SHOWERS

Decorative PVC ceiling and wall panels

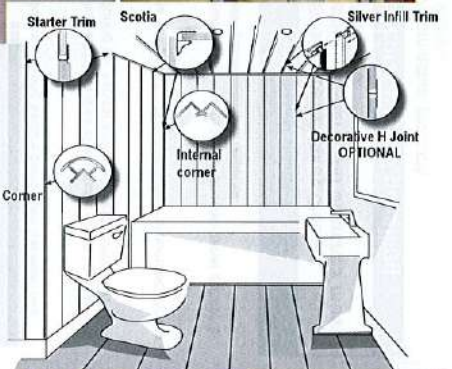
- 2700mm Long x 250mm Wide tongue and groove panels.
- 2700mm long by 200mm wide 2-strip panels.
- Decorative PVC panels for all walls and ceilings in showers, bathrooms, kitchens, conservatories, extensions and utility rooms.
- 100% waterproof PVC core.
- Light and easy to fit.
- No wet trades required.
- Suitable for both wet and dry areas.
- Non-porous, Hygienic, mould free.
- Virtually maintenance free wipe clean surface.

- No tiling or grouting to discolour or leak.
- Excellent insulation and sound proofing.

FULL RANGE OF ACCESSORIES:

- Silver décor strips.
- Recyclable P.V.C.
- A superb range of gloss finishes.
- A full range of P.V.C. finishing mouldings are available in bright silver black and white.

To check - before and during installation for visible defects. As is general practice installed panels and extrusions are assumed to be accepted.



Class 1 Fire rated - SUITABLE FOR COMMERCIAL AND DOMESTIC USE

ASSEMBLY INSTRUCTIONS - read **BEFORE** installation

Before installation, the panels should be allowed to acclimatise in the room where they are to be installed for 24-48 hours.

Decorative PVC panels can be fixed directly to the wall if the surface is relatively even and if the wall is dry, using shower panel adhesive, or fix on to a frame of wooden batons.

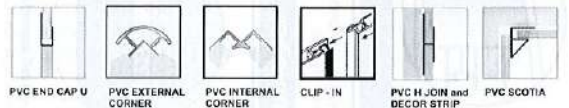
When fitting decorative PVC panels to the ceiling, always fix to a frame of wooden batons.

When fixing decorative PVC panels to wooden batons, the panels can be fixed through the extending backplate fixing tongue using staples with a staple gun, by hammer with panel pins / nails, with screws, or with panel adhesive.

When fixing to the ceiling, adhesive should not be used, unless as an additional fixing combined with staples, panel pins / nails, or screws.

- To make a wooden frame, strap the wall with wooden battens placed approximately every 30-40cm according to the direction of assembly. If panels are assembled vertically, strap in the opposite direction horizontally, and vice-versa. If panels are assembled diagonally, the batons can be installed vertically, horizontally, or at right angles to the panels.
 - Start with the preferred end moulding – end cap U, internal, external, or scotia. Insert the tongue side of the panel into the moulding.
 - Glue the panel, or panel-pin (nail), staple or screw the first panel through the backplate fixing tongue opposite the starting side.
 - Insert the tongue of the next panel into the groove and continue the installation of the panels in the same manner.
 - Use appropriate PVC mouldings to finish all corners and ends.
 - DECORATIVE CLIP-IN SILVER MOULDINGS:** If a decorative clip-in silver moulding is to be used, clip this into the groove before inserting the second and subsequent panels, then glue the panel, or panel-pin (nail), staple or screw through the panel backplate fixing tongue.
 - DECORATIVE H JOINT MOULDINGS:** If a decorative H joint moulding is used, insert the H joint before fixing the backplate of the first panel and before inserting the second and subsequent panels, then glue the first panel and H Joint, or panel-pin (nail), staple or screw through the H Joint backplate fixing tongue to fix both the H Joint and first panel. Before inserting an H Joint, the panel tongues should first be trimmed off both sides of the panels.
- SEALING:** Seal the panels with decorative PVC panel silicone sealant between panel joints and mouldings / profiles and all ends if the panels are to be installed in a wet area such as in a shower or around a bath.
- CUTTING:** When cutting with a precision handsaw, cut with the decorative face of the panel upwards. When using an electric saw cut the panel with the decorative face of the panel downwards.

HOW TO FIT PVC PROFILES



P.V.C. PROFILES and decor strips available in lengths of 2.7m



PVC Clip-In and H-Joint Strips
Silver decor strips for Tongue and Groove panelling are available in Bright Silver in two widths.

It may be necessary to trim off the panel tongues before fitting H-joint decor strips.

FIXING OF PANELS

DECORATIVE PVC PANELS CAN BE FIXED WITH:

- STAPLES
- PANEL PINS
- SCREWS
- PANEL ADHESIVE

PASS TO END USER

PVC PANEL MAINTENANCE

The hardwearing surface of panelling can be hygienically cleaned with Shower-panel Spray Cleaner which is a mild non-abrasive cleaner with an anti-bacterial agent. Abrasive cleaners and bleaches must NOT be used on Shower-panel panelling. Do not expose to direct sunlight, or temperatures in excess of 60°C. When fitting lighting if in doubt consult the lighting manufacturer.

Please check panel batch numbers match before installing decorative PVC panelling.

Due to the limitations of the printing process colours may vary from actual products.
Rights are reserved to alter the technical specifications in this brochure.

CEILING panel

- Decorative PVC panels are available in a stunning range of decors.
- Can be up to 50% cheaper than conventional tiling.

FOR CEILING WALLS & SHOWERS

Decorative PVC ceiling and wall panels

- 2700mm Long x 250mm Wide tongue and groove panels.
- 2700mm long by 200mm wide 2-strip panels.
- Decorative PVC panels for all walls and ceilings in showers, bathrooms, kitchens, conservatories, extensions and utility rooms.
- 100% waterproof PVC core.
- Light and easy to fit.
- No wet trades required.
- Suitable for both wet and dry areas.
- Non-porous, Hygienic, mould free.
- Virtually maintenance free wipe clean surface.

- No tiling or grouting to discolour or leak.
- Excellent insulation and sound proofing.

FULL RANGE OF ACCESSORIES:

- Silver décor strips.
- Recyclable P.V.C.
- A superb range of gloss finishes.
- A full range of P.V.C. finishing mouldings are available in bright silver black and white.

To check - before and during installation for visible defects. As is general practice installed panels and extrusions are assumed to be accepted.



Class 1 Fire rated - SUITABLE FOR COMMERCIAL AND DOMESTIC USE

ASSEMBLY INSTRUCTIONS - read **BEFORE** installation

Before installation, the panels should be allowed to acclimatise in the room where they are to be installed for 24-48 hours.

Decorative PVC panels can be fixed directly to the wall if the surface is relatively even and if the wall is dry, using shower panel adhesive, or fix on to a frame of wooden batons.

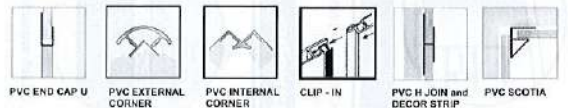
When fitting decorative PVC panels to the ceiling, always fix to a frame of wooden batons.

When fixing decorative PVC panels to wooden batons, the panels can be fixed through the extending backplate fixing tongue using staples with a staple gun, by hammer with panel pins / nails, with screws, or with panel adhesive.

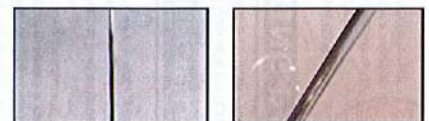
When fixing to the ceiling, adhesive should not be used, unless as an additional fixing combined with staples, panel pins / nails, or screws.

- To make a wooden frame, strap the wall with wooden battens placed approximately every 30-40cm according to the direction of assembly. If panels are assembled vertically, strap in the opposite direction horizontally, and vice-versa. If panels are assembled diagonally, the batons can be installed vertically, horizontally, or at right angles to the panels.
 - Start with the preferred end moulding – end cap U, internal, external, or scotia. Insert the tongue side of the panel into the moulding.
 - Glue the panel, or panel-pin (nail), staple or screw the first panel through the backplate fixing tongue opposite the starting side.
 - Insert the tongue of the next panel into the groove and continue the installation of the panels in the same manner.
 - Use appropriate PVC mouldings to finish all corners and ends.
 - DECORATIVE CLIP-IN SILVER MOULDINGS:** If a decorative clip-in silver moulding is to be used, clip this into the groove before inserting the second and subsequent panels, then glue the panel, or panel-pin (nail), staple or screw through the panel backplate fixing tongue.
 - DECORATIVE H JOINT MOULDINGS:** If a decorative H joint moulding is used, insert the H joint before fixing the backplate of the first panel and before inserting the second and subsequent panels, then glue the first panel and H Joint, or panel-pin (nail), staple or screw through the H Joint backplate fixing tongue to fix both the H Joint and first panel. Before inserting an H Joint, the panel tongues should first be trimmed off both sides of the panels.
- SEALING:** Seal the panels with decorative PVC panel silicone sealant between panel joints and mouldings / profiles and all ends if the panels are to be installed in a wet area such as in a shower or around a bath.
- CUTTING:** When cutting with a precision handsaw, cut with the decorative face of the panel upwards. When using an electric saw cut the panel with the decorative face of the panel downwards.

HOW TO FIT PVC PROFILES



P.V.C. PROFILES and decor strips available in lengths of 2.7m



PVC Clip-In and H-Joint Strips
Silver decor strips for Tongue and Groove panelling are available in Bright Silver in two widths.

It may be necessary to trim off the panel tongues before fitting H-joint decor strips.

FIXING OF PANELS

DECORATIVE PVC PANELS CAN BE FIXED WITH:

- STAPLES
- PANEL PINS
- SCREWS
- PANEL ADHESIVE

PASS TO END USER

PVC PANEL MAINTENANCE

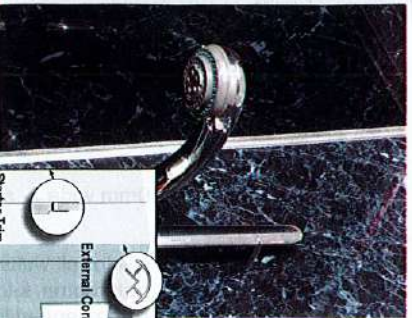
The hardwearing surface of panelling can be hygienically cleaned with Shower-panel Spray Cleaner which is a mild non-abrasive cleaner with an anti-bacterial agent. Abrasive cleaners and bleaches must NOT be used on Shower-panel panelling. Do not expose to direct sunlight, or temperatures in excess of 60°C. When fitting lighting if in doubt consult the lighting manufacturer.

Please check panel batch numbers match before installing decorative PVC panelling.

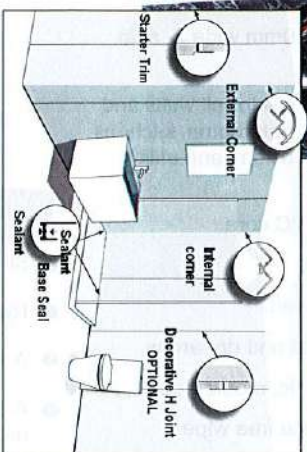
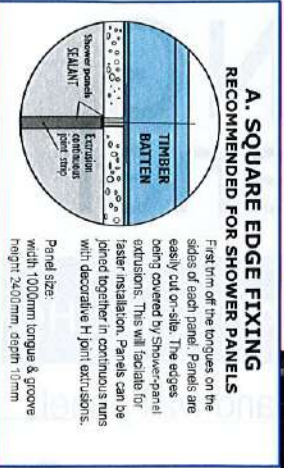
Due to the limitations of the printing process colours may vary from actual products.
Rights are reserved to alter the technical specifications in this brochure.

SHOWER panel

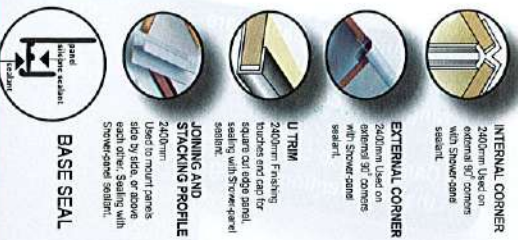
**1000mm WIDE
PVC SHOWER
& WALL PANELS**



**INSTALLER
INSTALLATION
INSTRUCTIONS**
Please read this
leaflet thoroughly
BEFORE installation
PASS TO END USER



ALUMINIUM & P.V.C. PROFILES



**EXTRUSIONS:
THE SIDES OF
THE PANELS
SHOULD BE
TRIMMED TO
FORM A TIGHT
FIT**

**ALUMINIUM
PROFILES**

- Bright Silver
- Satin Silver
- Gloss White

**P.V.C
PROFILES**

- White
- Bright Silver

MAINTENANCE

The hardwearing surface of panelling can be hygienically cleaned with Shower-panel Spray Cleaner which is a mild non-abrasive cleaner with an anti-bacterial agent. Abrasive cleaners and bleaches must NOT be used. Do not expose to direct sunlight, or temperatures in excess of 60°C.

Please check panel batch numbers match before installing decorative PVC panelling.

Due to the limitations of the printing process colours may vary from actual products.
Rights are reserved to alter the technical specifications in this brochure.

**BENEFITS OF USING
SHOWER-PANEL
SEALANT**

Shower-panel Sealant is for use with panelling and for general sanitary use.

- Shower-panel Sealant forms a strong secure bond even between two non-porous surfaces.
- Shower-panel Sealant has a high degree of elasticity, which ensures that the bond remains firm during the natural expansion and contraction of the panelling.
- Shower-panel Sealant is designed for high pressure and pumped shower systems.
- For a wide panel, approximately 1 cartridge of Shower-panel adhesive and 1 cartridge of Shower-panel sealant is required.

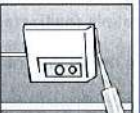
**ADHESIVES
SEALANTS AND
CLEANERS**

Before installation, the panels should be allowed to acclimatise in the room where they are to be installed for 24-48 hours.

FIXING OF PANELS TO BATTENS

The panels should be fixed direct to battens using shower-panel adhesive. It is recommended that the panels be fixed to battens to provide an air space behind the panels. Treated timber battens approximately 45mm x 21mm should be fixed horizontally with one at the head and base of the panels with additional battens at a recommended distance of 500mm apart. They should be plumb and parallel to each other to give a solid ground for fixing the panels with shower-panel adhesive. Wash hand basins, towel rails and other heavy items should have additional battens behind them to give a secure fixing.

PANEL PREPARATION



INSTALLERS

To check - before and during installation for visible defects. As is general practice installed panels and extrusions are assumed to be accepted.

TONGUE AND GROOVE PANEL INSTALLATION BASE SEAL Moulding RECOMMENDED

WHERE TO START: Start at the corner (furthest from the door, panel in both directions) around the room. The last panel is fitted above the doorway, placed in position tongue first and swung into position. All panels must be correctly aligned and plumb, allowing for 3mm expansion gaps. Fix panels to battens using shower-panel adhesive. Seal all panel joints using shower-panel sealant.

**SQUARE EDGE SHOWER PANEL
INSTALLATION
BASE SEAL Moulding RECOMMENDED**

TWO PANEL SHOWER ENCLOSURE

First cut off the tongue on each panel edge. The shower tray must be fitted hard against or cut into the wall. Cut the panels and profiles to size. First fix a shower-panel internal profile in position against the battens ensuring that it is plumb. Apply a generous bead of our shower-panel sealant into profile and insert panels. Fix panels to battens using our shower-panel adhesive. Allow for 3-4mm expansion gaps, filled with shower-panel sealant.

BEGIN PANELLING: First fix a internal corner profile in position ensuring that it is plumb. Apply shower-panel adhesive to the recess of the profile. Apply shower-panel adhesive to the battens. Insert the first panel after removing the smaller tongue, or cutting to size. Then continue to panel away from the corner in both directions, fixing panels to battens with shower-panel adhesive, and sealing joints with shower-panel sealant. Allow for 3-4mm expansion gaps, filled with shower-panel sealant.

THREE PANEL SHOWER ENCLOSURE:

Two internal profiles are required. First panel is fitted as for the two panel shower enclosure. Put an internal corner profile onto the edge of second panel, and apply Shower-panel adhesive to the battens. Insert other edge into profile already attached to the wall, and swing second panel into place forming back of enclosure. Fix profile to wall, insert third panel and glue to wall. Ensure a generous bead of shower-panel adhesive is applied into all the profiles. Allow for 3-4mm expansion gaps, filled with shower-panel adhesive.

CONTINUE PANELLING: Continue panelling around the room fixing each panel to the battens with shower-panel adhesive, and/or screws through the back lip of grooved edge. Seal tongue and groove joints using shower-panel sealant. Use internal and external corner profiles, sealing with shower-panel sealant, where appropriate.

FINISHING TOUCHES U-TRIM:

First cut panel edges with U-Trim applying a generous bead of shower-panel sealant into the U-Trim. Seal all gaps around the tray with shower-panel sealant prior to installing the shower door or side panel.

INSTALLERS

Note: Do not fit and set panels directly on top of bath or shower tray - allow 3-4mm expansion gaps and fill with Shower-panel sealant.

SQUARE EDGE PANELLING FOR CONTINUOUS WALL INSTALLATIONS

INSTALL IN A SIMILAR MANNER TO TONGUE AND GROOVE PANELLING, USING THE 'H' CONTINUOUS RUN DECORATIVE 'JOINING AND STACKING' PROFILE TO JOIN PANELS, APPLYING A GENEROUS BEAD OF SHOWER-PANEL SEALANT INTO THE PROFILE.

FIXING PANELLING IN WET AREAS

