

## ORIGINAL RANGE CURVED SLIDER - CENTRE ACCESS Installation Instructions

Please read these instructions before installing, as incorrect fitting will invalidate the guarantee. Carry out each stage before moving onto the next. **Do not dispose of packaging**, no claims for damaged or missing parts will be accepted if the packaging has been disposed of.

If you are unsure about these instructions please contact Kudos Shower Products:

**Customer Service Helpline: 01539 564040**

### TOOLS REQUIRED

- 1) Flat-Headed Screwdriver
- 2) Pozi-Drive Screwdriver
- 3) Spirit Level
- 4) Tape Measure
- 5) Hacksaw
- 6) Silicone Sealant
- 7) 4mm & 2.5mm Allen Key (included)
- 8) Electric Drill
- 9) 7mm Drill Bit (masonry)

### IMPORTANT

Check appearance of shower enclosure - any defects must be reported to Kudos Shower Products before assembly/installation. Claims for imperfections will only be accepted prior to assembly/installation.

Check the enclosure adjustment sizes are suitable for your installation.

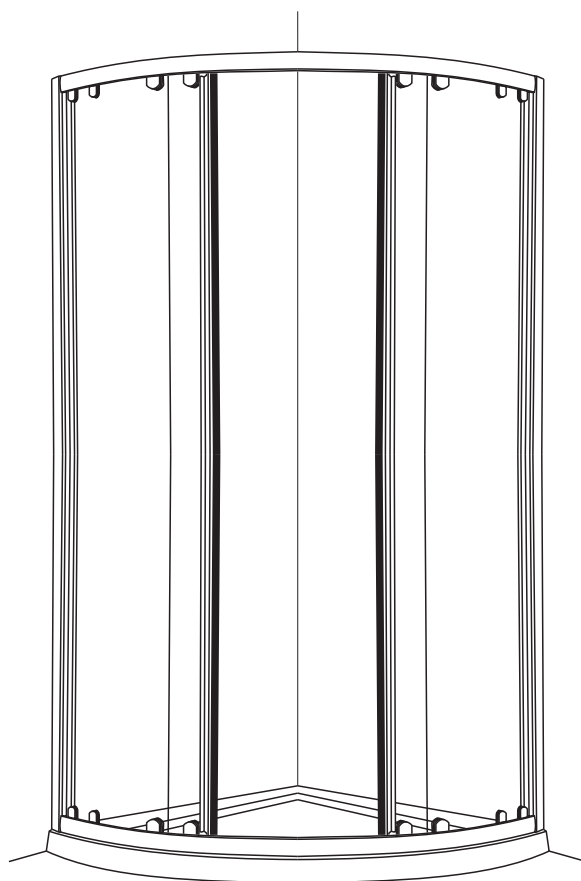
Ensure shower tray is level in all directions.

Prior to tiling any gap or crevice between the rim of the tray and the wall must be filled with sealant flush with the rim of the tray - **see Fig.1**

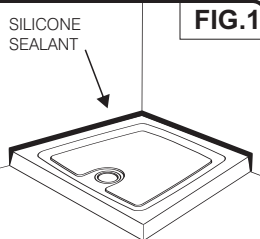
Waterproof the walls using ceramic tiles/shower panels etc. before installation.

Fully seal between tiles/shower panels and the tray **BEFORE** installing the enclosure - **see Fig.2**

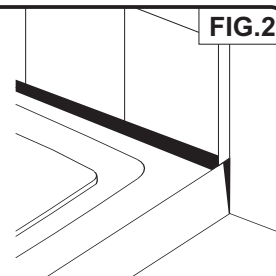
Use care when drilling into the walls to avoid hidden pipes or electric cables.



Once the tray is installed but **before** the tiles are fitted any crevice between the tray and the walls **must** be filled with silicone sealant flush with the top of the tray.



Once the walls have been tiled but **before** the enclosure is installed, the tiles **must** be silicone sealed to the tray all of the way around in one continuous bead.



### CLEANING: THESE INSTRUCTIONS TO BE LEFT WITH THE CUSTOMER

**GENERAL** - use only warm soapy water and damp cloth/ sponge on a regular basis.

Do not use abrasive scouring powders, chemicals or aerosol cleaners - these may result in damage to the surfaces, in particular, the plated component parts.

### LIFESHIELD

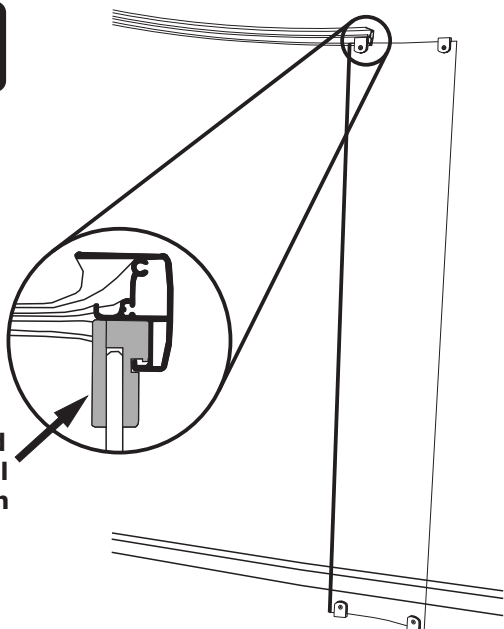
Your Kudos Product is pre-treated with Life Shield on the inside surfaces only. While this makes cleaning the glass a lot easier and helps prevent the build up of harmful lime-scale and soap deposits the glass still needs to be maintained on a regular basis. We recommend the use of a detergent free cleaner on the glass as harsh detergents and abrasives can damage the coating (A 50/50 mix of Vinegar and Water works well!!!)

**DO NOT** use abrasive cleaners or abrasive scrubbing equipment for cleaning!!

**DO** use a squeegee to remove remaining droplets of water from glass after showering, any build up of residue can be removed easily using an appropriate cleaner and agitation from soft cleaning equipment

1

Fixed Panel Patch



**1 STAND ONE FIXED** panel of glass (glass piece without handle), upright against a wall with inside of glass facing you.

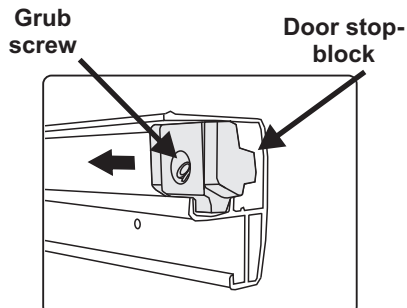
**2 FIT 1st CURVED RAIL** to fixed panel glass by engaging patches into the fixed panel channel. Place a cloth between rail and wall to protect the rail

**TIP** Apply vaseline / lubricant to rail channel and also loosen the patch fixings slightly to ease fitting.

2

**INSERT FOUR STOP-BLOCKS** into the 'outer' channel in the 2nd rail - one at either end and two in the middle. Do not tighten grub screw at this stage.

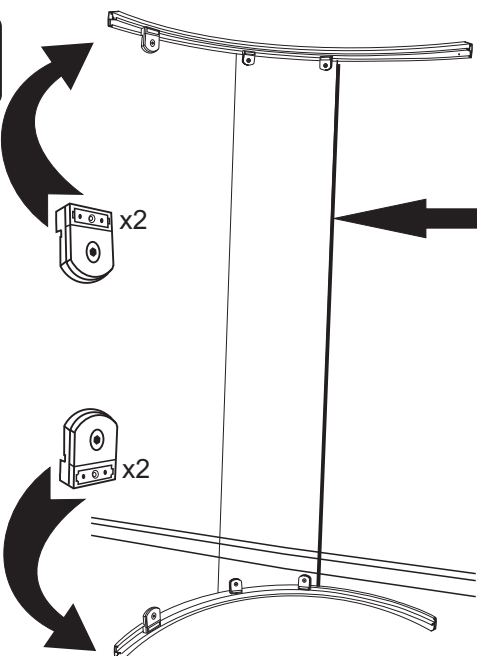
**THIS WILL BE THE TOP RAIL**



3

x2

x2



**1 CAREFULLY** Turn the glass with rail attached upside down and repeat instruction number 1 with the 2nd rail

**2 NOTE** which edge of glass the rigid plastic seal is on, this will go to the wallpost

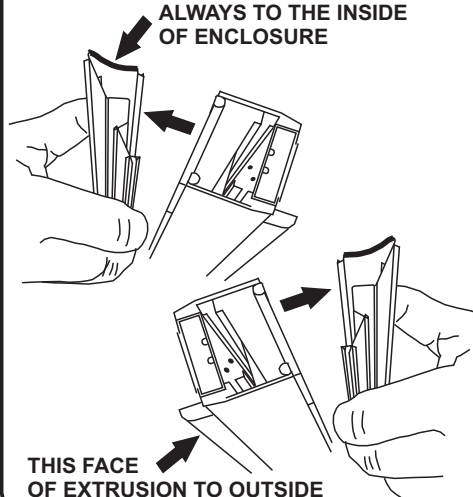
**3 REMOVE** the patches from the 2nd fixed panel glass and insert into the curved rails from the opposite end to the rigid seal (2 top and 2 bottom)

**TIP SCREW** The inner plates back onto the patches in the rail to help prevent losing them

4

**REMOVE ANGLED CONNECTOR** posts from both wallposts. These simply un-clip from the back of each wallpost.

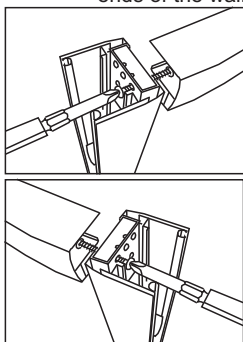
**THIS CURVED SURFACE ALWAYS TO THE INSIDE OF ENCLOSURE**



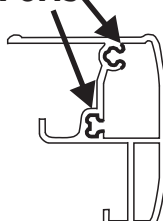
**THIS FACE OF EXTRUSION TO OUTSIDE**

5

**FIX WALLPOSTS TO** curved rails, using **No. 6 x 30mm** long screws found in the Assembly Screw Pack. Ensure that the curved face of the clip in extrusions are to the outside, insert each screw through the relevant holes in plastic spacer blocks and into each screw port, two screws for each corner of frame, ensuring these are fully tightened. Also ensure that the curved rails are fitted flush with ends of the wallpost.

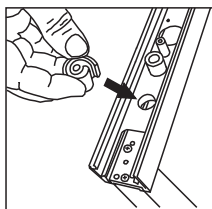


**Screw Ports**

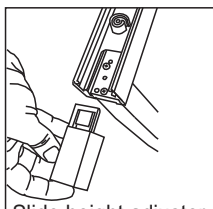


6

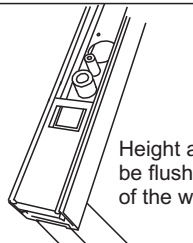
**INSERT HEIGHT ADJUSTERS** into the bottom of each wall post.



Insert spiral cam into the hole. Orientate cam as shown



Slide height adjuster into the wall post and over spiral cam, it will "click" when engaged

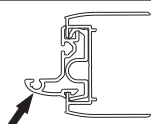


Height adjuster should be flush with the bottom of the wall post

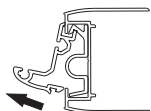
7

**REMOVE CLIP IN EXTRUSIONS** from both wallposts, ensure the glass panel is moved away from both wallposts then follow the sequence below

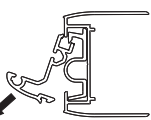
**1** Apply pressure to the outside face of the extrusion



**2** Release the outer edge of the extrusion over its entire length



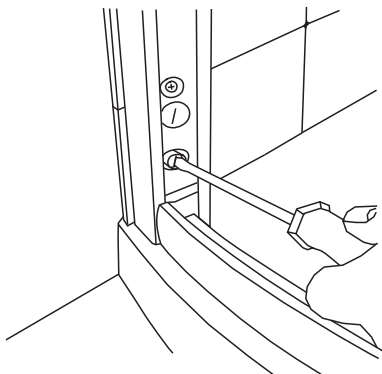
**3** Lift the extrusion out and away from the wallpost, repeat this on other wallpost



8

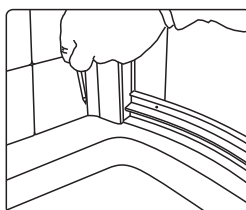
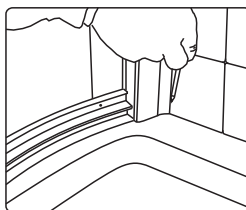
**REFIT THE ANGLED** connector posts that were removed in Stage 4 and carefully offer the enclosure onto tray and position centrally. Set bottom curved rail level if necessary by turning the height adjuster screw (clockwise to raise).

**USE SPIRIT LEVEL TO ENSURE ACCURACY**



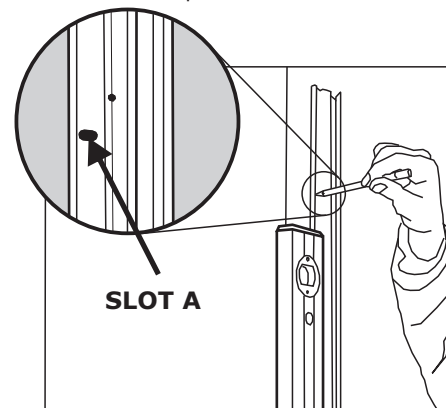
9

**MARK POSITION OF** connector posts onto walls near bottom (if height adjusters have been utilised, mark position of bottom of connector posts onto walls).



10

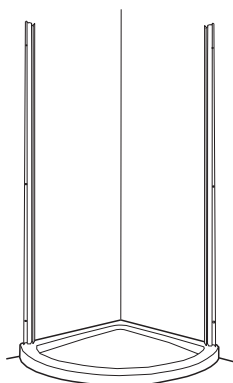
**REMOVE CONNECTOR POSTS** from unit and re-position these to marks made on walls. Using spirit level to ensure posts are vertical, mark through 3 pre-drilled slots 'A' in each post.



Ensure curved face of angled connectors are to inside as shown in Stage 4, mark and drill in the centre of each slot.

11

**DRILL HOLES** in walls using 7mm masonry drill and fit wall plugs supplied, or fixings suitable for the construction of your wall.



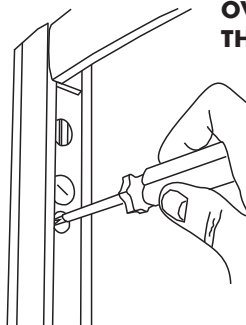
**TIP** Apply a bead of sealant around the 6 drilled holes before fitting the Angled Connector Posts

**FIX CONNECTOR POSTS** to walls using six No. 8 x 30mm long panhead screws provided (3 each post). **These posts can be moved either side or straightened without re-drilling by utilising the slots 'A'.**

12

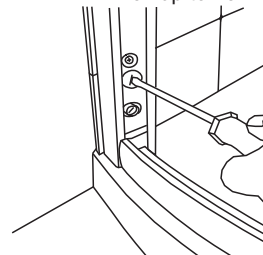
**FIX UNIT TO** connector posts, ensuring that the wallposts **fully engage** into the connector posts. Fix unit to connector posts using six No.8 x 30mm long panhead screws, through wall post mouldings into pre-drilled holes in connector posts (3 each side).

**DO NOT OVERTIGHTEN THESE SCREWS.**



13

**CHECK THE DOOR** frame is level - each wallpost has 3 nylon adjustment screws. Turning these screws in an anti-clockwise direction forces the outer wallpost channel & frame away from the wall up to **15mm**.



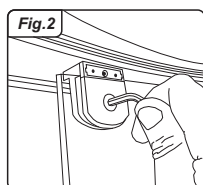
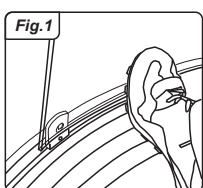
1. Adjust wallposts at bottom until even gap is achieved between curved rail and curve on tray.

2. Adjust middle and top screws to ensure wallposts are vertical and straight.

**TIP** Use Clip-in extrusion as a straight edge

14

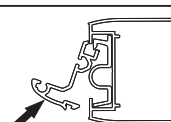
**FIT 2ND FIXED PANEL GLASS** to the pre fitted patch fixing in the top and bottom rails. Space the patches so that they are about the same distance apart as the holes in fixed panel glass, remove the inner patch covers and place on the top rail, lift glass panel onto the bottom patches and hold in place using your foot **Fig.1**, secure the top patches to the glass using the Allen key Screws **Fig.2**, and then repeat for the bottom patches.



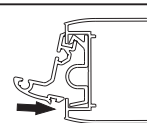
15

**RE-FIT CLIP-IN EXTRUSIONS**, which were removed in stage 7. Ensure the leading edge is properly located along full height before pressing the clip-in extrusion into the wallpost, as it will not locate properly if twisted.

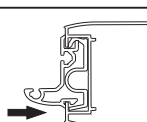
1 Locate the leading edge fully over entire height of extrusion



2 Push the outer edge in towards the wall post

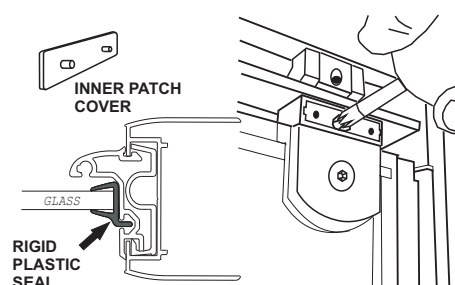


3 CLICK the outer edge of the extrusion back into the wall post



16

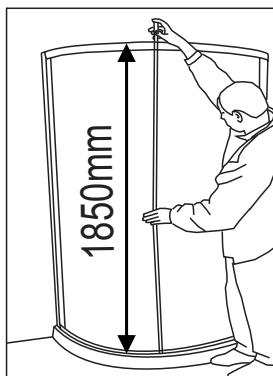
**SLIDE FIXED PANELS** back to the wall posts, ensuring the 'lip' on the rigid plastic seal slots fully home into the groove on the clip-in extrusion along its entire length. Secure the 4 patches closest to the wall post to the rail, through the pre-drilled holes in the rail using the **Four** 6's x 20mm panhead screws provided, if the holes do not line up you can loosen the patch fixing to the glass and move the complete patch. Fit the inner patch covers and ensure all allen key screws are fully tightened.



# 17

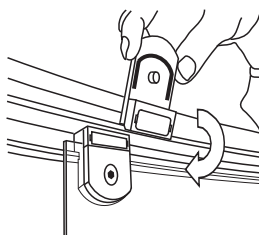
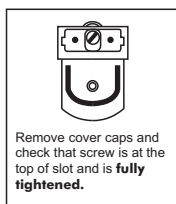
**CHECK THE OVERALL** height of unit. At the centre this should be 1850mm (this is the distance from the top of the top rail to the bottom of the bottom rail).

If not, loosen the fixed panel patch fitting screws. Lift or lower the rail at the centre and re-tighten.



# 18

**TO FIX THE** sliding doors, use 4mm allen key supplied and remove roller patch fittings from glass. Fit these patch fittings into TOP rail upsidedown, fitting the wheel into top channel and then turning upright again.

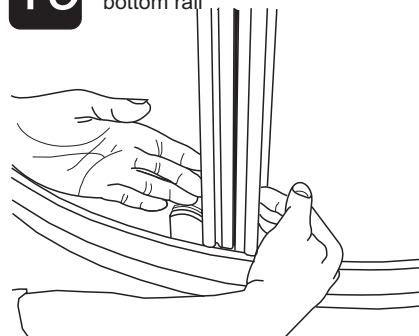


Feed the glass carefully into the unit and match up the top holes with the roller patches. Screw the inner cover back on. **Ensure the shoulders of the patch fittings are tight against the top edge of the glass.**

**TIP** Have allen key, 'roller' patch inner covers and screws on your person before fitting sliding door. Use foot to support door.

# 19

**Depress levers** on bottom patches and secure sliding glass into the bottom rail

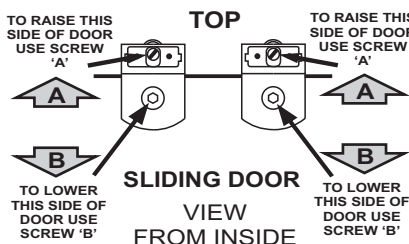


**LUBRICATE BOTTOM LEVERS** with vaseline and slide the doors to meet each other. The magnets should be in contact with each other along their entire length. If not the doors can be adjusted as follows....

# 20

**ADJUST HANGING OF** door. There are two methods to adjust the hanging of the door, shown below: A and B.

**PLEASE ENSURE THAT AFTER ADJUSTMENT ALL SCREWS ARE FULLY TIGHTENED**



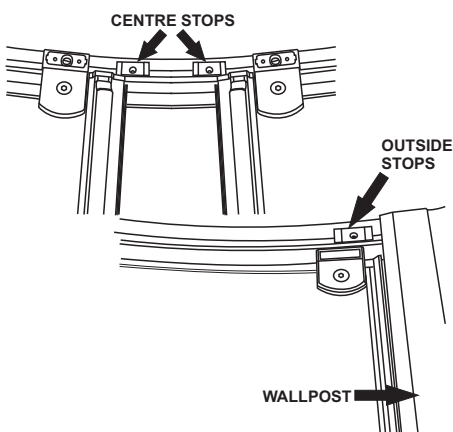
**A** **Roller bearing adjustment-** using screwdriver, loosen screw (do not remove), re-position in slot and re-tighten.

**B** **Patch fitting adjustment-** using allen key, loosen screw (do not remove), lower glass and re-tighten.

**TIP** Release door from rail at bottom and use foot to support door when adjusting.

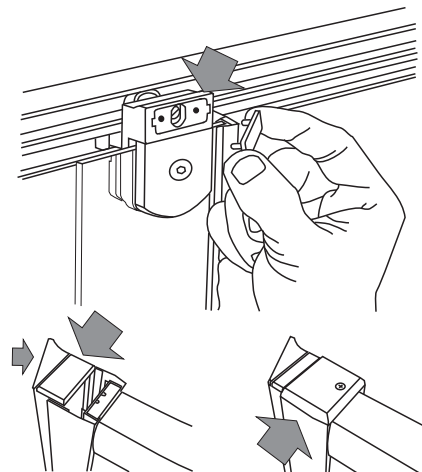
# 21

**SET DOOR STOPS** using 2.5mm allen key supplied. Set centre stop-blocks with the doors in closed position. Then move doors to fully open position, set outer stop-blocks to allow door handles clearance from fixed panel glass.



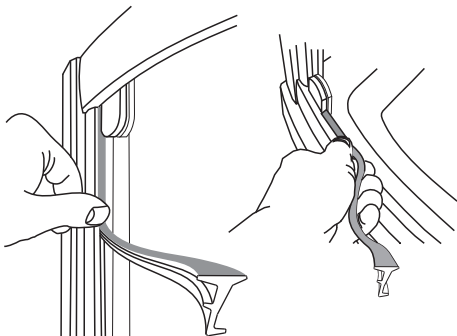
# 22

**FIT COVER CAPS**, to wheel patch fittings and each wall post. Secure wall post cover caps using No.4 x 10mm long screws provided.



# 23

**INSERT WEDGING GASKET** on outside of both fixed panels. Insert long length between clip-in extrusion and glass and short lengths between curved rails and glass at top and bottom, in between patch fittings.

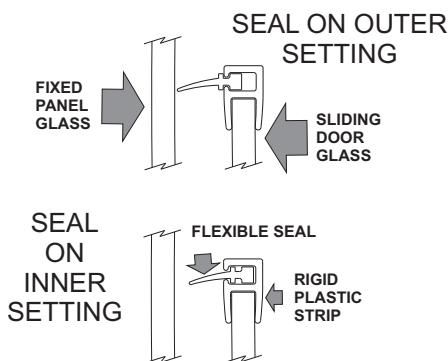


Seal shown shorter for clarity

**TIP** If seals feel tight, then wetting in clean water will help

# 24

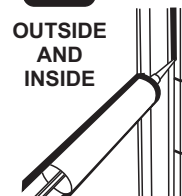
**FIT VERTICAL DOOR** seals which simply clip onto vertical edge of sliding doors to bridge the gap between the two pieces of glass. The flexible seal can be removed from the rigid plastic extrusion and re-set for better clearance if required.



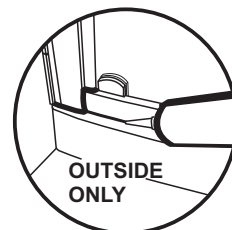
**TIP** To improve door sliding action - cut notch in flexible seal at top and bottom to clear fixed panel patches.

# 25

**SILICONE SEAL UNIT** to walls and tray.



Silicone seal wallposts to wall on inside & outside



Silicone seal frame to tray and joints as shown

## IMPORTANT

**Do not silicone seal on the inside of unit** (except where shown). Sealing the wallposts & rails to the tray on the inside can result in leakage problems - please note that, in use, water can penetrate into the frame extrusions - this has no detrimental effect to the product - however, this water must be allowed to drain out of the extrusions to the inside.

**Allow 24 hours for the silicone to cure before using.**