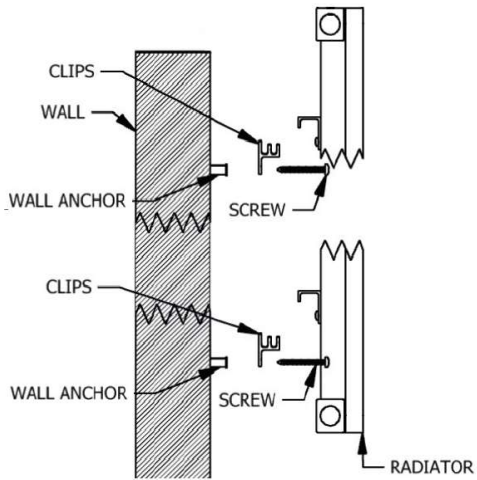


LARGA INSTALLATION GUIDE

This product must be fitted only by a fully qualified installer.



CLIPS X 4 PCS
X 2 PCS (FOR 608 MM WIDTH)



WALL ANCHORS X 8 PCS
X 4 PCS (FOR 608 MM WIDTH)



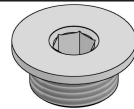
FIXING SCREWS 8 PCS
X 4 PCS (FOR 608 MM WIDTH)



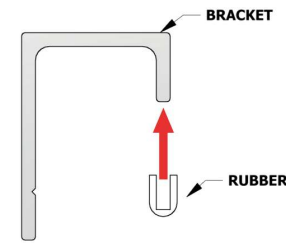
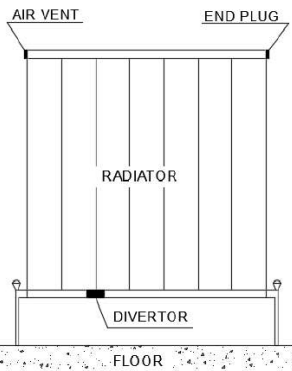
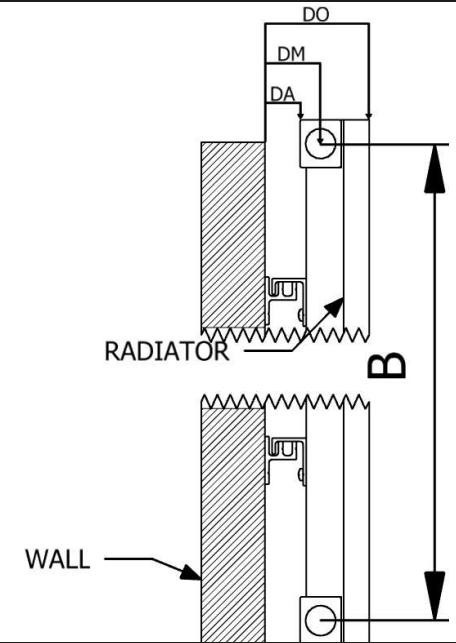
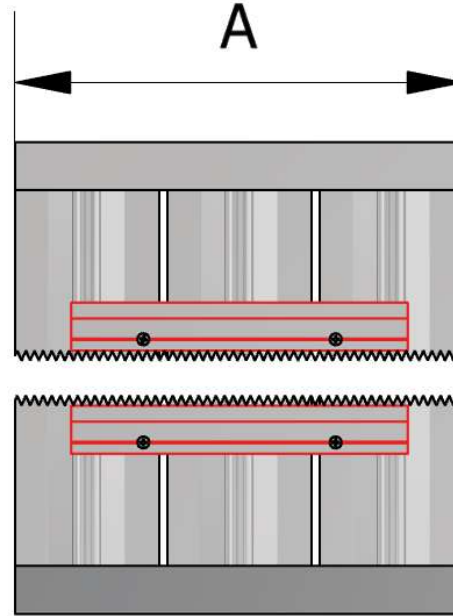
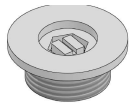
CAP X 2 PCS



END PLUG X 1 PCS

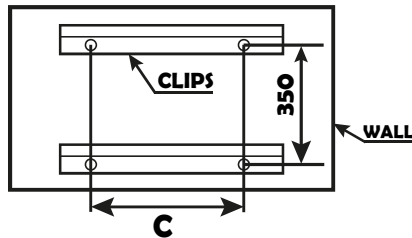


AIR VENT X 1 PCS

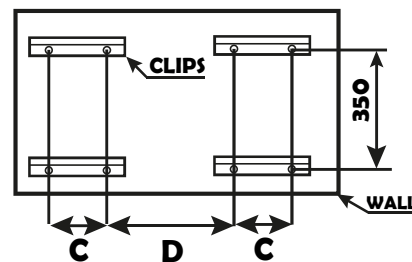


The product was sent you as the rubber was wearred on the product. Make sure and control that the rubber is connected to product after montage process

FOR 608 MM WIDTH PRODUCTS



FOR 812, 1016, 1220 MM WIDTH PRODUCTS



NAMES	HEIGHT	A	B	C	D	DA	DM	DO
LARGA	600	608	545	165		21	36	63
LARGA	600	812	545	165	243	21	36	63
LARGA	600	1016	545	165	447	21	36	63
LARGA	600	1220	545	165	651	21	36	63

GENERAL RECOMMENDATION

- Before fitting the radiator it is necessary to wash out the heating system to remove any existing mud, scale, work residues, traces of flux, oil, etc.
- When the system water pH is outside the 8,5 - 9,5 range and/or when the dissolved is above 0,1mg/liter, it is always needed to protect the heating system components (the radiator is one of these) with a proper chemical treatment compatible with all parts in contact with water (silicon rubber too).
- In order to fit the radiator to the wall, it is necessary to choose the proper fixings for the wall material.
- If the system water exceeds 50°C, please install a warning mark near the radiator to avoid any accidental scalding.
- Clean the radiator surface only with a soft cloth to avoid scratching the finish and do not use chemical agents during cleaning operations. It is prohibited to climb on the radiator.
- Maximum working temperature 95°C, maximum working pressure 4 bar.