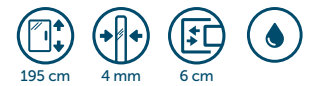


LUNES 2.0 2A DOUBLE SLIDER

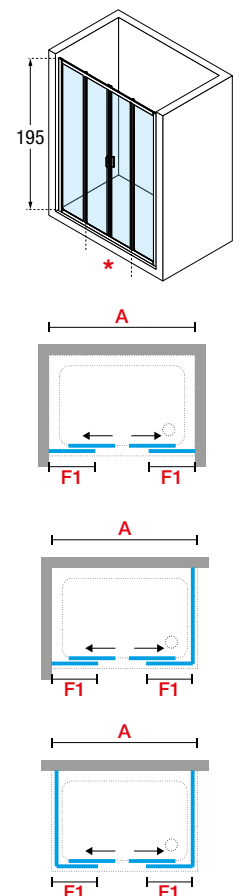


SHOWER DOOR, 2 SLIDING DOORS + 2 FIXED PANELS IN LINE

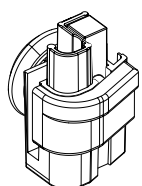
FOR RECESS INSTALLATION OR COMBINED WITH 1 OR 2 OR 2 SIDE PANELS LUNES F OR FZ



Dimensions				Code	Glass				Profile type / Price			
Size	Actual dimensions	Access	Access		1	2	11	78	A	B	K	J
	A	F1	*		Clear	Aqua	Niva	Lunes 2.0 print.	White	Silver	Chrome	Matt Silver
STANDARD												
120	116 ↔ 122	31,5	48	LUN2A116-	●							
130	122 ↔ 128	33	51	LUN2A122-	●							
130	128 ↔ 134	34,5	54	LUN2A128-	●							
140	134 ↔ 140	36	57	LUN2A134-	●							
150	146 ↔ 152	39	63	LUN2A146-	●							
160	158 ↔ 164	42	69	LUN2A158-	●							
170	164 ↔ 170	43,5	72	LUN2A164-	●							
180	176 ↔ 182	46,5	78	LUN2A176-	●							
OTHER SIZES												
◇	140 ↔ 146	37,5	60	LUN2A140-								
◇	152 ↔ 158	40,5	66	LUN2A152-								
◇	170 ↔ 176	45	75	LUN2A170-								



OPTIONAL



K07LUNMO1-A white
K07LUNMO1-G matt silver
 KIT 4 WHEELS FOR RELEASE DOOR
 LUNES 2.0 A-2A

● IN STOCK UK

(Other products) please check availability

Construction of the Code: **Code** + **Glass** + **Profile** = Final product Code

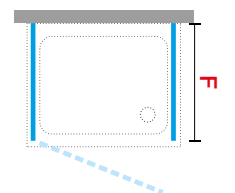
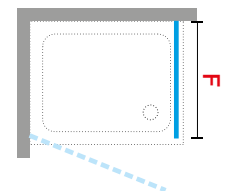
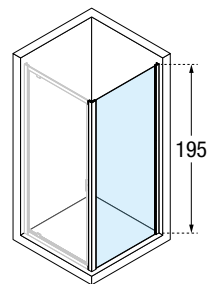
LUNES 2.0 F SIDE PANEL



STANDARD SIDE PANEL



Dimensions		Code	Glass				Profile type / Price			
Size	Actual dimensions		1	2	11	78	A	B	K	J
			Clear	Aqua	Niva	Lunes 2.0 print.	White	Silver	Chrome	Matt Silver
F										
STANDARD										
70	66 ↔ 72	LUNF66-	●							
76	72 ↔ 78	LUNF72-	●							
80	74 ↔ 80	LUNF74-	●							
80	78 ↔ 84	LUNF78-	●							
90	84 ↔ 90	LUNF84-	●							
100	96 ↔ 102	LUNF96-	●							
OTHER SIZES										
◇	90 ↔ 96	LUNF90-	●							



● IN STOCK UK
 (Other products) please check availability

Construction of the Code: Code + Glass + Profile = Final product Code

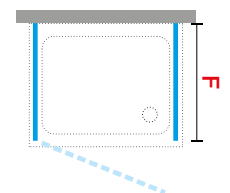
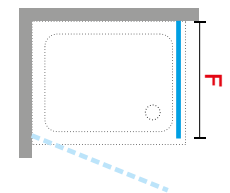
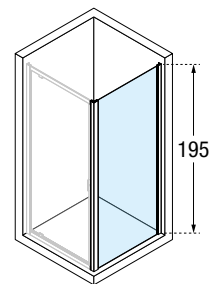
LUNES 2.0 FZ SIDE PANEL



MINIMAL SIDE PANEL



Dimensions		Code	Glass				Profile type / Price			
Size	Actual dimensions		1	2	11	78	A	B	K	J
	F		Clear	Aqua	Niva	Lunes 2.0 print.	White	Silver	Chrome	Matt Silver
STANDARD										
70	68 ↔ 71	LUNFZ68-	●							
76	73 ↔ 76	LUNFZ73-	●							
80	76 ↔ 79	LUNFZ76-	●							
80	78 ↔ 81	LUNFZ78-	●							
90	88 ↔ 91	LUNFZ88-	●							
100	98 ↔ 101	LUNFZ98-	●							
OTHER SIZES										
◇	83 ↔ 86	LUNFZ83-	●							
◇	93 ↔ 96	LUNFZ93-	●							
H 160 ↓ 200	SPECIAL	LUNFZSP				◇				
L 23 ↔ 118										



● IN STOCK UK
 (Other products) please check availability

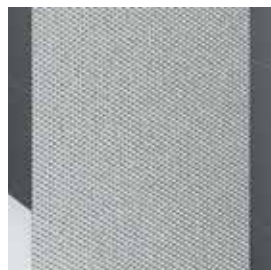
Construction of the Code: Code + Glass + Profile = Final product Code

TECHNICAL DATA

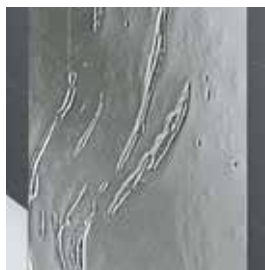
GLASS TYPES (European standards UNI EN 14428)



Clear
COD. 1

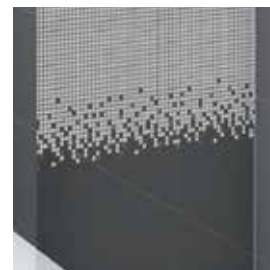


Niva
COD. 11



Aqua
COD. 2

PRINTING



Lunes 2.0
COD. 78

PROFILE COLOURS



White
COD. A



Silver
COD. B



Chrome
COD. K



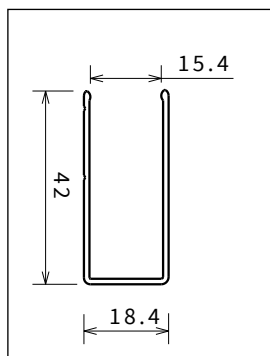
Matt Silver
COD. J

HANDLES



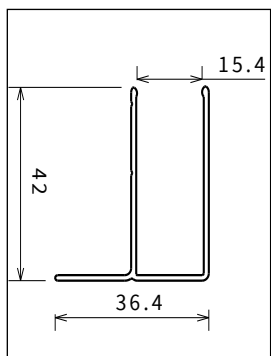
Chrome or white handle

OVERALL DIMENSIONS FIXING PROFILES



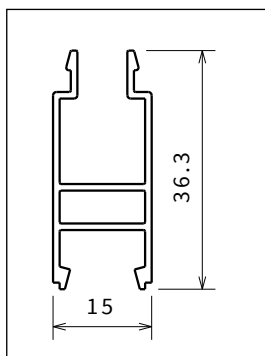
Standard profile
R-2A-2P-2PH-A-AH

Profile type	Code
White	P01BJMOST-A
Silver	P01BJMOST-B
Chrome	P01BJMOST-K
Matt Silver	P01BJMOST-J



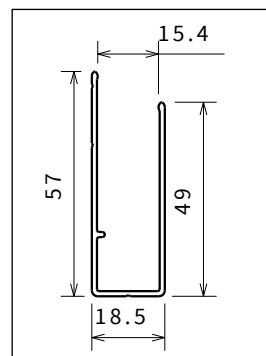
Standard profile
G+FL-3PH-3P-S-B-G

Profile type	Code
White	P0BJGST-A
Silver	P0BJGST-B
Chrome	P0BJGST-K
Matt Silver	P0BJGST-J



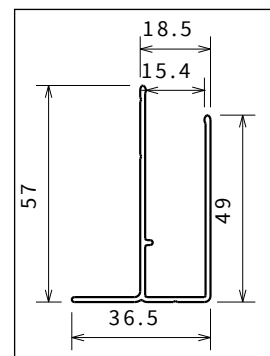
Extension Profile
R-2A-G+FL-3P-3PH-G-B-S-2P-2PH-A-AH

Profile type	Code
White	P05HAAST3-A
Silver	P05HAAST3-B
Chrome	P05HAAST3-K
Matt Silver	P05HAAST3-J



Extension Profile
R-2A-2P-2PH-A-AH

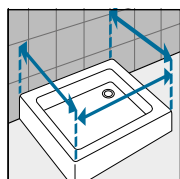
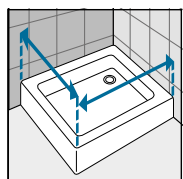
Profile type	Code
White	P05BHST-A
Silver	P05BHST-B
Chrome	P05BHST-K
Matt Silver	P05BHST-J



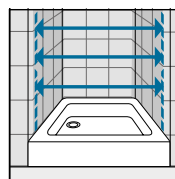
Extension Profile
G+FL-3PH-3P-S-B-G

Profile type	Code
White	P05BHCST-A
Silver	P05BHCST-B
Chrome	P05BHCST-K
Matt Silver	P05BHCST-J

HOW TO TAKE THE MEASUREMENTS



Take the measurements from wall to the external edge of the shower tray. Dimensions must be taken once the walls are finished and tiled, according to the above drawings.



Take the measurements from wall to wall at the bottom, at the top, in the middle and use the smallest. Dimensions must be taken once the walls are finished and tiled, according to the above drawings.

