

BRISTAN

Installation Instructions & User Guide

Please leave these instructions with the end user

Product Code: PMS 54C/DV BUX (D2)

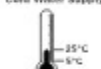
Specifications

Dynamic Water Pressure



Maximum Static Pressure: 10.0 bar

Inlet Water Temperature
Cold Water Supply



Min 5°C Max 25°C

Hot Water Supply



55°C Recommended

The inlet hot water must be at least 10°C above the required blend temperature.

Inlet Dimensions



15mm Compression

Tools You'll Need



Prior to Installation

All products manufactured and supplied by Bristan are safe to use. This document may be reviewed, amended and revised. Log on to www.bristan.co.uk for the latest information.

This product needs to be installed in accordance with, and meet the requirements of the Water Supply (Water Fittings) Regulations 1999 and related by-laws. For full installation requirements & notes, refer to the installation manual.

Installation notes must be fixed to the inlet water supply, to ensure correct future maintenance. Before installing this product, the water supply must be thoroughly flushed in order to remove any scale, sediment etc. Full access must be made available for future maintenance/repairs.

Before drilling into walls, check that there are no hidden electrical wires, cables or water supply pipes. This can be checked with the aid of an electronic detector.

Household tools are used do not forget to:
- Wear eye protection
- Unplug equipment when use

This product must not be modified in any way as this will invalidate the guarantee.

If in doubt, contact a registered plumber, your local water authority or the secretary of the Institute of Plumbing 0800 84 84 84 as follows:

The Institute of Plumbing
64 South Lane
40 Southolt
Middlesex
Tel: 0208 477761

Cavity Dimensions (mm)

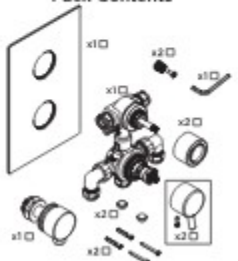
Minimum Fitting Depth: 50mm

Maximum Fitting Depth: 75mm

Concealing Plate Adjustment Range: 25mm



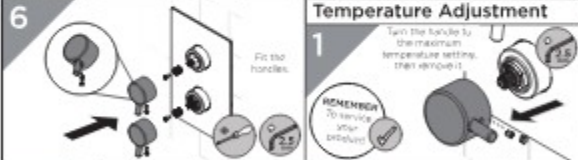
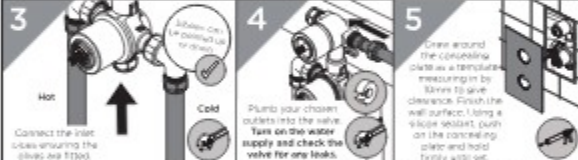
Pack Contents



Valve Configuration



Installation



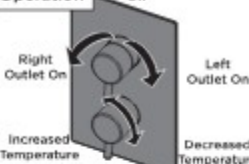
General Cleaning

British products are made from premium materials with hard polished, PVD, EPD or electroplated finishes.

Your shower should be regularly cleaned with warm water, a mild pH-neutral liquid soap, and polished with a soft cloth. Any residues from soap, toothpaste, shampoos and shower gels can cause limescale if not rinsed off straight after use.

Household bleaches and cleaners contain harsh chemicals and may damage the surface finish. Avoid using abrasive cloths, scrubbing pads, scrub sponges, steel wool or anything similar.

Operation



Wall Outlet Installation

With rear access

Choose the location for the wall outlet and create a 75-90mm hole in the wall. Ensure your shower accessible from through reach from that position. Finish the wall surface.

Fit the wall outlet, ensuring the washer is seated either side of the wall.



Go to Step 4 in the Installation Steps.

Without rear access

Follow Step 4 in the Installation Steps, fitting a 1/2" female connection at the hole in the wall (not accessible).

Screw the wall outlet into the 1/2" female connection, using a suitable thread sealant, ensuring the rubber seal is fitted to the top back of the wall outlet.

Servicing intervals

To reduce the build up of limescale and to ensure this shower works to its maximum performance we recommend this shower is serviced every 6-12 months depending on the hardness of your water.

Maintenance - Cartridge Cleaning

- Remove the handles.
- IMPORTANT** Isolate the water supply before starting.

Identify the concealing plate from the wall.
- Undo the brackets. Remove the cartridges and piston.
- Remove any O-rings and seal all components in a bucket and wash off in clean water. Replace all seals and replace if needed. Use VWRG approved silicon based grease on all seals.
- Reverse the installation steps, ensuring the temperature stop is aligned correctly.
- Follow the Temperature Adjustment steps if required.

Increase Temperature

Decrease Temperature

Troubleshooting

Symptom	Cause	Remedy
Intermittent water heater cycles on and off at flow rate or pressure is too low.	Pressure (closed outlet valve)	Open spout on valves
Hot or cold water being taken off ensuring causing pressure changes or intermittent boiler temperature changes.	Hot/Cold water supply has failed.	Increase water flow rate or pressure through system. Refer to the specification for the minimum distance required. If pressure is unbalanced, a pressure reducing valve should be used for optimum performance.
No flow or low flow rate.	Are the water supply valves fully open? Is hot or cold water being taken off ensuring causing pressure changes or intermittent boiler temperature changes. Airlock or partial blockage in the supply supply. Hot/Cold water supply has failed.	Ensure valves are unbalanced, a pressure reducing valve should be used for optimum performance. Flush through pipework and filters to ensure removal of debris and any airlocks. Check the hot and cold feeds. The shower will not work if either fails.
Maximum Water Temperature too Hot/Cold.	Maximum Water Temperature needs adjusting. Filter/pipe blockage. Installation conditions do not comply manufacturer's instructions.	Refer to the Temperature Setting section to set your desired maximum temperature. Flush through pipework and filters to ensure removal of debris and any airlocks. Refer to the specification for the minimum distance required.
Outlet Water Temperature too Hot/Cold.	Hot water temperature is less than 120°C above the required blend temperature. Intermittent water not spraying because the water flow rate is too low. Intermittent water not spraying because the water pressure is too low.	Adjust hot water temperature or wait for water to reheat if a stored water system is used. Increase water flow rate through the system. Refer to the maintenance section to check/replace the cartridge and filters for any damage. Contact your boiler manufacturer. Refer to the specification for system requirements. Increase water pressure through the system. Contact your boiler manufacturer.
Only hot/ cold water from Shower Valve.	Hot water supplies are opened. Filter/pipe blockage.	Check the water inlet connections are the correct way around. Hot on the left, Cold on the right when viewed from the front. Re-work pipework, if necessary. Flush through pipework and filters to ensure removal of debris and any airlocks.
Water dripping from shower.	This is normal for a short time after using the shower. If water continues to drip, possibly due to the cartridge.	This is caused by residual water tension, the build up of water in the shower. Remove cartridge and clean, refer to 'Maintenance' section before starting any maintenance.
Shower does not turn on.	Closed isolation valve. Main water supply turned off.	Open isolation valve. Turn on main water supply.

Our Guarantee

At British, we want to make things as easy as possible for our customers. That's why we offer a 10-year guarantee on all our products, effective from the date of purchase, to give you peace of mind. To start your free guarantee enquiry, scan the QR code and register your product.

For any other queries, please call our Customer Service on 0330 026 6272 where our expert team of advisors will be able to help you any help and advice.

For full guarantee terms and conditions visit www.bristan.co.uk/service-contacts/guarantee.

British Group Ltd.

UK: Bristan Group, 176 G6
 Water Square 2 & 3, 14 Rue Brichet
 6822 Hermonville, Luxembourg.

Customer Service: +44 (0)30 026 6272

Web: www.bristan.com
 Email: enquiry@bristan.com

A Moce Company



BRISTAN

BRISTAN

Installation Instructions & User Guide

Please leave these instructions
with the end user

FHC ABRD01 BLK (D1)

Specifications

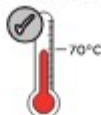
Dynamic Water Pressure

Min: 0.2 bar Max: 5.0 bar



Maximum Static Pressure: 10.0 bar

Inlet Water Temperature



Maximum Hot 70°C

IMPORTANT

The inlet hot water must be at
least 10°C above the require
blend temperature.

Inlet Connections



1/2" BSP (female)

Pack Contents

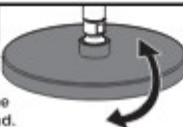
Filter
Washer x1



Fixed Head x1

Operation

Tilt to adjust the
angle of the head.



Installation



Products shown in these instructions are for illustration
purposes only. Your shower can still be installed and operated by
following these instructions.



Ensure the filter washer is correctly
inserted into the
fixed head.



Screw the shower head onto the wall arm by
HAND ONLY. Turn on the water supply and check all
joints and connections for any leaks.

Prior to Installation

All products manufactured and supplied by Bristan are safe to use provided that they are installed,
operated and receive regular maintenance in accordance with these instructions.

This product needs to be installed in accordance with, and meet the requirements of The Water Supply (Water
Fittings) Regulations (Northern Ireland) 2009 and The Water Supply (Water Fittings) (Scotland) Byelaws 2004.
For full Installation Requirements & Notes (PIN) please visit www.wasapprovals.co.uk/approvals-directory

Isolation valves must be fitted to the inlet water supply to ensure ease of future maintenance. Before installing the
product the water supply must be thoroughly flushed in order to remove any silt, solder etc. Full access must be
made available for future maintenance/servicing purposes.

If power tools are used do not forget to: - Wear eye protection - Unplug equipment after use

This product must not be modified in any way as this will invalidate the guarantee.

Spare Parts



To replace any spare
parts for your tap, why
not scan the QR Code or
visit www.bristan.com
and search for
your product.

Cleaning

General Cleaning

Bristan products are made from premium materials, with hand polished, PVD, EPD or electroplated finishes. Your product should be regularly cleaned with warm water, a mild pH-neutral liquid soap, and polished with a soft cloth. Any residues from soap, toothpaste, shampoos and shower gels can cause blemishes if not rinsed off straight after use.

Household bleaches and cleaners contain harsh chemicals and may damage the surface finish. Avoid using abrasive cloths, scouring pads, scrub sponges, steel wool or anything similar.

Cleaning The Shower Head

Your Bristan shower head is equipped with rub-clean nozzles for easy cleaning. Simply rub your fingers across the rubber spray jets regularly and before you turn the shower on to remove and scale or debris.

The hardness of the water in your area will determine how often you should clean your shower head. Build up of scale in particularly hard water areas combined with constant use means you may need to clean your shower head weekly. To ensure continued performance, the shower head needs to be regularly de-scaled.

Contact Us

Bristan Group Ltd.
A Masco Company

BRISTAN

part of **BRISTAN GROUP**

UK: Bristan Group,
Pooley Hall Drive,
Birch Coppice Business Park,
Dordon, Tamworth
B78 1SG.

EU: Masco Europe S.à.r.l.
14 Rue Strachen
6933 Mensdorf
Luxembourg

Email Us: enquire@bristan.com
Website: www.bristan.com
Call Us: +44330 026 6273

Our Guarantee

At Bristan, we want to make things as easy as possible for our customers. That's why we offer solid guarantees on all our products, effective from the date of purchase, to give you peace of mind.

To start your free guarantee simply scan the QR code and register your product. Alternatively visit www.bristan.com/register.

For any other queries, please call our Customer Service on 0330 026 6273 where our expert team of advisers will be able to offer you any help and advice.

For full guarantee terms and conditions visit www.bristan.com/service-centre/guarantees.



BRISTAN

Installation Instructions & User Guide

Please leave these instructions
with the end user

ARM CTRD02 Range (D6)

Specifications

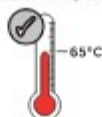
Dynamic Water Pressure

Min: 0.2 bar Max: 5.0 bar



Maximum Static Pressure: 10.0 bar

Inlet Water Temperature



Maximum Hot 65°C

IMPORTANT

The inlet hot water must be at
least 10°C above the require
blend temperature.

Inlet Connections



1/2" BSP

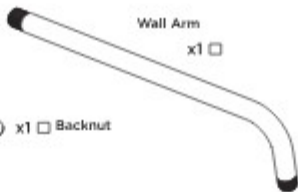
Pack Contents

Shroud x1



Wall Arm

x1



Rubber
Washer

x1



x1 Backnut



Tools Required for Installation



Pipe Cutter



Pencil



Adjustable Spanner



Drill



PTFE Tape



Safety
Goggles



Electronic Detector

Prior to Installation

All products manufactured and supplied by Britan are safe to use provided that they are installed, operated and receive regular maintenance in accordance with these instructions.

This product needs to be installed in accordance with, and meet the requirements of The Water Supply (Water Fittings) Regulations (Northern Ireland) 2009 and The Water Supply (Water Fittings) (Scotland) Byelaws 2004. For full installation Requirements & Notes (PIN) please visit www.wasapprovals.co.uk/approvals-directory

Isolation valves must be fitted to the inlet water supply to ensure ease of future maintenance. Before installing the product the water supply must be thoroughly flushed in order to remove any silt, solder etc. Full access must be made available for future maintenance/servicing purposes.

If power tools are used do not forget to: - Wear eye protection - Unplug equipment after use

This product must not be modified in any way as this will invalidate the guarantee.

Spare Parts



To replace any spare
parts for your tap, why
not scan the QR Code or
visit: www.bristan.com
and search for
your product.

Installation



PLEASE NOTE - Products shown in these instructions are for illustration purposes only. Your product can still be installed by following these instructions.

1

Thread the arm through the wall.

Slide the shroud into place, ensuring the fitted rubber seal is tightly secured to the inside.

2

Place the rubber washer followed by the backnut onto the threaded connection.



Slide the washer towards the wall and tighten the backnut.

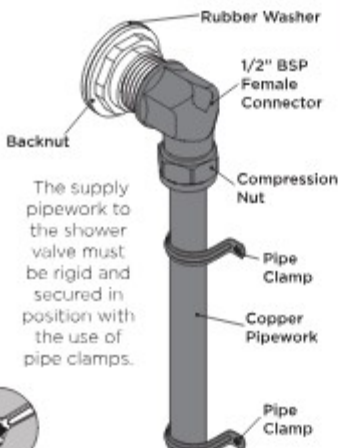


Ensure the arm is stable and secured in place.



3

Connect the outlet pipework to the shower arm using a suitable connector (not supplied).



4

Screw the shower head onto the wall arm by **HAND ONLY**.



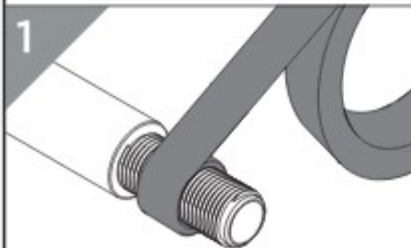
Turn on the water supply and check all joints and connections for any leaks.

Alternative Installation



PLEASE NOTE - Products shown in these instructions are for illustration purposes only. Your riser outlet can still be installed by following these instructions.

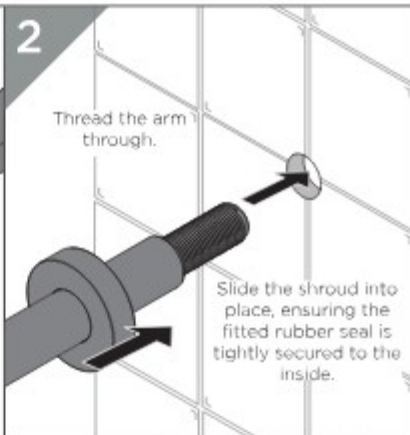
1



Use a suitable sealant that is compliant with UK Water Regulations around the thread.



2

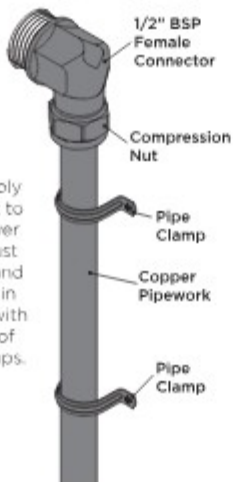


Thread the arm through.

Slide the shroud into place, ensuring the fitted rubber seal is tightly secured to the inside.

3

Connect the outlet pipework to the shower arm using a suitable connector (not supplied).



The supply pipework to the shower valve must be rigid and secured in position with the use of pipe clamps.



4

Screw the shower head onto the wall arm by **HAND ONLY**.



Turn on the water supply and check all joints and connections for any leaks.

Cleaning

General Cleaning

Bristan products are made from premium materials, with hand polished, PVD, EPD or electroplated finishes. Your product should be regularly cleaned with warm water, a mild pH-neutral liquid soap, and polished with a soft cloth. Any residues from soap, toothpaste, shampoos and shower gels can cause blemishes if not rinsed off straight after use.

Household bleaches and cleaners contain harsh chemicals and may damage the surface finish. Avoid using abrasive cloths, scouring pads, scrub sponges, steel wool or anything similar.

Cleaning The Shower Head

The hardness of the water in your area will determine how often you should clean your shower head. Build up of scale in particularly hard water areas combined with constant use means you may need to clean your shower head weekly. To ensure continued performance, the shower head needs to be regularly de-scaled.

Contact Us

Bristan Group Ltd.
A Masco Company

BRISTAN

part of **BRISTAN GROUP**

UK: Bristan Group,
Pooley Hall Drive,
Birch Coppice Business Park,
Dordon, Tamworth
B78 1SG.

EU: Masco Europe S.à.r.l.
14 Rue Strachen
6933 Mendsdorf
Luxembourg

Email Us: enquire@bristan.com
Website: www.bristan.com
Call Us: +44330 026 6273

Our Guarantee

At Bristan, we want to make things as easy as possible for our customers. That's why we offer solid guarantee on all our products, effective from the date of purchase, to give you peace of mind.

To start your free guarantee simply scan the QR code and register your product.
Alternatively visit www.bristan.com/register.



For any other queries, please call our Customer Service on 0330 026 6273 where our expert team of advisers will be able to offer you any help and advice.

For full guarantee terms and conditions visit www.bristan.com/service-centre/guarantees.

BRISTAN

Installation Instructions & User Guide

Please leave these instructions
with the end user

Product Code: C WORD02 Range (D2)

Specifications

Working Pressure



Maximum Static Pressure: 10.0 bar

Tools You'll Need



Inlet Connections



15mm Compression via
Wall Mount

Prior to Installation

All products manufactured and supplied by Britsan are made in the UK. They are installed under warranty and are covered by a 5-year manufacturer's warranty.

Installation must be done by a qualified plumber to ensure safe and reliable operation.

This product must not be modified in any way as this will void the guarantee.

Full access must be made available for future maintenance / servicing purposes. This product needs to be installed in accordance with and meet the requirements of the Water Supply (Water Fittings) Regulations 1999 and Scottish Bylaws 2004.

Before using any installation please consider the following: install in a dry, well-ventilated area; do not install in a room with a boiler, water heater, or water supply pipe. This can be checked with the aid of an electronic detector.

If power tools are used do not forget to:
- wear eye protection
- always disconnect power

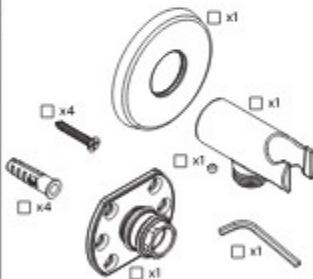
Warning! It is essential that you thoroughly flush through the pressure in the boiler before any work is carried out. Failure to do so could cause personal injury or damage.

If in doubt, contact a registered plumber or your Local Water Authority at the territory of the location of plumbing intended to be done.

The liability of Bristan is limited to:
- replacement and
- repair work.

BRISAN 0962, Tel: 01708 412709

Pack Contents



Spare Parts

To replace any spare parts for your product why not scan the QR Code or visit www.bristan.com and search for your product.



Installation

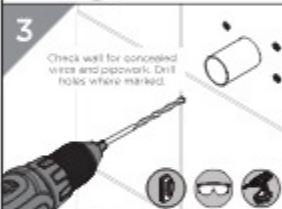
1



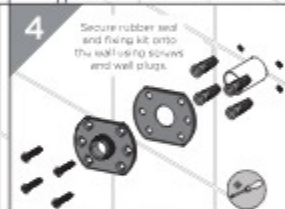
2



3



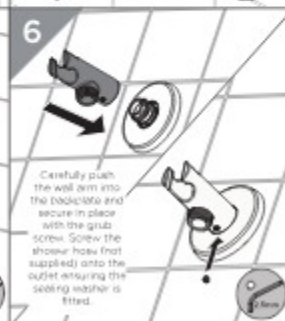
4



5



6



Notes

Please use this space for any notes you or your installer may have regarding the installation/plumbing of this product.

General Cleaning

Bristan products are made from premium materials, with hand polishing and electroplated, PVD or EPD finishes.

Your taps, shower and accessories should be regularly cleaned with warm water, a mild pH-neutral liquid soap, and polished with a soft cloth. Any residues from soap, toothpaste, shampoos and shower gels can cause blemishes if not rinsed off straight after use.

Household bleaches and cleaners contain harsh chemicals and may damage the surface finish.

Avoid using abrasive cloths, scouring pads, scrub sponges, steel wool or anything similar.

Contact Us

BRISTANby MASCO GROUP

Bristan Group Ltd.
A Masco Company

UK: Bristan Group,
Pooley Hall Drive,
Birch Coppice Business Park,
Dorcan, Tainworth
B78 15G

EU: Masco Europe S.à.r.l.
14 Rue Strehen
6933 Mersdorf
Luxembourg

Email Us: enquire@bristan.com
Website: www.bristan.com
Call Us: +44330 026 6275

Our Guarantee

At Bristan, we want to make things as easy as possible for our customers. That's why we offer solid guarantees on all our products, effective from the date of purchase, to give you peace of mind.

To start your free guarantee simply scan the QR code and register your product. Alternatively visit

www.bristan.com/register.

For any other queries, please call our Customer Service on 0330 026 6275 where our expert team of advisors will be able to offer you any help and advice.

For full guarantee terms and conditions visit www.bristan.com/service-centre/guarantees



BRISTAN

Installation Instructions & User Guide

Please leave these instructions
with the end user

Product Code: NTE-F (24)

Specifications

Working Pressure



Tools You'll Need



Inlet Connections



Maximum Static Pressure: 10.0 bar

Prior to Installation

All products installed and used in compliance with the manufacturer's instructions. The manufacturer is not responsible for any damage caused by incorrect installation or use. The manufacturer is not responsible for any damage caused by incorrect installation or use.

This product must not be installed in any way that will cause it to be damaged.

All products must be installed in compliance with the manufacturer's instructions. The manufacturer is not responsible for any damage caused by incorrect installation or use. The manufacturer is not responsible for any damage caused by incorrect installation or use.

Before starting any installation, please check the following: Verify that the product is suitable for the intended use. The manufacturer is not responsible for any damage caused by incorrect installation or use.

Please do not use any tools that are not recommended by the manufacturer.

Working in a confined space, such as a bathroom, can be dangerous. Please ensure that you have adequate ventilation and that you are not using any flammable materials.

If you are a professional installer, please ensure that you are qualified to install this product. The manufacturer is not responsible for any damage caused by incorrect installation or use.

The manufacturer is not responsible for any damage caused by incorrect installation or use. The manufacturer is not responsible for any damage caused by incorrect installation or use.

Pack Contents



Spare Parts

To order any spare parts for your product, please scan the QR Code or visit www.bristan.com and search for your product.



Installation

1

Choose the location for the wall outlet and create a 25-30mm hole in the wall.

Ensure your hole can cover the distance needed from the wall outlet to your shower kit. Allow for the adjustability of your shower kit to cover all user heights.

Check wall for reinforcement wires and rebarwork before any drilling operations. Place the tool into the rear of the product, prior to fitting to the wall.

2a With Rear Access

Fit the wall outlet, ensuring the washers are fitted either side of the wall. Screw on the backnut. **DO NOT OVERTIGHTEN**. Connect the water supply pipework to the outlet.

2b Without Rear Access

Backnut and washer not required for this method. Plumb the copper pipework to the desired location. Screw the wall outlet into the 1/2" female connector, using a suitable thread sealant. Ensure the rubber seal is fitted to the back of the wall outlet.

3

Screw the shower hose (not supplied) onto your wall outlet. Turn on water supply and check all joints and connections for any leaks.

Notes

Please use this space for any notes you or your installer may have regarding the installation/plumbing of this product.

General Cleaning

Bristan products are made from premium materials, with hand polishing and electroplated, PVD or EPD finishes.

Your taps, shower and accessories should be regularly cleaned with warm water, a mild pH-neutral liquid soap, and polished with a soft cloth. Any residues from soap, toothpaste, shampoos and shower gels can cause blemishes if not rinsed off straight after use.

Household bleaches and cleaners contain harsh chemicals and may damage the surface finish.

Avoid using abrasive cloths, scouring pads, scrub sponges, steel wool or anything similar.

Contact Us

BRISTANTHE BRISTAN GROUP

Bristan Group Ltd.
A Masco Company

UK: Bristan Group
Pineley Hall Drive
Birch Coppice Business Park
Dordon, Tamworth
B78 1SQ

EU: Masco Europa S.à.r.l.
14 Rue Strachen
6933 Mersdorf
Luxembourg

Email Us: enquire@bristan.com
Website: www.bristan.com
Call Us: +44330 026 6273

Our Guarantee

At Bristan, we want to make things as easy as possible for our customers. That's why we offer solid guarantees on all our products, effective from the date of purchase, to give you peace of mind.

To start your free guarantee simply scan the QR code and register your product. Alternatively visit

www.bristan.com/register.

For any other queries, please call our Customer Service on 0330 026 6273, where our expert team of advisors will be able to offer you any help and advice.

For full guarantee terms and conditions visit www.bristan.com/service-centre/guarantees.

