

BRISTAN

Installation Instructions & User Guide

Please leave these instructions with the end user

Product Code: BAF 18035V C (EU)

Specifications

Dynamic Water Pressure



Maximum Static Pressure: 10.0 bar

Inlet Water Temperature

Cold Water Supply



Min: 5°C Max: 23°C

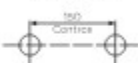
Hot Water Supply



85°C Recommended

The inlet hot water must be at least 10°C above the required blend temperature.

Inlet Dimensions



Prior to Installation

All products manufactured and supplied by us are safe to use. This document may be available without an active digital registration in accordance with British Standards.

This product needs to be installed in accordance with, and meet the requirements of the Water Supply (Water Fittings) Regulations 1999 and current by-laws. For full installation requirements & notes, please contact www.bristan.co.uk or 01753 816161.

Installation before must be fitted to the inlet water supply. In case of any of future maintenance, before in adding this product, the water supply must be thoroughly flushed in order to remove any scale, sediment and full access must be made available for future maintenance services to be used.

Before drilling into walls, check that there are no hidden electrical wires, cables or water supply pipes. This can be checked with the aid of an electronic detector.

Power tools are used to not forget to:
- Wear eye protection
- Use equipment when use

This product must not be modified in any way as this will void the guarantee.

If in doubt, contact a registered plumber, your local water authority or the secretary of the Institute of Plumbing 0800 345 410.

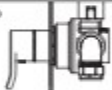
The Institute of Plumbing
64 South Lane,
100 South,
London,
W8 7LH UK Tel: 0204 477761

Cavity Dimensions (mm)

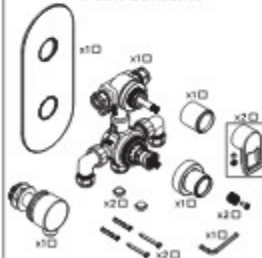
Minimum Fitting Depth: 60mm

Maximum Fitting Depth: 75mm

Covering Plate Adjustment Range: 5mm



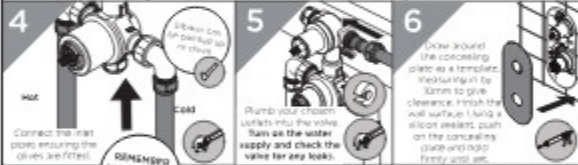
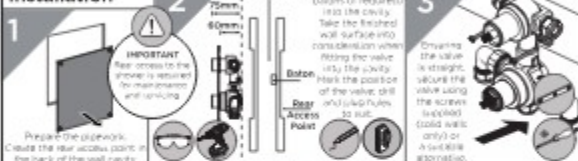
Pack Contents



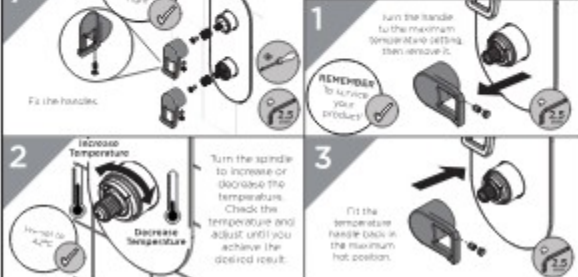
Valve Configuration



Installation



Temperature Adjustment



General Cleaning

Bristan products are made from premium materials, with hand polished, PVD, EPD or electroplated finishes.

Your shower should be regularly cleaned with warm water, a mild pH-neutral liquid soap, and polished with a soft cloth. Any residues from soap, toothpaste, shampoo and shower gels can cause blanches if not rinsed off straight after use.

Household bleaches and cleansers contain harsh chemicals and may damage the surface finish, avoid using abrasive cloths, scouring pads, scrub sponges, steel wool or anything similar.

Operation

Left Outlet On
Increased Temperature

Right Outlet On
Decreased Temperature

Wall Outlet Installation

With rear access

Choose the location for the wall outlet and create a 23-50mm hole in the wall. Ensure your Shower Accessories have enough reach from that position. Finish the wall surface.

Fit the wall outlet ensuring the wires are fitted either side of the wall.

Without rear access

Follow Step 5 in the Installation Steps. Fit a 1/2" female connector at the hole in the wall (not supplied). Screw the wall outlet into the 1/2" female connector, using a suitable thread sealant ensuring the rubber seal is fixed to the back of the wall outlet.

Servicing Intervals

To reduce the build up of lime scale and to ensure this shower works to its maximum performance we recommend this shower is serviced every 6-12 months depending on the hardness of your water.

Maintenance - Cartridge Cleaning

- Remove the handles.
- Gently remove the concealing plate from the wall.
- Unscrew the screws. Remove the cartridges and piston.
- Remove any O-rings and soak all components in descaler and wash off in clean water. Examine all seals and replace if needed. Use WLGSS approved clean based grease on all seals.
- Reverse the installation steps, ensuring the temperature stop is aligned correctly.
- Follow the Temperature Adjustment Steps if required.

INCREASE Temperature

DECREASE Temperature

Troubleshooting

Symptom	Cause	Remedy
Intermittent water heater cycles on and off at flow rate or pressure is too low.	Pressure (closed outlet valve)	Open spout on valves
Hot or cold water being taken off ensuring causing pressure changes or intermittent boiler temperature changes.	Hot/Cold water supply has failed	Increase water flow rate or pressure through system
No flow or low flow rate	Are the water supply valves fully open? Is hot or cold water being taken off ensuring causing pressure changes or intermittent boiler temperature changes.	Refer to the specification for the minimum distance required If pressures are unbalanced, a pressure reducing valve should be used for optimum performance
	Airlock or partial blockage in the supply system	Do not use other water outlets when using the shower
	Hot/Cold water supply has failed	Flush through pipework and filters to ensure removal of debris and any airlocks Check the hot and cold feeds. The shower will not work if either fails.
Maximum Water Temperature too Hot/Cold	Maximum Water Temperature needs adjusting	Refer to the Temperature Setting section to set your desired maximum temperature
	Filter/blockage	Flush through pipework and filters to ensure removal of debris and any airlocks
	Installation conditions provide opposing pressures	Refer to the specification for the minimum distance required
Outlet Water Temperature too Hot/Cold	Hot water temperature is less than 10°C above the required blend temperature	Adjust hot water temperature or wait for water to reheat if a stored water system is used
	Intermittent water not running because the water flow valve is too low	Increase water flow rate through the system. Refer to the maintenance section to check/replace the cartridge and filters for any damage. Contact your boiler manufacturer.
	Intermittent water not running because the water pressure is too low	Refer to the specification for system requirements. Increase water pressure through the system. Contact your boiler manufacturer.
Only hot/ cold water from Shower Valve	Hot water supplies are opened	Check the water inlet connections are the correct way around. Hot on the left, Cold on the right unless viewed from the front. Re-work pipework if necessary.
Water dripping from shower	Filter/blockage If water continues to drip, possibly due to the cartridge	Flush through pipework and filters to ensure removal of debris and any airlocks This is caused by residual water tension, the build up of water in the shower.
Shower does not turn as	Closed isolation valve Main water supply turned off	Open isolation valve Turn on main water supply

Our Guarantee

At Bristan, we want to make things as easy as possible for our customers. That's why we offer 100% guarantees on all our products, effective from the date of purchase, to give you peace of mind.

To start your free guarantee process, scan the QR code and register your product.

Alternatively visit www.bristan.com/register

For any other queries, please call our Customer Service on 0330 026 6272 where our expert team of advisors will be able to help you any help and advice.

Our full guarantee terms and conditions visit www.bristan.com/service-contacts/guarantee

Bristan Group Ltd.
 UK: Bristan Group, R76 600
 Metro Centre 2 & 3, 14 Blue Street
 8522 Mermaid, Luton, Bedfordshire.

Customer Service: +44-0330 026 6272
 Web: www.bristan.com
 Email: enquiry@bristan.com

BRISTAN
A Moce Company

BRISTAN

Installation Instructions & User Guide

Please leave these instructions
with the end user

ARM CTRD02 Range (D6)

Specifications

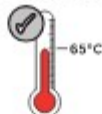
Dynamic Water Pressure

Min: 0.2 bar Max: 5.0 bar



Maximum Static Pressure: 10.0 bar

Inlet Water Temperature



Maximum Hot 65°C

IMPORTANT

The inlet hot water must be at
least 10°C above the require
blend temperature.

Inlet Connections



1/2" BSP

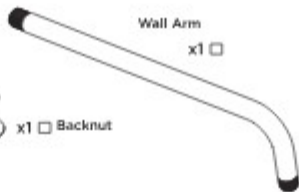
Pack Contents

Shroud x1



Wall Arm

x1



Rubber
Washer

x1



x1 Backnut



Tools Required for Installation



Pipe Cutter



Pencil



Adjustable Spanner



Drill



PTFE Tape



Safety
Goggles



Electronic Detector

Prior to Installation

All products manufactured and supplied by Bristan are safe to use provided that they are installed, operated and receive regular maintenance in accordance with these instructions.

This product needs to be installed in accordance with, and meet the requirements of The Water Supply (Water Fittings) Regulations (Northern Ireland) 2009 and The Water Supply (Water Fittings) (Scotland) Byelaws 2004. For full installation Requirements & Notes (PIN) please visit www.wasapprovals.co.uk/approvals-directory

Isolation valves must be fitted to the inlet water supply to ensure ease of future maintenance. Before installing the product the water supply must be thoroughly flushed in order to remove any silt, solder etc. Full access must be made available for future maintenance/servicing purposes.

If power tools are used do not forget to: - Wear eye protection - Unplug equipment after use

This product must not be modified in any way as this will invalidate the guarantee.

Spare Parts



To replace any spare
parts for your tap, why
not scan the QR Code or
visit: www.bristan.com
and search for
your product.

Installation



PLEASE NOTE - Products shown in these instructions are for illustration purposes only. Your product can still be installed by following these instructions.

1

Thread the arm through the wall.

Slide the shroud into place, ensuring the fitted rubber seal is tightly secured to the inside.

2

Place the rubber washer followed by the backnut onto the threaded connection.



Slide the washer towards the wall and tighten the backnut.

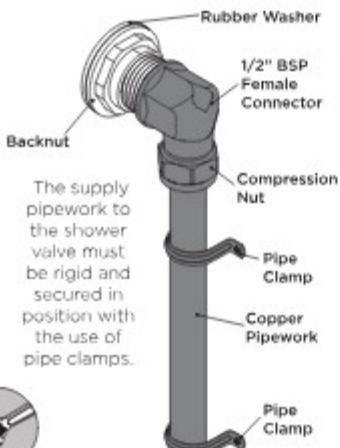


Ensure the arm is stable and secured in place.



3

Connect the outlet pipework to the shower arm using a suitable connector (not supplied).



4

Screw the shower head onto the wall arm by **HAND ONLY**.



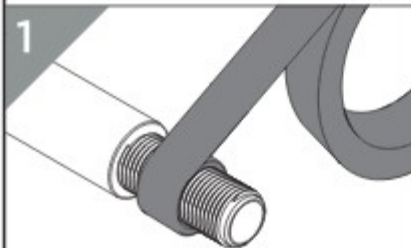
Turn on the water supply and check all joints and connections for any leaks.

Alternative Installation



PLEASE NOTE - Products shown in these instructions are for illustration purposes only. Your riser outlet can still be installed by following these instructions.

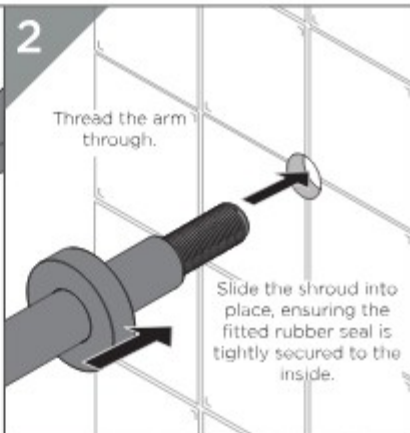
1



Use a suitable sealant that is compliant with UK Water Regulations around the thread.



2

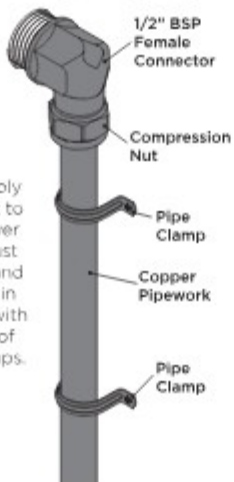


Thread the arm through.

Slide the shroud into place, ensuring the fitted rubber seal is tightly secured to the inside.

3

Connect the outlet pipework to the shower arm using a suitable connector (not supplied).



The supply pipework to the shower valve must be rigid and secured in position with the use of pipe clamps.



4

Screw the shower head onto the wall arm by **HAND ONLY**.



Turn on the water supply and check all joints and connections for any leaks.

Cleaning

General Cleaning

Bristan products are made from premium materials, with hand polished, PVD, EPD or electroplated finishes. Your product should be regularly cleaned with warm water, a mild pH-neutral liquid soap, and polished with a soft cloth. Any residues from soap, toothpaste, shampoos and shower gels can cause blemishes if not rinsed off straight after use.

Household bleaches and cleaners contain harsh chemicals and may damage the surface finish. Avoid using abrasive cloths, scouring pads, scrub sponges, steel wool or anything similar.

Cleaning The Shower Head

The hardness of the water in your area will determine how often you should clean your shower head. Build up of scale in particularly hard water areas combined with constant use means you may need to clean your shower head weekly. To ensure continued performance, the shower head needs to be regularly de-scaled.

Contact Us

Bristan Group Ltd.
A Masco Company

BRISTAN

part of **BRISTAN GROUP**

UK: Bristan Group,
Pooley Hall Drive,
Birch Coppice Business Park,
Dordon, Tamworth
B78 1SG.

EU: Masco Europe S.à.r.l.
14 Rue Strachen
6933 Mendsdorf
Luxembourg

Email Us: enquire@bristan.com
Website: www.bristan.com
Call Us: +44330 026 6273

Our Guarantee

At Bristan, we want to make things as easy as possible for our customers. That's why we offer solid guarantee on all our products, effective from the date of purchase, to give you peace of mind.

To start your free guarantee simply scan the QR code and register your product.
Alternatively visit www.bristan.com/register.



For any other queries, please call our Customer Service on 0330 026 6273 where our expert team of advisers will be able to offer you any help and advice.

For full guarantee terms and conditions visit www.bristan.com/service-centre/guarantees.

BRISTAN

Installation Instructions & User Guide

Please leave these instructions
with the end user

FH SLRD01 Range (D5)

Specifications

Dynamic Water Pressure

Min: 0.2 bar Max: 5.0 bar



Maximum Static Pressure: 10.0 bar

Inlet Water Temperature



Maximum Hot 85°C

IMPORTANT

The inlet hot water must be at
least 10°C above the require
blend temperature.



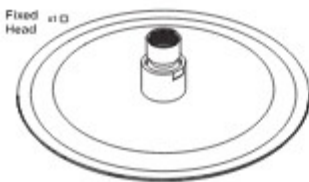
Inlet Connections



1/2" BSP (female)

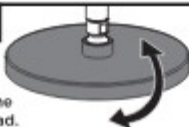
Pack Contents

Filter
Washer 



Operation

Tilt to adjust
the angle of the head.



Installation



Products shown in these instructions are for illustration
purposes only. Your shower can still be installed and operated by
following these instructions.



Ensure the filter
washer is correctly
inserted into the
fixed head.



Screw the shower head onto the wall arm by
HAND ONLY. Turn on the water supply and check all
joints and connections for any leaks.

Prior to Installation

All products manufactured and supplied by Bristan are safe to use provided that they are installed,
operated and receive regular maintenance in accordance with these instructions.

This product needs to be installed in accordance with, and meet the requirements of The Water Supply (Water
Fittings) Regulations (Northern Ireland) 2009 and The Water Supply (Water Fittings) (Scotland) Byelaws 2004.
For full Installation Requirements & Notes (PIN) please visit www.wasapprovals.co.uk/approvals-directory

Isolation valves must be fitted to the inlet water supply to ensure ease of future maintenance. Before installing the
product the water supply must be thoroughly flushed in order to remove any silt, solder etc. Full access must be
made available for future maintenance/servicing purposes.

If power tools are used do not forget to: - Wear eye protection - Unplug equipment after use

This product must not be modified in any way as this will invalidate the guarantee.

Spare Parts



To replace any spare
parts for your tap, why
not scan the QR Code or
visit www.bristan.com
and search for
your product.

Cleaning

General Cleaning

Bristan products are made from premium materials, with hand polished, PVD, EPD or electroplated finishes. Your product should be regularly cleaned with warm water, a mild pH-neutral liquid soap, and polished with a soft cloth. Any residues from soap, toothpaste, shampoos and shower gels can cause blemishes if not rinsed off straight after use.

Household bleaches and cleaners contain harsh chemicals and may damage the surface finish. Avoid using abrasive cloths, scouring pads, scrub sponges, steel wool or anything similar.

Cleaning The Shower Head

Your Bristan shower head is equipped with rub-clean nozzles for easy cleaning. Simply rub your fingers across the rubber spray jets regularly and before you turn the shower on to remove and scale or debris.

The hardness of the water in your area will determine how often you should clean your shower head. Build up of scale in particularly hard water areas combined with constant use means you may need to clean your shower head weekly. To ensure continued performance, the shower head needs to be regularly de-scaled.

Contact Us

Bristan Group Ltd.
A Masco Company

BRISTAN

part of **BRISTAN GROUP**

UK: Bristan Group,
Pooley Hall Drive,
Birch Coppice Business Park,
Dordon, Tamworth
B78 1SG.

EU: Masco Europe S.à.r.l.
14 Rue Strachen
6933 Mensdorf
Luxembourg

Email Us: enquire@bristan.com
Website: www.bristan.com
Call Us: +44330 026 6273

Our Guarantee

At Bristan, we want to make things as easy as possible for our customers. That's why we offer solid guarantees on all our products, effective from the date of purchase, to give you peace of mind.

To start your free guarantee simply scan the QR code and register your product. Alternatively visit www.bristan.com/register.

For any other queries, please call our Customer Service on 0330 026 6273 where our expert team of advisers will be able to offer you any help and advice.

For full guarantee terms and conditions visit www.bristan.com/service-centre/guarantees.



BRISTAN

Installation Instructions & User Guide

Please leave these instructions
with the end user

Product Code: C W5002 C (02)

Specifications

Working Pressure



Min: 0.2 bar Max: 10 bar

Tools You'll Need



Adjustable spanner

Inlet Connections



15mm Compression Nut
via Wall Mount

Maximum Static Pressure: 10.0 bar

Prior to Installation

All products manufactured and supplied by Britsan are made in the UK. They are installed under warranty and are covered by a 5-year manufacturer's warranty.

Installation must be done by a qualified plumber or electrician to ensure safe and reliable operation.

This product must not be modified in any way as this will void the guarantee.

Full access must be made available for future maintenance / servicing purposes. This product needs to be installed in accordance with and meet the requirements of the Water Supply (Water Fittings) Regulations 1999 and Scottish Bylaws 2004.

Before using any installation please consider the following: install in a dry, well-ventilated area; do not install in a room with a bath, shower or water supply pipe. This can be checked with the aid of an electronic detector.

If power tools are used do not forget to:
- wear eye protection
- always disconnect power

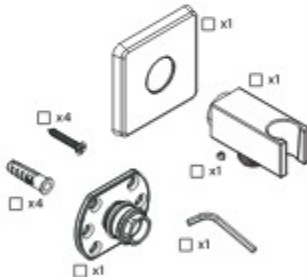
Warning! It is essential that you thoroughly flush through the shower before use. This is to ensure any manufacturing debris is removed. Failure to carry out this procedure could cause problems or damage.

If in doubt, contact a registered plumber or your Local Water Authority at the locality of the install or Plumbing Services at Britsan.

The liability of Britsan is limited to:
- Replacement and
- Refunds only.

Phone: 01753 6923, Tel: 01709 412709

Pack Contents



Spare Parts

To replace any spare parts for your product why not scan the QR Code or visit www.britsan.com and search for your product.



Installation

1



Uncrew the nut from the front of the metal backplate then remove the olive. Ensure the rubber backplate starts with the metal backplate for fitting.

2



Fit plumbing to location and cut pipework to length. The distance of the pipe protruding from the wall must be 23-30mm. Place wall plate over the pipe against the (left) surface. Mark the screw holes.

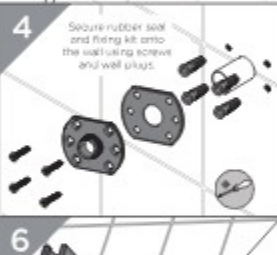
Max. 30mm

3



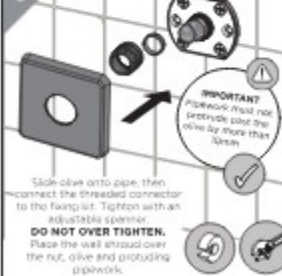
Check wall for concealed wires and pipework. Drill holes where marked.

4



Secure rubber seal and fitting kit onto the wall using screws and wall plugs.

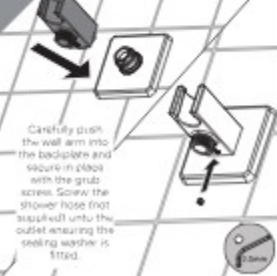
5



IMPORTANT
Hardware must not protrude past the olive by more than 1mm.

Push olive onto pipe, then connect the threaded connector to the fitting kit. Tighten with an adjustable spanner. **DO NOT OVER TIGHTEN.** Place the wall shield over the nut, olive and protruding pipework.

6



Carefully push the wall arm into the backplate and secure in place with the grub screw. Screw the shower hose (not supplied) onto the outlet ensuring the sealing washer is fitted.

Notes

Please use this space for any notes you or your installer may have regarding the installation/plumbing of this product.

General Cleaning

Bristan products are made from premium materials, with hand polishing and electroplated, PVD or EPD finishes.

Your taps, shower and accessories should be regularly cleaned with warm water, a mild pH-neutral liquid soap, and polished with a soft cloth. Any residues from soap, toothpaste, shampoos and shower gels can cause blemishes if not rinsed off straight after use.

Household bleaches and cleaners contain harsh chemicals and may damage the surface finish.

Avoid using abrasive cloths, scouring pads, scrub sponges, steel wool or anything similar.

Contact Us

BRISTANby MASCO GROUP

Bristan Group Ltd.
A Masco Company

UK: Bristan Group,
Pooley Hall Drive,
Birch Coppice Business Park,
Dorcan, Tainworth
B78 15G

EU: Masco Europe S.à.r.l.
14 Rue Strehen
6933 Mersdorf
Luxembourg

Email Us: enquire@bristan.com
Website: www.bristan.com
Call Us: +44330 026 6275

Our Guarantee

At Bristan, we want to make things as easy as possible for our customers. That's why we offer solid guarantees on all our products, effective from the date of purchase, to give you peace of mind.

To start your free guarantee simply scan the QR code and register your product. Alternatively visit

www.bristan.com/register.

For any other queries, please call our Customer Service on 0330 026 6275 where our expert team of advisors will be able to offer you any help and advice.

For full guarantee terms and conditions visit www.bristan.com/service-centre/guarantees

