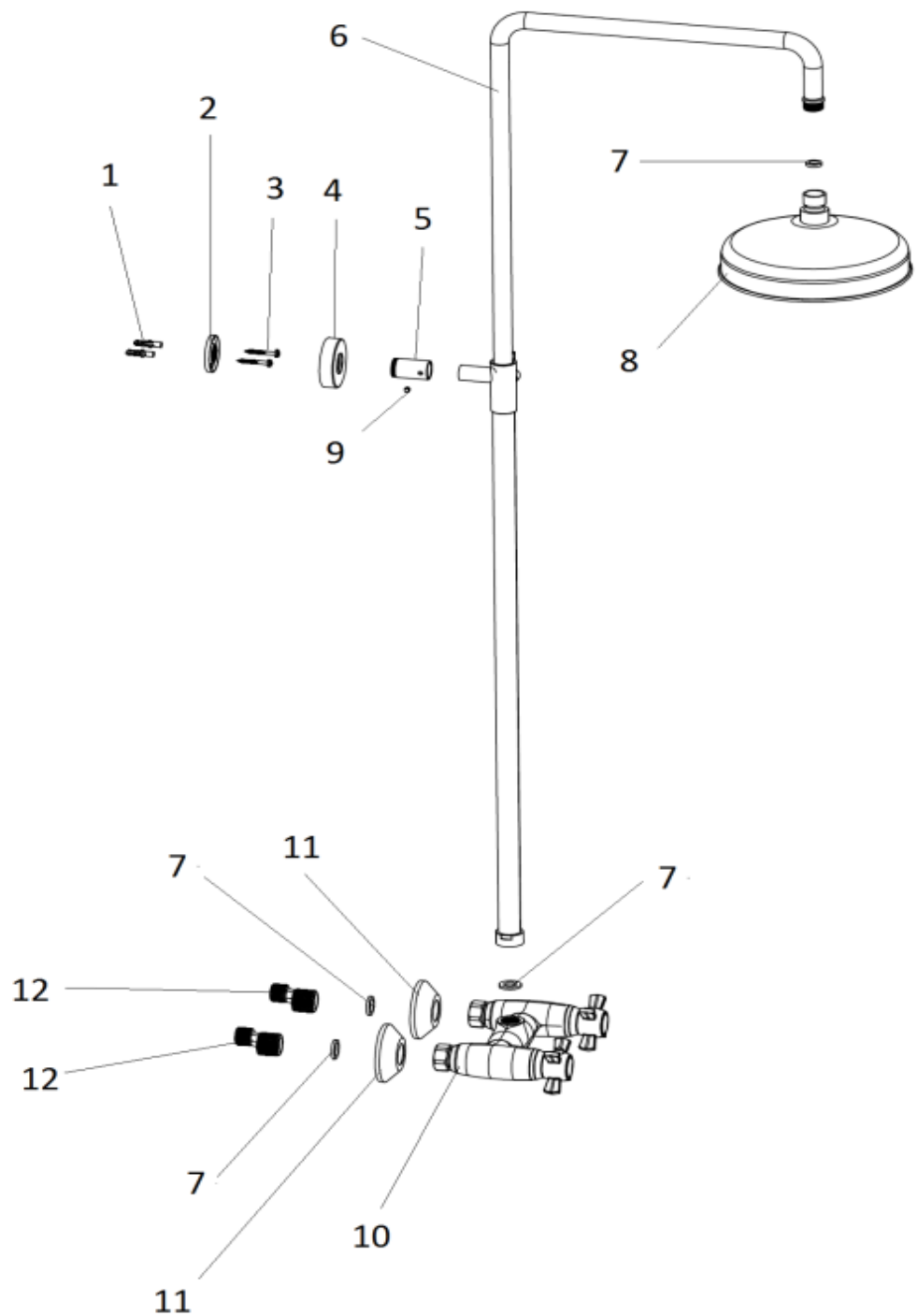


## **TRADITIONAL THERMOSTATIC SHOWER KIT (SK011)**

1. 2 \* Plastic Plugs
2. Fixing plate
3. 2 \* Screws
4. Cover Plate
5. Dowel
6. Adjustable Riser
7. O' ring washer
8. Fixed Head
9. Grub Screw
10. Thermostatic mixing valve
11. flange/cover plate
12. Cranked connectors



### **INTRODUCTION:**

Your shower kit is a thermostatic dual mixer shower which has the option of over head shower & handset shower option.

The bar shower valve is a thermostatic mixer which incorporates a thermo- regulating cartridge to assure users of consistent showering temperatures. The valve has been designed & manufactured to comply with BS EN 1287:1999 & BS EN 1111:1999, and is suitable for High pressure shower use (HP-S)

## **INSTALLATION:**

This mixer should be installed in compliance with Water Supply (Water Fittings) Regulations 1999. If further information is required, please contact your local Water Company.

This shower is suitable for use with the following systems:

- Gravity fed Hot & Cold (equal pressures) minimum working pressure 0.5 Bar (5 metre working head) to achieve this you require 5 metre between the water outlet on your tank to the shower fixed head.
- Unvented Systems.
- Gas Combination Boiler.
- Pumped System.

### Conditions of use

	High pressure	Medium pressure
Maximum Static Pressure - Bar	5	0.5
Flow Pressure, Hot & Cold - Bar	0.5 - 5	0.5 - 1
Hot Supply Temperature - degrees	55 to 65	55 to 65
Cold Supply Temperature - degrees	Equal to or less than 25	Equal to or less than 25

## **INSTALLATION GUIDE:**

1. determine the correct position and orientation for the shower valve (10) (150mm pipe centres) and screw the cranked connectors (12) into the appropriate water supplies finished with a ½ " BSP female adaptor (not supplied). The installation of the shower must be with the hot inlet on the left and the cold inlet on the right.
2. Screw the flange/cover plate (11) over the cranked connectors (12)
3. Insert O' ring washers (7) into the bar valve water inlets. Tighten nuts onto the cranked connectors (12). This shower valve is clip mounted, it needs to be connected and supported by rigid pipe work. Before connecting the mixer, water must be flushed through pipes to remove any debris.
4. Place O' ring washer (7) into the bottom of the Adjustable riser(6) and fix to the male thread which sits on top of the Thermostaitc mixing valve (10)
5. Fasten the dowel (5) to the fixed plate (2) and Determine the correct position for the fixing plate (2). Fasten to the wall using 2 \* Plastic plugs (1) and 2 \* screws (3), Then mount the chrome cover plate (4) over the wall fixing plate (2).
6. Fix adjustable riser (6) to desired position using Grub screw (9) provided.
7. Mount the fixed head (8) to the male thread which sits at the end of the Adjustable riser (6).
8. Water test.

**Customer Service Tel No: 03300 882 921**