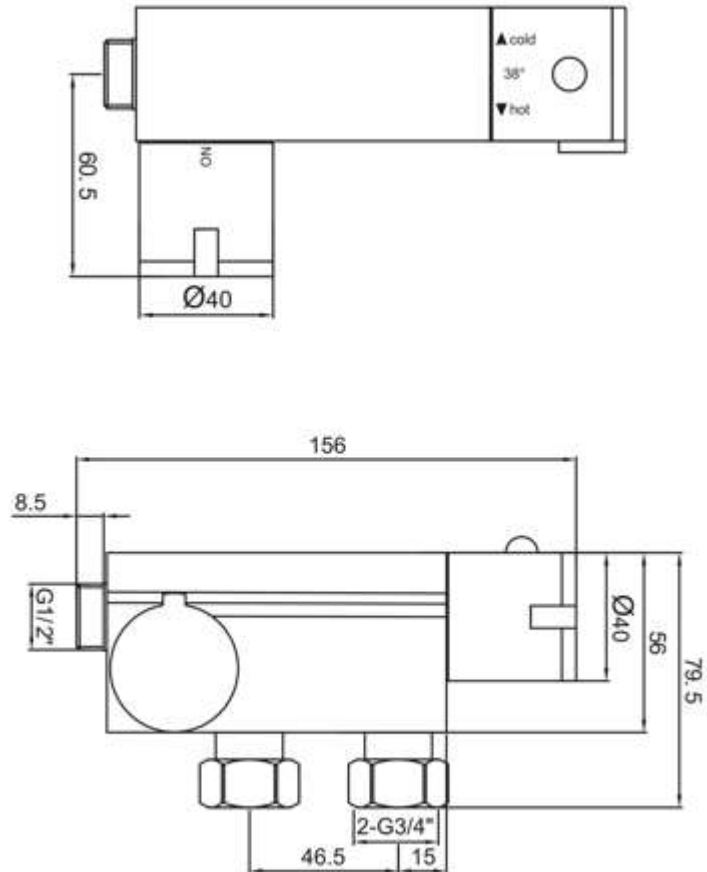


## DOUCHE003

### Thermostatic Vertical Valve for Douche



#### User Notice

1. The working condition of this product is cold water 4-29°C, hot water 55-70°C and water pressure between 0.5 bar – 5 bar
2. Ensure the shower valve is turned when not in use, the hose and gun must never be left under pressure for long periods of time. (especially when nobody resides in the property)
3. The devise must not be installed in a location in which the temperature could drop below 0°C, take all necessary measures to avoid this from occurring.
4. Don not disassemble the valve unless you are a competent person
5. Hard water can affect the function of this devise, regular maintenance would be required to prevent a build up of calcium deposits. We recommend the devise is descaled on a bi-annual basis.

#### Installation

1. This devise have a balanced hot and cold feed, to operate.
2. It is suitable for: Unvented systems, Combination boilers, pumped gravity systems (if pressure is equal)
3. Pipework must be flushed fully prior to installation, failure to do so will impair the flow of water.
4. Do not reverse the flow, doing so will prevent the mixture of water.
5. It is good practise to ensure the product can be isolated separately from the general water system, please ensure this is accessible

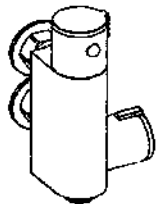
#### Maintenance

- 1) If the flow becomes reduced or in-balanced ensure the filters are clean and free of debris
- 2) Hard water areas ensure the thermostatic and on-off cartridge is removed and descaled twice a year.

#### Aftercare

To ensure no damage occurs on the surface, we recommend the use of PH neutral cleaning solution (example washing up liquid). The use of acidic cleaners will damage the finish. Use with a soft cloth. Please do not use inappropriate tools such as sharp brushes, rough sponges, scouring pads or corrosive detergents. Ensure the is then rinsed and dried with a soft dry cloth, after every use

## THERMOSTATIC MINI BAR VALVE INSTALLATION MANUAL



### IMPORTANT

1. We recommend that this product is installed by a qualified professional contractor, such as a plumber who is certified by NVQ (National Vocational Qualification) or SNVQ (Scottish National Vocational Qualification) Level 3.
2. Please check this product immediately to ensure that it has not been damaged and is complete. Before installation, please make sure this product is the correct model and you have all the parts required for installation and using.
3. All the valves should be supplied with hot and cold water at balanced pressure. If not, then the mixing function will not work correctly. It is necessary to fit non-return valves on both hot and cold feed pipes.
4. Please flush the water system to ensure that no metal swarf, solder, and other impurities can enter the valves.
5. Turn off water supply before commencing work, this should be done at the isolating valves of inlet feeds if fitted or main stopcock.
6. Please read these instructions carefully and keep it for future reference.

### WORKING PRESSURE AND TEMPERATURE

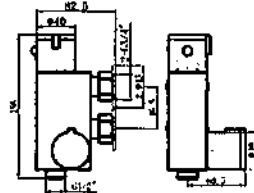
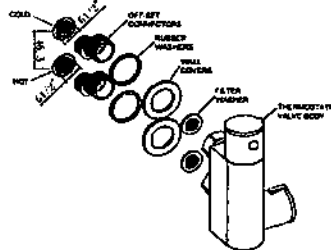
The valve is suitable for both high and low pressure installation. To ensure that the valve works well under low water pressure, the cold water storage tank must be at least 2 meters above the installed position.

Maximum Static Pressure: 10 Bar  
Flow Pressure, Hot & Cold: 0.1-5 Bar  
Hot Supply Temperature: 55-65 °C  
Cold Supply Temperature: 5-25 °C

### FITTING YOUR NEW THERMOSTATIC VALVE

Fitting your new thermostatic valve is easy when you follow these step-by-step instructions.

1. Identify all components and check the dimension drawing.

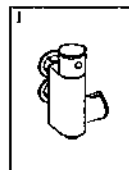


2. Prior to installation flush out pipework to remove debris.
3. Fit off-set connectors with sealant to the inlets in the wall properly.
4. Place rubber washers and wall covers on off-set connectors. Then fit filter washers and valve body to off-set connectors with sealant. Do not overtighten.
5. Turn on water supply to refill system and check for leaks. If any leaks are noticed, check that the connections are adequately tightened. Once the connections are satisfactory, you can then connect your shower kit.

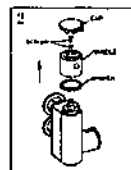
### TEMPERATURE SETTING

The temperature control handles on this product are factory set and should require no adjustment.

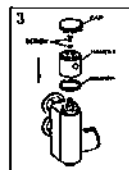
However, if for any reason the handles and/or the cartridge is removed, it is important the following procedures are followed.



- 1) Quarter-turn the handle on the right anti-clockwise, the water will come out.
- 2) Allow the water temperature to stabilize around 3 minutes and check the temperature by thermometer.
- 3) Proceed if temperature is not 38°C.



- 1) Take off the cap.
- 2) Untighten the screw.
- 3) Get out the handle and washer.



- 1) Turn on the valve.
- 2) Temperature is up when valve stem is turned clockwise, temperature is down when valve stem is turned anti-clockwise.
- 3) When temperature is correctly set, fix the handle back to the valve as show above.
- 4) Tighten the screw, adjust the handle properly, then fix the cap to the handle.

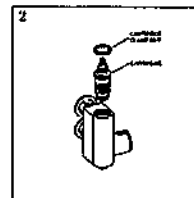
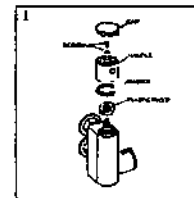
### MAINTENANCE (THERMOSTATIC CARTRIDGE)

\* After a long time usage of thermostatic valve, there will be some waste or debris from the water pipe on and around the thermostatic cartridge, which will affect the flow and sensitivity of automatical temperature adjustment. Please take out the thermostatic cartridge and clean the cartridge strainer.

\* To avoid damage, please remove all chrome parts before any maintenance takes place.

- 1) Take off the cap, unlighten the screw, to get out handle and washer. Then get out plastic block. (See Fig. 1)
- 2) Untighten the cartridge clamp nut to take out the cartridge. (See Fig. 2)
- 3) Wash the cartridge with clean running water, dry and lightly grease the seats (only use silicone grease).
- 4) Replace the cartridge and make sure it back to the primary position.

\* Cartridge Type: "H104" is the spare part number of thermostatic cartridge.



### TROUBLE SHOOTING

1. Output water temperature does not correspond with temperature set  
Cause: Thermostat has not been adjusted base on the existing home water system  
Remedy: Adjust the thermostat, refer to "Temperature Setting" procedure.  
Cause: Hot Water temperature too low.  
Remedy: Adjuster the water heater, increase hot water temperature to 65 °C.
2. Crossflow, cold water being forced into hot water pipe, or vice versa, when valve is closed  
Cause: Non-return valves dirty or leaking  
Remedy: Clean the non-return valves or exchange if necessary
3. Very low flow or no flow  
Cause: Supply pressure inadequate  
Remedy: Check hot and cold leads. If a pump has been installed, please check to see if the pump is working. (the valve will shut down if either the cold or hot water supply falls)
4. Water will not run hot enough when first installed  
Cause: Wrong maximum temperature setting  
Remedy: Adjust the maximum temperature, refer to "Temperature Setting" procedure.

### CLEANING

We do NOT recommend you use any household cleaners to clean the product, because these cleaners change substance or formula too frequently. So product should be always cleaned only with soapy water and rinsing with clean water and drying with soft cloth.