

No.	Description	Product Code	Fixings included
1	820mm Wall Hung Frame and Cistern	TR9005	YES

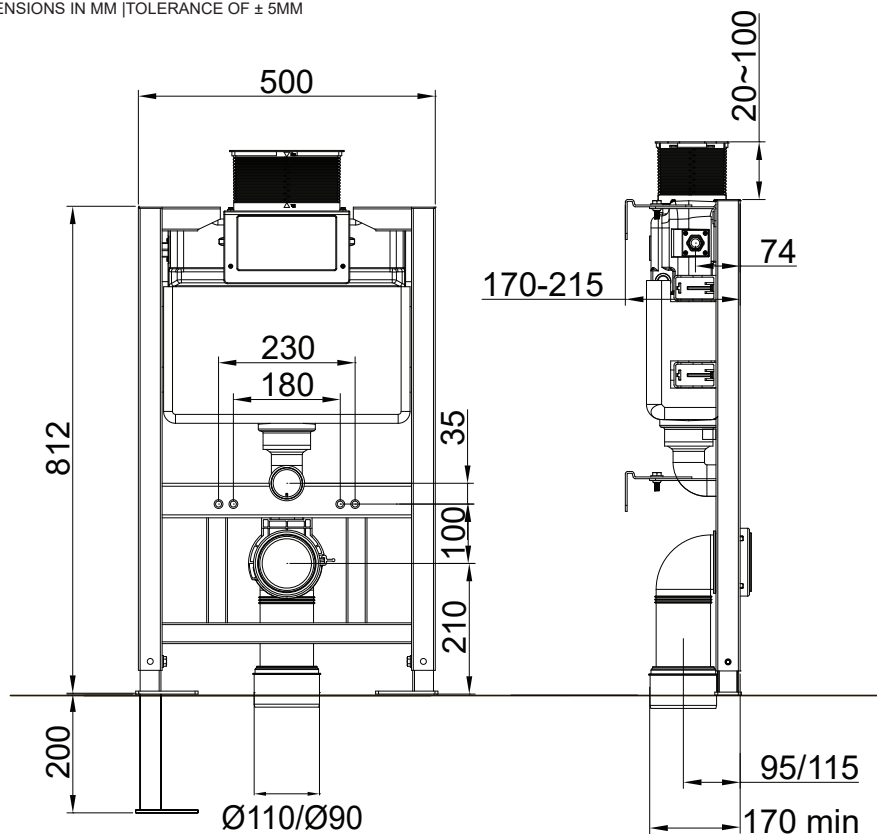


- 0.82m height
- 500mm width
- Adjustable depth: 167 – 215mm
- Adjustable height legs (200mm adjustment)
- WRAS approved 6/3L pneumatic flush valve
- WRAS approved side entry ½" (female) inlet valve
- Front access panel
- Polystyrene anti-condensation jacket
- 0.2-10.0 bar working pressure range
- Brackets, fixings and 1st fix protective covers included
- Choose from TR9004 Ellipse flush plate or TR9003 square flush button for flush operation interface
- Choose the optional Furniture Adaptor Kit (TR9007) when using the frame in furniture installations.

NOTE: THIS WALL HUNG FRAME IS SUITABLE FOR USE IN FITTED FURNITURE BACK TO WALL UNITS AND NOT MODULAR BACK TO WALL UNITS.

Dimensions:

DIAGRAMS NOT TO SCALE | ALL DIMENSIONS IN MM | TOLERANCE OF ± 5MM



FAQs

What is the flush volume of the cistern? - The cistern has a full flush of 6 litres and a half flush of 3 litres.

Is the frame supplied with a flush plate? - No, this is purchased separately - Ellipse flush plate (TR9004)

Can the flush plate be mounted on top? - Yes, this frame can be mounted on the top or front of the cistern.

Can the waste pipe be routed out to the side of the frame? - Yes, with a minimum distance of 170mm from wall to the front of the frame.

What height will my pan be? - If the frame is set at 812mm, the pan should be approximately 410mm above the floor.