



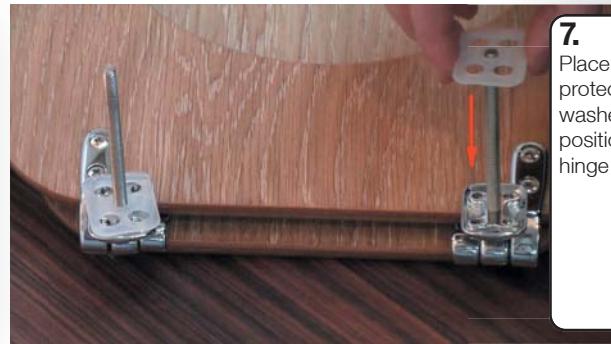
**1.** This guide is also suitable for other Tavistock toilet seats which use the 5-point fixing hinge mechanism.



**6.** When using pliers grip as close to the hinge plate as possible. As this part of the thread is redundant and won't affect the wing nut.



**2.** Measure across the centres of the fixing holes on the toilet pan.



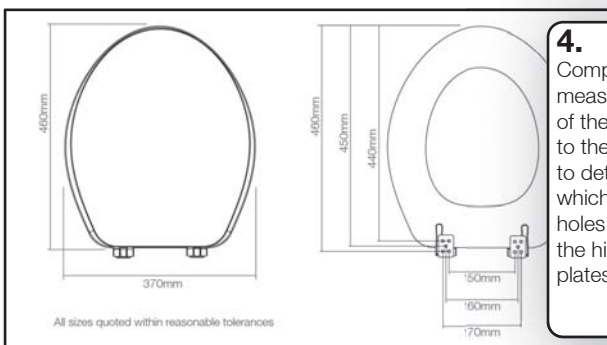
**7.** Place the protective washers into position on the hinge plates.



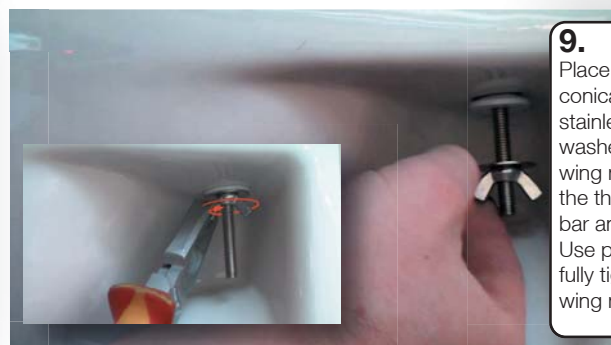
**3.** Measure from the fixing hole centres to the front lip of the toilet pan.



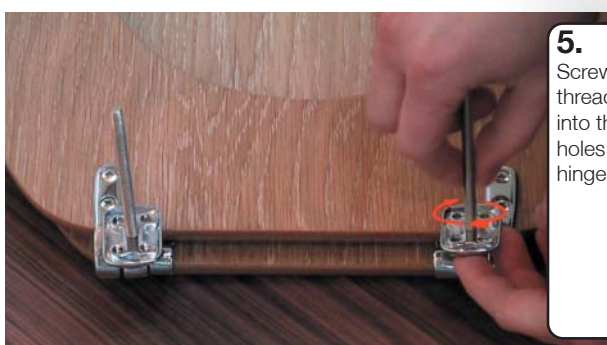
**8.** Fit the seat onto the toilet pan and align. Make sure the buffers are evenly seated on the rim of the toilet pan.



**4.** Compare the measurements of the toilet pan to the toilet seat to determine which fixing holes to use on the hinge plates.



**9.** Place the conical washer, stainless steel washer and wing nut onto the threaded bar and tighten. Use pliers to fully tighten the wing nuts.



**5.** Screw the threaded bars into the chosen holes on the hinge plates.



**10.** Grip the seat ring and attempting to swivel from left to right. If the hinge plates slip the wing nuts require tightening.