

Time & Date Setup

- With the unit on, simply hold the ⌚ button until the minutes begin to flash (5 seconds)
- Set the correct time by using the ▲ and ▼ buttons, using the ⌚ button to switch from minutes to hours and again to edit the day
- Use the ▲ and ▼ buttons to select the correct day: 1 = Monday, 7 = Sunday
- Tap the ⌚ button to complete the process

Initiate Advanced Settings

Advanced settings must be configured before programming, to initiate:

- 1 Switch off the unit by tapping the ⏻ button
- 2 Simultaneously hold the ⏻ and 📖 buttons until 1ADJ shows on the screen

Sensor Mode

Having initiated the advanced settings, tap the 📖 button to switch to Sensor Mode (zSEN) and set to OUT by using the ▲ and ▼ buttons

There are 3 sensor modes available to choose from, Air Sensor Only (IN), Floor Sensor Only (OUT) and Air Sensor with Floor Limit (ALL), you can scroll through these using the ▲ and ▼ buttons. Use the ⏻ button to switch off and save your settings.



We would recommend Floor Sensor Only (OUT) for wetrooms where the thermostat is located outside the heated area or where the heating is only required for floor warming.

Air Sensor with Floor Limit (ALL) is used where the thermostat is located within the heated room and the underfloor heating is the primary heat source.

DO NOT use Air Sensor Only (IN) with underfloor heating.

Before programming your DT-One please ensure you read through all these settings carefully.

- | | |
|----------------------------|---------------|
| ▲ Up | ⌚ Clock |
| ▼ Down | ☀️ Period 1 |
| ⏻ Power | 🏠 Period 2 |
| 👉 Manual Control Mode | 🏠+ Period 3 |
| 🕒 Programme Mode Indicator | 🏠+ Period 4 |
| 📖 Menu | 🏠+ Period 5 |
| 🔥 Heating On | 🌙 Period 6 |
| | 🔒 Screen Lock |

For technical information contact:

technical@amberufh.co.uk
0800 056 0494

Set Your Ideal Heating Programme

With 3 different options available, choose the schedule which best suits your lifestyle. Whether that is all 7 days the same (7day), 5 days and the weekend (5/2), or just 6 days and just 1 separate day (6/1).

- Having initiated the advanced settings, tap the 📖 button until you reach (6PRG) to set your programme.
- Use the ▲ and ▼ buttons to set which programme you require.
- The image above indicates a 7 day schedule. A 5/2 schedule would only show digits 1-5 & a 6/1 schedule would only show digits 1-6.
- Use the ⏻ button to switch off and save your settings.



Alternatively, you can switch off the heating schedule altogether - simply choose the option Programme off when setting.

Create The Perfect Heating Schedule

Please note down the scheduled times prior to beginning programming.

By default, your DT-One will be set to a 5/2 schedule. To personalise this schedule: Enter schedule mode by pressing the 📖 button

5 Day Schedule

- 1 You will see one of the 6 period symbols and the ⌚ symbol
- 2 Hold the 📖 button until the first period is displayed on the screen
- 3 You can then set the start time for period 1 using the ▲ and ▼ buttons
- 4 Save your start time by pressing the 📖 button, and now use the ▲ and ▼ buttons to set the desired temperature and press the 📖 button
- 5 Repeat steps for 3 & 4 to set all 6 periods

Weekend Schedule

- 1 After completing the 5 day schedule, press the 📖 button for weekend heating
- 2 The time you select will apply for both Sat and Sun
- 3 Save your start time by pressing the 📖 button, and use the ▲ and ▼ buttons to set the desired temperature
- 4 Press the 📖 button to advance to period 2
- 5 Set the desired start time and temperature
- 6 Finally, press the ⏻ button to save your 7 day heating schedule

Frost Protection

An active frost protection feature will ensure your substrate never falls below 10°C. Helping to reduce the heat up times and protecting the floor finish from potential damage.

- Having initiated the advanced settings, tap the 📖 button continuously until you see the frost protection mode (5LRP)
- Using the ▲ and ▼ buttons, simply set this to 'ON' to activate.
- Use the ⏻ button to switch off and save your settings.

Maximum Floor Temperature

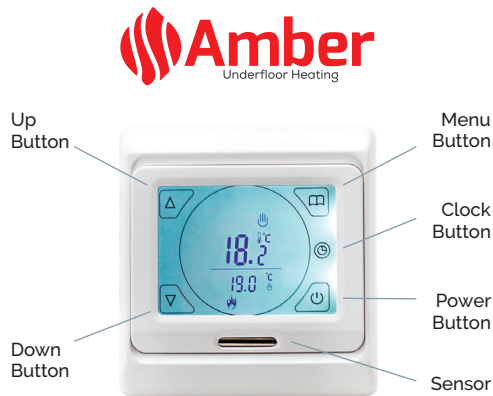
- Having initiated the advanced settings, tap the 📖 button continuously until you see the maximum floor temperature mode (3Lit).
- Use ▲ and ▼ buttons to set required temperature
- Press the ⏻ button to save

Manual Control

If required you may choose to access manual control of your DT-One. You can easily switch between the manual mode 🖱️ and your custom schedule by tapping the 📖 button

When in manual mode, you will see the manual control mode icon 🖱️, and can manually set a desired temperature for your room by using the ▲ and ▼ buttons.

The 🔥 symbol will appear when the desired temperature is set above the ambient room temperature.



DT-One
Complete Guide



Error Codes

ER0



This relates to a fault with the internal temperature sensor, either through damage or disconnection. This usually requires a replacement thermostat to correct.

ER1



This relates to a fault with the external floor sensor probe. Contact your electrician, who can isolate the electricity supply and check the sensor is connected and working correctly.

Screen Lock

In some situations where your DT-One is installed into a location where restricted access is necessary, simply:

- Press and hold the Δ and ∇ buttons until the  appears on the screen.
- To unlock, simply repeat the process until the  disappears.

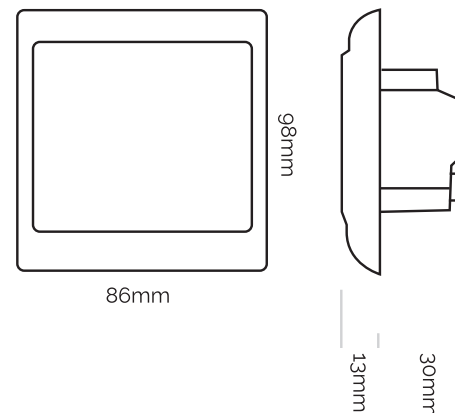
3 Simple Steps to Factory Reset

1. Having initiated the advanced settings, tap the menu  button continuously until you see AFAC
 2. Hold the Δ button until "---" is displayed on the screen
 3. Press the  button and switch off at the mains to complete factory reset
- Please note: the time displayed will not reset and will stay the same prior to factory reset.

Advanced Settings Overview

Symbol	Setting	Default	Δ or ∇
1 ADJ	Temperature calibration	N/A	Adjust measured temperature
2 SEN	Sensor mode	IN	IN: built-in sensor OUT: floor sensor ALL: both sensors (floor sensor is the limit sensor)
3 LIT	Max floor temperature	35°C	Adjust limitation value. Limitation range: 5°C-35°C
4 DIF	Switching differential	1	Adjust switching differential
5 LTP	Frost protection mode	Off	Turn on/off frost protection function
6 PRG	Heating schedule	5/2	2: 5/2 day mode 1: 6/1 day mode 0: 7 day mode
7 RLE	Output	N/A	Not Used
8 DLY	Output delay	0	Change the delay time
9 HIT	Max temperature setting	50°C	Max. Limitation temperature setpoint (50°C)
10 AFAC	Reset to factory settings	N/A	Programming parameters will be reset to factory settings when symbol "---" appears

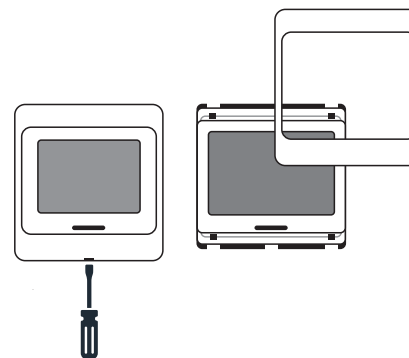
Dimensions



Installation Guide

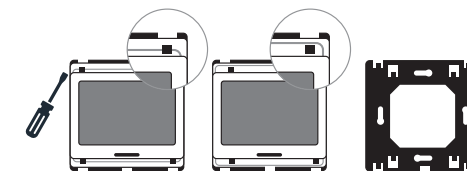
STEP 1

Release the front cover by inserting screwdriver into the hole on the underside of the front plate



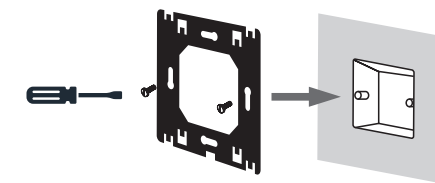
STEP 2

Take the backing plate apart according to diagram



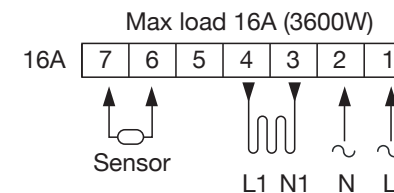
STEP 3

Install the backing plate on to the electrical connection box with screws before any wiring takes place



STEP 4

Ensure all wiring is undertaken by a qualified electrician



STEP 5

Install the housing cover and lock external frame as per diagrams

