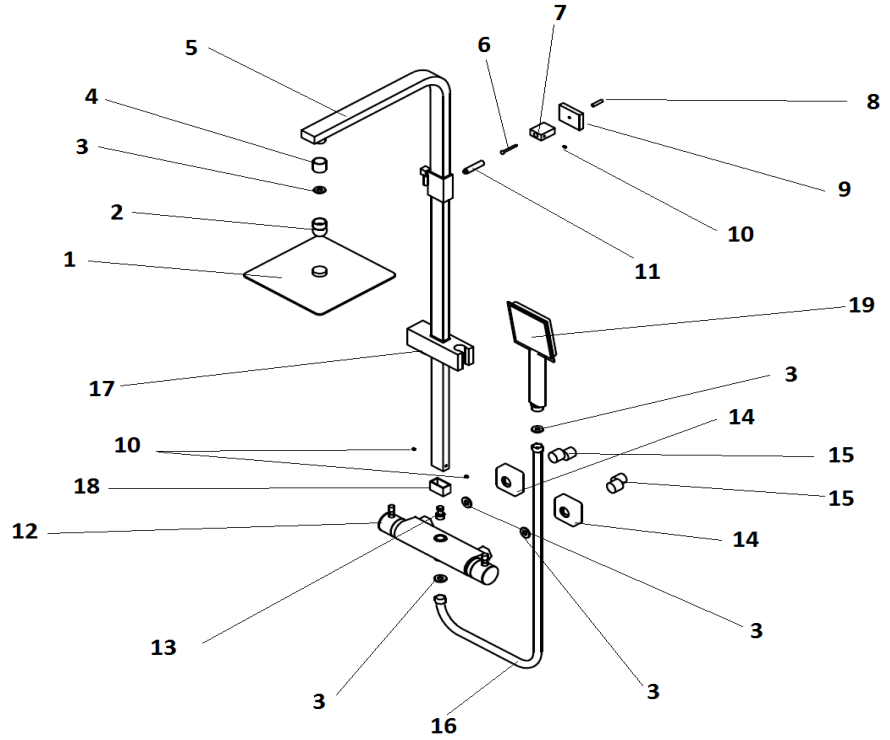


# ITALIAN THERMOSTATIC SQUARE SHOWER KIT (XA005)

1. Fixed Head
2. Swivel connector
3. 5\* Flat Rubber Washer
4. Lock Nut
5. Adjustable Riser - Min 80cm, Max 120cm
6. Screw
7. Spacing plate
8. Plug
9. Fixing plate
10. Grub screw
11. Fixing pin
12. Thermostatic Valve
13. Nipple Fixing
14. 2\* Cover Plates
15. 2 \* Offset Connectors
16. Shower hose
17. Adjustable Handset holder
18. Collar
19. Handset



## INTRODUCTION:

Your shower kit is a thermostatic dual mixer shower which has the option of over head shower & handset shower option. The bar shower valve is a thermostatic mixer which incorporates a thermo- regulating cartridge to assure users of consistent showering temperatures. The valve has been designed & manufactured to comply with BS EN 1287:1999 & BS EN 1111:1999, and is suitable for High pressure shower use (HP-S)

## INSTALLATION:

This mixer should be installed in compliance with Water Supply (Water Fittings) Regulations 1999. If further information is required, please contact your local Water Company.

This shower is suitable for use with the following systems:

- Gravity fed Hot & Cold (equal pressures) minimum working pressure 0.2 Bar (2 metre working head) to achieve this you require 2 metre between the water outlet on your tank to the shower fixed head.
- Unvented Systems.
- Gas Combination Boiler.
- Pumped System.

### Conditions of use

	High pressure	Low pressure
Maximum Static Pressure - Bar	5	5
Flow Pressure, Hot & Cold - Bar	0.5 - 5	0.2 - 5
Hot Supply Temperature - degrees	55 to 65	55 to 65
Cold Supply Temperature - degrees	Equal to or less than 25	Equal to or less than 25

## **INSTALLATION GUIDE:**

- 1: Determine the correct position and orientation for the shower valve (12) (150mm pipe centres) and screw the offset connectors (15) into the appropriate water supplies
- 2: Screw Flange/Cover plates (14) over offset connectors (15)
- 3: Insert Washers (3) into bar valve water inlets. Tighten nuts onto offset connectors (15). This Shower valve is clip mounted, it needs to be connected and supported by rigid pipe work. Before connecting the mixer, water must be flushed through the pipes to remove any debris.
4. Insert Nipple Fixing (13) into the inlet located on top of the bar valve (12) using Allan key provided.
5. Mount adjustable handset holder (17) and Collar (18) over the bottom of the Adjustable riser (5). Adjust handset holder (17) in to desired position.
6. Mount the adjustable riser rail (5) onto the nipple (13) and tighten grub screws (10) using Allan key provided. Hide grub screw fittings with Collar (18).
7. Mark the wall position for the fixing plate (9). Drill wall and place plug provided (8).
8. Screw to wall by placing screw (6) through the spacing plate (7) and fixing plate (9).
9. Screw fixing pin (11) to Adjustable riser and Adjust accordingly.
10. Fix into position using grub screw provided.
11. Mount the Lock Nut (4) over the swivel connector (2). Insert the flat rubber washer (3) into the body of the swivel connector (2). Tighten the (female side) swivel connector (2) to the male thread which sits at the end of the adjustable riser (5).
12. Mount the fixed head (1) over the swivel connector (2) and tighten with the locking nut (4).
13. Insert the flat rubber washer (3) into the nut on the end of the shower hose (16). Tighten the nut to the bottom male thread on the shower valve (12).
14. Insert the flat rubber washer (3) into the end of the shower hose nut (16). Tighten the handset (19) to the shower hose (16) nut.
15. Water Test