

9313 TRIPLE SHOWER VALVE



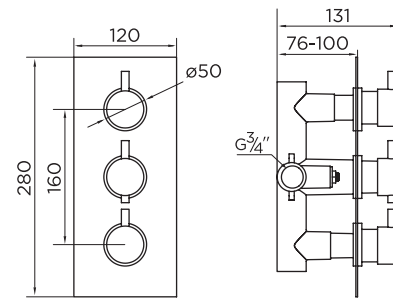
PRODUCT SPECIFICATION

Product Code: 9313
Finish: Chrome
Product Type: Concealed Shower
Construction: Body is made of brass
Cartridge Type: Thermostatic cartridge and ceramic flow cartridge
Inlet Connections: 3/4" BSP
Outlet Connections: 3/4" BSP
Fitting Dimensions: 120mm



ADDITIONAL INFORMATION

- Chromed concealing plate
- Triple Control - flow and temperature are controlled separately giving accurate control of both.
- Thermostatic cartridge maintains showering temperature to +/- 1c giving a stable outlet temperature.
- Ceramic disc flow control cartridge
- Automatic shut-off in the event of cold water supply failure, to prevent scalding.
- Temperature factory set to a 38c to eliminate the ability to select an unsafe temperature without overriding.
- Two outlet
- Modern round handles
- Lifetime guarantee



FLOW RATES (litres per minute)

0.5 Bar	1 Bar	3 Bar
7.9	12.5	19.8

WORKING PRESSURES (bar)

Min Pressure	Max Pressure	Best Performance
0.5	6	3

