

BRISTAN

Installation Instructions & User Guide

Please leave these instructions with the end user

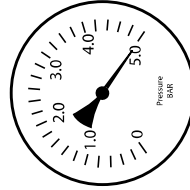
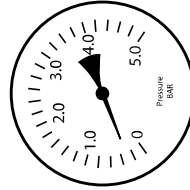
Product Code: COB SHC3STP C (D9)

Specifications

Dynamic Water Pressure

Min: 0.2 bar

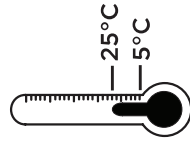
Max: 5.0 bar



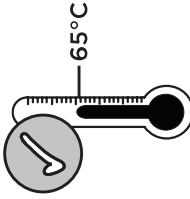
Maximum Static Pressure: 10.0 bar

Inlet Water Temperature

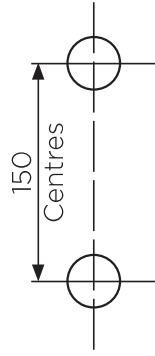
Cold Water Supply



Hot Water Supply



Inlet Dimensions



Inlet Connections

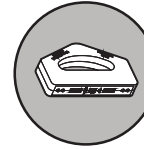
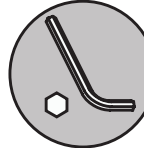
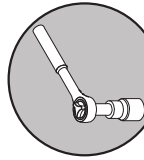


65°C Recommended
The inlet hot water must be at least 10°C above the required blend temperature.



IMPORTANT

Tools You'll Need



Socket Spanner

Flat head Screwdriver

Drill

Adjustable Spanner

Pipe Cutter

Silicon Sealant

Hexagonal Keys

Pipe & Wire Detector

Prior to Installation

All products manufactured and supplied by Bristan are safe to use provided that they are installed, operated and receive regular maintenance in accordance with these instructions.

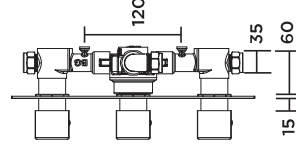
This product needs to be installed in accordance with, and meet the requirements of the Water Supply (Water Fittings) Regulations 1999 and current by-laws. For full Installation Requirements & Notes (IRN) please visit wras.co.uk/directory.

Isolation valves must be fitted to the inlet water supplies to ensure ease of future maintenance. Before installing this product the water supply must be thoroughly flushed in order to remove any swarf, solder etc. Full access must be made available for future maintenance/

Cavity Dimensions (mm)

Cavity Depth: 35mm

Concealing Plate Adjustment Range: 15mm

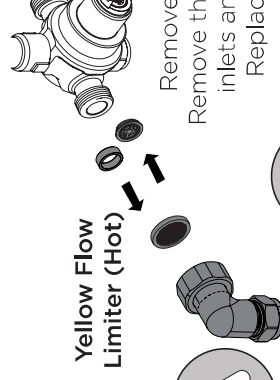


Valve Configuration

1

IMPORTANT
If installed in conjunction with boiler flow regulators **must** be fitted.

Yellow Flow Limiter (Hot)



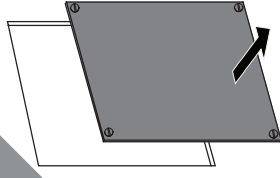
Remove the inlet and replace



Installation

1

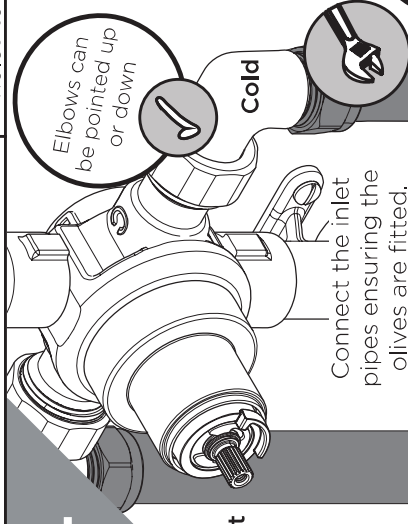
IMPORTANT
Rear access to the shower is required for maintenance and servicing



Install suitable batons (if required) onto the rear cavity. Mark the position of the valve and drill and plug holes to suit.

Prepare the pipework. Create the rear access point in the back of the wall cavity.

4



7

REI hot or cold

Pack Contents

