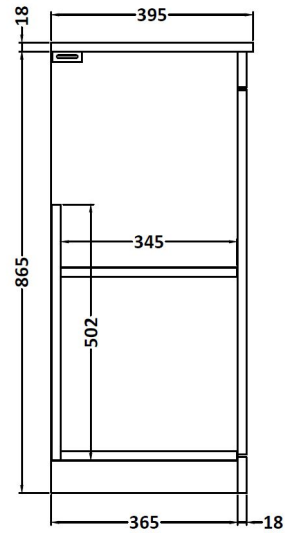
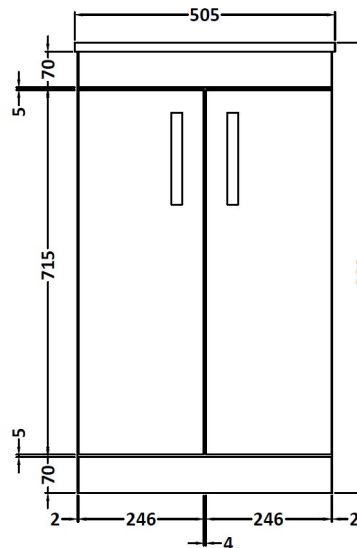


CUSTOMER DATA SHEET

SALES CODE: ATH005W

DESCRIPTION: 500 Fs 2-Door Vanity With Worktop



PACKAGING DETAILS

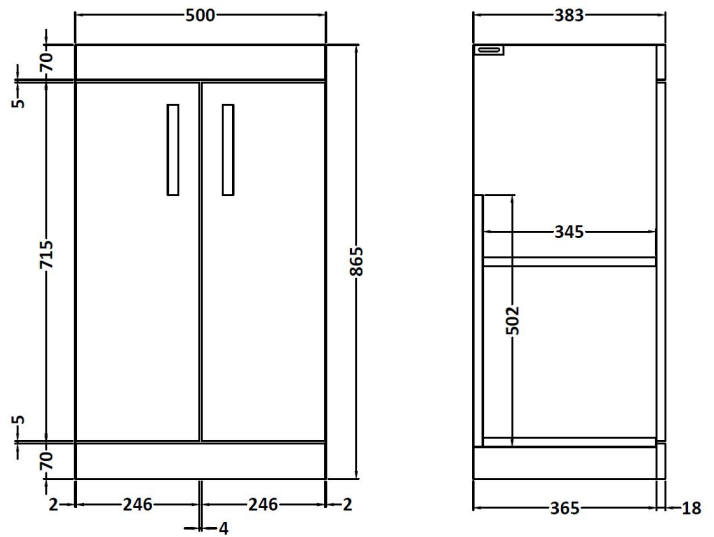
Barcode

5056211801344

CUSTOMER DATA SHEET - FURNITURE

SALES CODE: MOD602

DESCRIPTION: 500 2-Door F/S Unit



PRODUCT DIMENSIONS

Height (mm)	Width (mm)	Depth (mm)	Nett Wgt Kg
865	500	383	21

PACKAGING DIMENSIONS

Height (mm)	Width (mm)	Length (mm)	Gross Wgt Kg
900	530	410	21

PACKAGING DATA

Box Colour	Brown Cardboard Box		
Box Qty	1	Label Colour	White Label
Label Size	100 x 50	Label Qty	2

OUTER BOX DIMENSIONS (If Applicable)

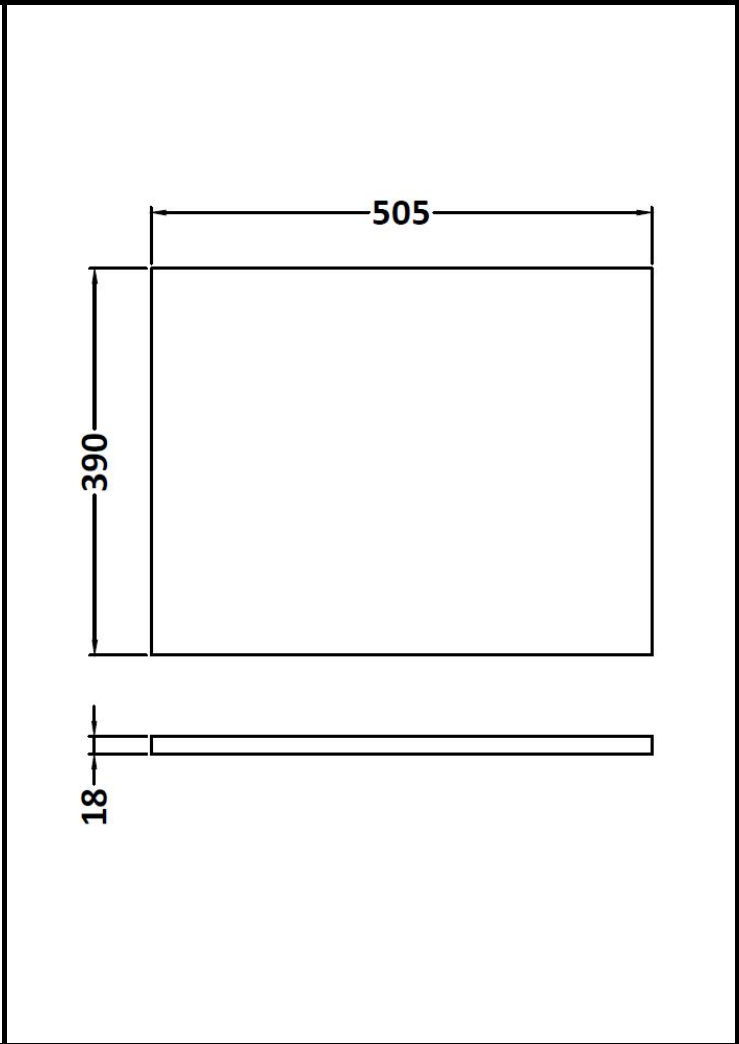
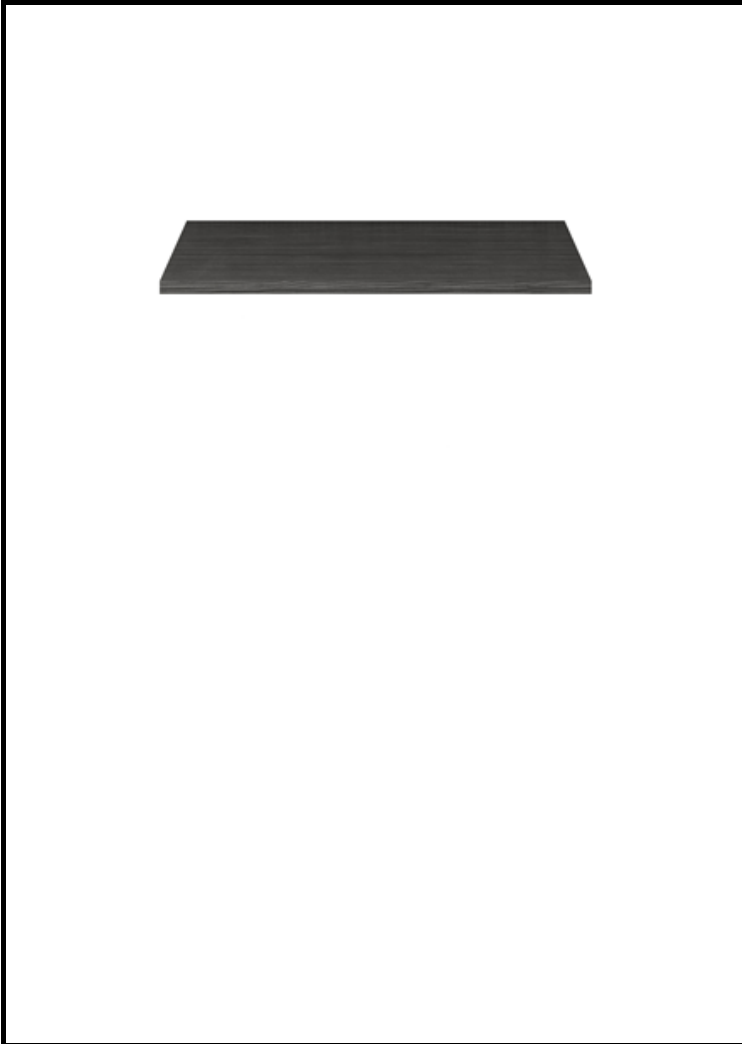
Height (mm)	Width (mm)	Depth (mm)	Gross Wgt Kg
Barcode	5055275825389		

PRODUCT DETAILS

Country of Origin	United Kingdom			
Fitting Instruction	No			
Constr' Method	Cam & Wood Dowel			
Cabinet Finish	MFC Textured Woodgrain			
Cab Thickness (mm)	18			
Drawer Included	No			
No of Shelves	1			
Hinge Inc'	Yes, Supplied			
Fixings Inc'	Yes			
Handle Inc'	Yes, Supplied			
Handle Type	Strap			
Certification	FSC	Yes	CE	N/A
Colour	Hacienda Black			
Constr' Type	Rigid			
Fascia Finish	MFC Textured Woodgrain			
Fas Thickness (mm)	18			
Drawer Type	Not Applicable			
Hinge Type	95 Degree Clip-On Soft Close			
Adjustable Legs	No, Not Required			
Handle Style	Contemporary			
Waste Shroud	No			

CUSTOMER DATA SHEET - FURNITURE

SALES CODE: MWD650	DESCRIPTION: 500 Worktop (505X390x18mm)
---------------------------	--



PRODUCT DIMENSIONS			
Height (mm)	Width (mm)	Depth (mm)	Nett Wgt Kg
18	505	390	0.55

PACKAGING DIMENSIONS			
Height (mm)	Width (mm)	Length (mm)	Gross Wgt Kg
555	555	555	0.55

PACKAGING DATA			
Box Colour	Brown Cardboard Box		
Box Qty	1	Label Colour	White Label
Label Size	50 x 100	Label Qty	2

OUTER BOX DIMENSIONS (If Applicable)			
Height (mm)	Width (mm)	Depth (mm)	Gross Wgt Kg
Barcode	5055275826287		

PRODUCT DETAILS				
Country of Origin	United Kingdom			
Fitting Instruction	No			
Constr' Method	Not Applicable			
Cabinet Finish	Not Applicable			
Cab Thickness (mm)				
Drawer Included	Not Applicable			
No of Shelves	Not Applicable			
Hinge Inc'	Not Applicable			
Fixings Inc'	Yes			
Handle Inc'	Not Applicable			
Handle Type	Not Applicable			
Certification	FSC	Yes	CE	N/A
Colour	Hacienda Black			
Constr' Type	Not Applicable			
Fascia Finish	MFC Textured Woodgrain			
Fas Thickness (mm)	18			
Drawer Type	Not Applicable			
Hinge Type	Not Applicable			
Adjustable Legs	Not Applicable			
Handle Style	Not Applicable			
Waste Shroud	Not Applicable			