

BRISTAN

TAPS & SHOWERS

Installation Instructions & User Guide

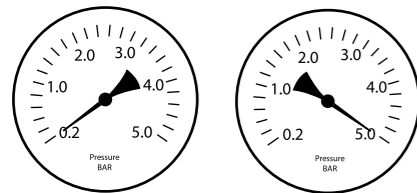
Please leave these instructions with the end user

Product code: RS2 3HBAS C (D1)

Specifications

Dynamic Water Pressure

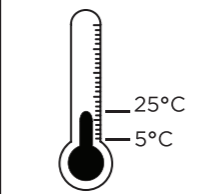
Min: 0.2 bar Max: 5.0 bar



Maximum Static Pressure: 10.0 bar

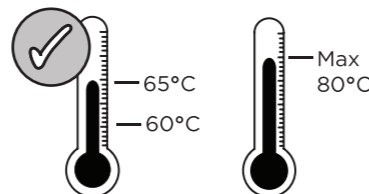
Inlet Water Temperature

Cold Water Supply



Min: 5°C Max: 25°C

Hot Water Supply



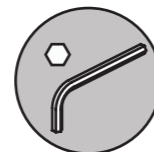
60-65°C recommended
80°C Maximum

Inlet Connections



1/2x1/2x300mm Flexible Tails

Tools You'll Need



Phillips Screwdriver Adjustable Spanner Hexagonal Keys

Prior to Installation

All products manufactured and supplied by Bristan are safe provided they are installed, used correctly and receive regular maintenance in accordance with these instructions.

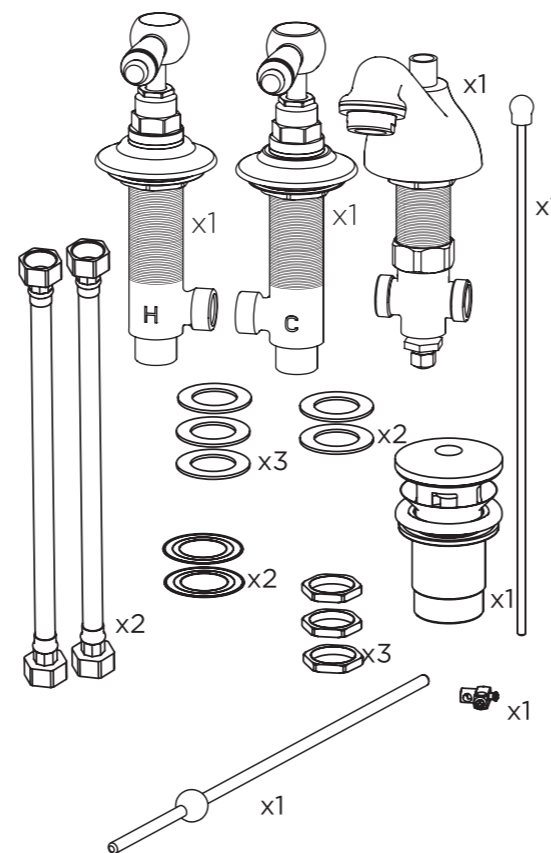
This product has been tested to the Water Regulations Advisory Scheme (WRAS) and satisfies the requirements of the Water Supply (Water Fittings) Regulations 1999 and current bylaws. For full Installation Requirements & Notes (IRN) please visit www.wras.co.uk/directory.

We recommend isolation valves to be fitted to the inlet water supplies to ensure ease of future maintenance.

Before installing these taps the water supply must be thoroughly flushed in order to remove any swarf, solder etc.

This product must not be modified in any way as this will invalidate the guarantee.

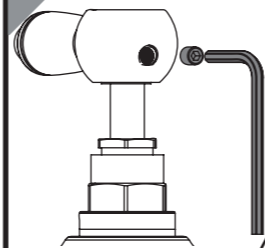
Pack Contents



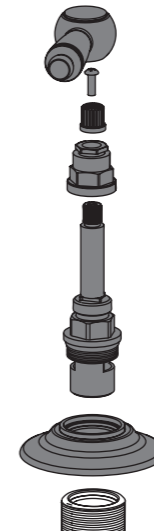
Installation

1

Remove grub screw.



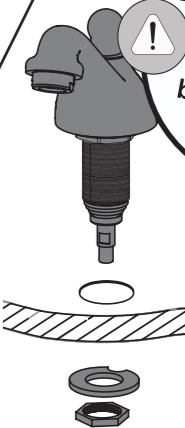
Remove handle, screw, spline adaptor, shroud, valve, and shroud plate.



2



Fit the sidebodies to and the spout to the basin.

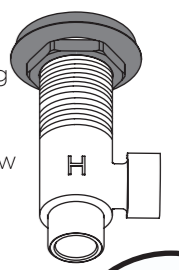


IMPORTANT
Ensure a rubber washer is between the basin and the sidebodies

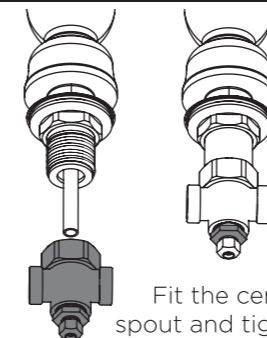
3



Secure the taps by using the washer and metal backnut below the basin.

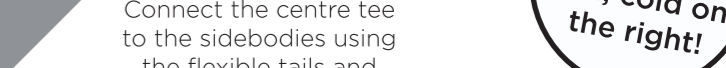


4



Fit the centre tee onto the spout and tighten the nut on the centre tee.

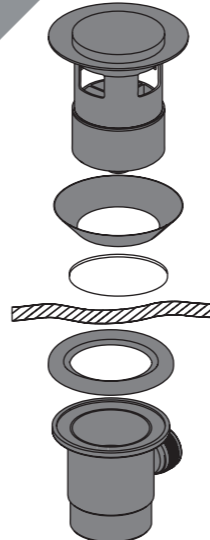
5



Connect the centre tee to the sidebodies using the flexible tails and washers.

REMEMBER
Hot on the left, cold on the right!

6



Fit the pop up waste, with the flat washer below and the shaped washer above the basin.

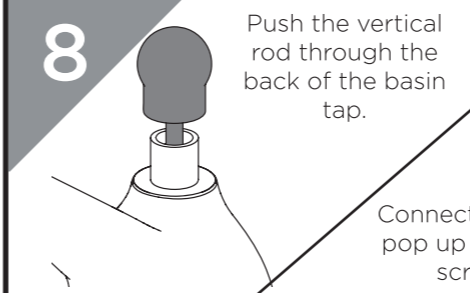
7



Place the washer and waste body plate onto the horizontal arm.

Screw the waste body plate onto the lower waste body.

8

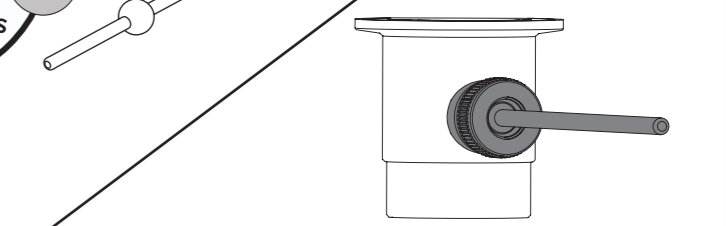


Push the vertical rod through the back of the basin tap.

Connect the rods using the pop up connector. Tighten screws to secure.

IMPORTANT
Turn on water supply for a few minutes and check all joints and connections for any leaks.

7



Spare Parts

To replace any spare parts for your tap, why not scan the QR Code or visit www.bristan.com and search for your product.

